

Serra Mesa Trails & Recreation Resource Guide

Information Compiled by Friends of Ruffin Canyon

Serra Mesa Recreation Center & Parks*

Name	Address	Hours	Facilities
Serra Mesa Park & Recreation Center	9020 Village Glen Dr 858-573-1408	Check with center	Park: playground, tot lot, softball fields, and basketball courts. Center: gymnasium, multipurpose rooms, kiln, and kitchen.
Cabrillo Heights Park	8308 Hurlbut St	6am-10pm	Baseball fields, softball fields, multipurpose field, playground, comfort station, concession stand
Murray Ridge Park	8651 Celestine	7am-10pm	Basketball courts, tennis courts, playground, large grassy area

Joint Use Parks*

Hours – Check with recreation center or school. Usually available when school isn't in session.

Name	Address	Amenities
Angier Elementary	8450 Hurlbut St	Basketball court, multipurpose fields, softball field
Cubberley Elementary	3201 Marathon Dr	Basketball courts, multipurpose fields, playground
Fletcher Elementary	7666 Bobolink Way	Basketball courts, multipurpose fields, playground, softball, tot lot
Juarez Elementary	2633 Marathon Dr	Basketball courts, multipurpose fields, playground, softball field, tot lot
Taft Middle (Summer 2022 Est Completion)	9191 Gramercy Dr	Tennis courts, basketball courts, pickleball courts, multiuse field, discovery trail, exercise stations, concrete stage and seatwall
Wegeforth Elementary	3443 Ediwhar Ave	Comfort station, multipurpose fields, softball field

*<https://www.sandiego.gov/park-and-recreation/centers/map>

Some Nearby Trails

Mission Valley River Trail – runs along north and south side of the river, can cross at Qualcomm Way and Mission Center Road. Street parking.

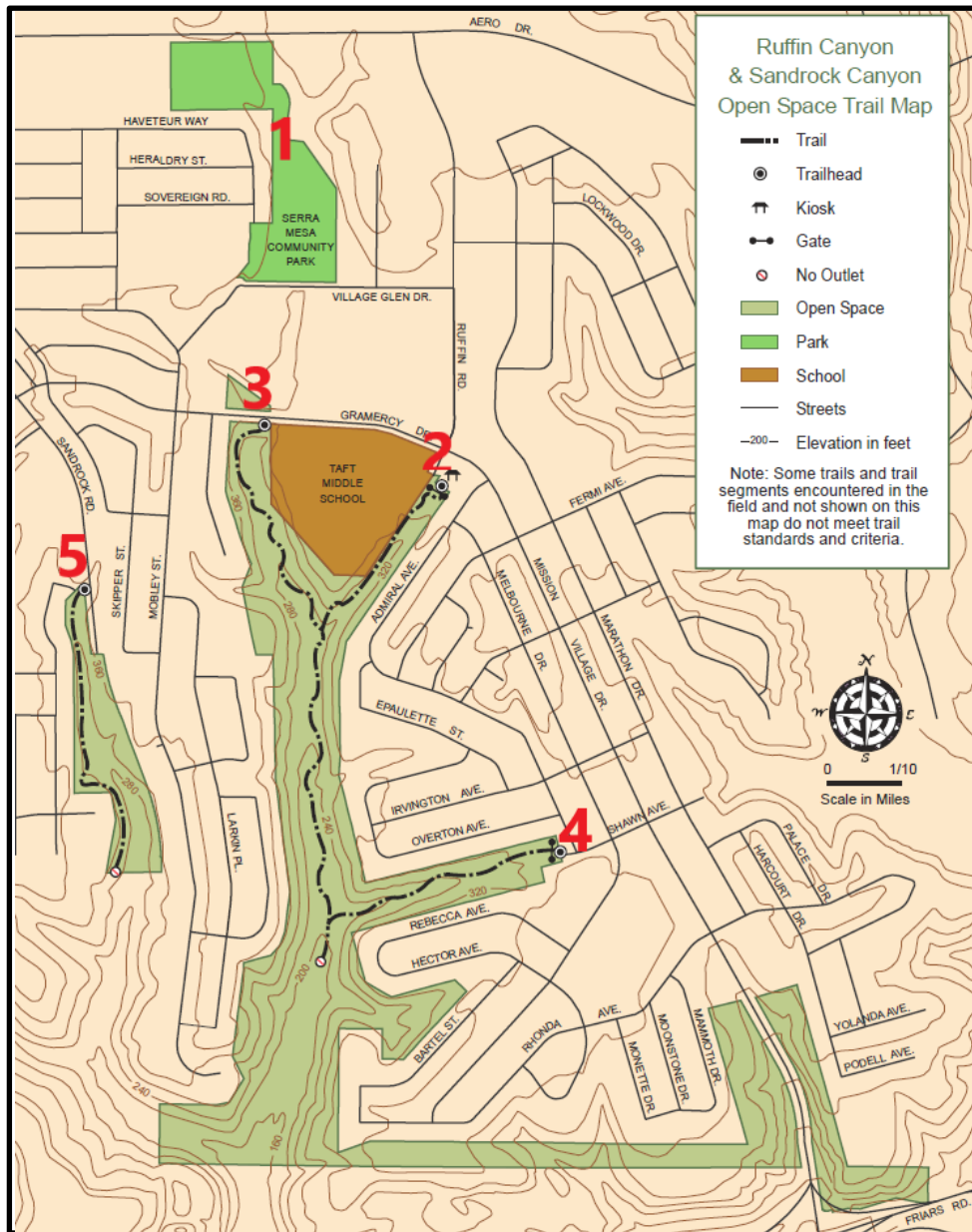
San Carlos, Mission Trails Regional Park, <https://mtrp.org/>

Tierrasanta – Mission Trails Portobelo Entrance; Shepherd Canyon, 6126 Antigua Blvd; North Rueda Canyon, Clairemont Mesa Blvd near Tierrasanta Park. Street parking.

Guided Hikes

Natural History Museum Canyoneers – Calendar of scheduled hikes at <https://www.sdnhm.org/education/canyoneer-hikes/>. Volunteer guides provide information about flora and fauna.

San Diego Hikers – Calendar at <https://www.meetup.com/sandiegodayhikers/>.



Map adapted from City of San Diego's website

Serra Mesa Trails

Name	Location	Distance (est)	Ease	Parking
1 Trail between Library and Recreation Center	Either start at path behind library or behind recreation center	.4 mi roundtrip	Easy	Library or Recreation Center
2 Native Habitat Garden	End of Ruffin Rd	<.25 mi	Easy	Street Parking
2 Ruffin Canyon (east side of Taft to Mission Valley)	End of Ruffin Rd. Path between Native Habitat Garden & Taft Middle School	2.6 mi roundtrip	Difficult	Street Parking
3 Ruffin Canyon Loop	Either start at path between Native Habitat Garden & Taft Middle School or at west end of Taft at Gramercy	1.4 mi roundtrip	Intermediate	Street Parking at Ruffin or Gramercy
4 Shawn Canyon	End of Shawn Ave	2.5 mi roundtrip	Intermediate	Street Parking
5 Sandrock Canyon Rim Sandrock to Kobe Kobe to Gowdy	End of Sandrock Rd	Roundtrip <.1 mi <1 mi	Easy Intermediate	Street Parking