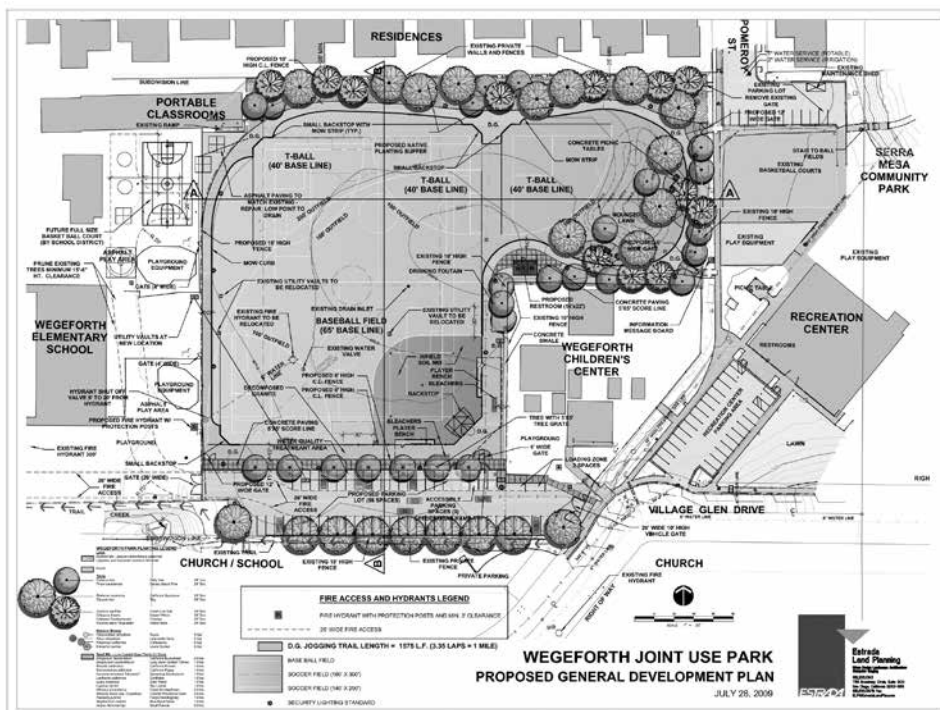


PUBLISHED BY THE SERRA MESA COMMUNITY COUNCIL

VOLUME 29, ISSUE 3 MAY / JUNE 2015



Wegeforth Elementary School Joint-use Field Ground Breaking Ceremony



www.SerraMesa.org

You are invited to participate in the

Serra Mesa Community Council

Wednesday, May 27

6:30 p.m.

*Serra Mesa - Kearny Mesa Library
Community Room, 9005 Aero Drive*

Serra Mesa Community Council

Wednesday, June 24

6:30 p.m.

*Serra Mesa - Kearny Mesa Library
Community Room, 9005 Aero Drive*

Neighborhood People
and Friendly Businesses
Living and Working Together

See page 10 for the rest of the story...

Serra Mesa Community Council Board**Officers**

| | |
|-----------------------------------|-----------------|
| Carl Demas..... | (858) 565-2473* |
| <i>President</i> | |
| Diane Romita | (858) 565-2473* |
| <i>Vice President</i> | |
| Andrea Eaton..... | (858) 565-2473* |
| <i>Treasurer/Community Events</i> | |
| Cindy McIntyre | (858) 565-2473* |
| <i>Secretary</i> | |

Board Members

| | |
|--|-----------------|
| Jackie Ander..... | (858) 565-2473* |
| <i>Friends of the Library</i> | |
| Welcome..... | (858)565-2473* |
| <i>Welcome to Serra Mesa</i> | |
| Jon Cima..... | (858)565-2473* |
| <i>SMRC</i> | |
| Gloria Espeseth..... | (858)565-2473* |
| <i>Education</i> | |
| Debbie Campbell..... | (858)565-2473* |
| <i>Community Events</i> | |
| Annemieke Frost Hutchinson..... | (858)565-2473* |
| <i>Neighborhood Watch/Community Events</i> | |
| Tom Leech..... | (858)565-2473* |
| <i>Current Issues</i> | |
| Cindy Moore..... | (858)565-2473* |
| <i>Special Projects/SMPG</i> | |

Appointed Positions

| | |
|---------------------------------|----------------|
| Myra Webb..... | (858)565-2473* |
| <i>Subscription Records</i> | |
| Ronda Adams..... | (858)565-2473* |
| <i>Observer Editor</i> | |
| Melissa Cima..... | (858)565-2473* |
| <i>Observer Staff/Education</i> | |
| Cindy McIntyre..... | (858)565-2473* |
| <i>Observer Staff</i> | |
| Marge Demas..... | (858)565-2473* |
| <i>Mailing Coordinator</i> | |
| Geralyn White..... | (858)565-2473* |
| <i>Neighborhood Awareness</i> | |
| Robin Rivera..... | (858)565-2473* |
| <i>Message Coordinator</i> | |
| Pat Brownyard..... | (858)565-2473* |
| <i>Welcome to Serra Mesa</i> | |
| Elizabeth Rice..... | (858)565-2473* |
| <i>Marketing/Media</i> | |
| Brad Beyenhof..... | (858)565-2473* |
| <i>Webmaster</i> | |

*Contact by calling (858) 565-2473 & leaving a message.

Serra Mesa Observer is published bimonthly by the Serra Mesa Community Council with a circulation of approx 800
Annual fees: Household...\$15 Sponsor...\$25 Benefactor...\$50

For subscriptions and ads, call (858) 565-2473
Council doesn't endorse ads.

Articles, Ideas, & Upcoming Events for the Observer
are welcome. Editor reserves right to edit articles.

For articles, e-mail Ronda Adams - rondakadams@msn.com

Deadline: May / June Edition...April 19th

P.O. Box 23315, San Diego, CA, 92193

<http://www.serramesa.org>

communitycouncil@serramesa.org

SERRA MESA COMMUNITY GROUPS

| | |
|--|----------------|
| Serra Mesa Community Council | (858) 565-2473 |
| e-mail: communitycouncil@serramesa.org | |
| Serra Mesa Planning Group | (858) 565-2473 |
| e-mail: smpg@serramesa.org | |

ELECTED OFFICIALS

| | |
|----------------------------------|----------------|
| Board of Education Kevin Beiser | (619) 725-5550 |
| City Councilmember Scott Sherman | (619) 236-6677 |
| Mayor Kevin Faulconer | (619) 236-6330 |
| County Supervisor Ron Roberts | (619) 531-5544 |
| State Assemblymember Toni Atkins | (619) 645-3090 |
| State Senator Marty Block | (619) 645-3133 |
| Governor Jerry Brown | (619) 525-4641 |
| U.S. Representative Susan Davis | (619) 448-5201 |
| U.S. Senator Dianne Feinstein | (619) 231-9712 |

CALENDAR OF COMING EVENTS

| | |
|---------|---|
| May 12 | Friends of Serra Mesa-Kearny Mesa Library 5:30 p.m., Serra Mesa-Kearny Mesa Library, Sudberry Room |
| May 13 | Serra Mesa Recreation Center Council Meeting 6:30 p.m., 9020 Village Glen Drive |
| May 21 | Serra Mesa Planning Group 7 p.m., Serra Mesa-Kearny Mesa Library, Community Room |
| May 25 | Friends of Ruffin Canyon 6:30 p.m., Taft Middle School, 9191 Gramercy Dr. |
| May 27 | Serra Mesa Community Council 6:30 p.m., Serra Mesa-Kearny Mesa Library, Community Rm |
| June 6 | Friends of Ruffin Canyon Cleanup 9:00 a.m., Shawn Avenue entrance to Ruffin Canyon |
| June 18 | Serra Mesa Planning Group 7 p.m., Serra Mesa-Kearny Mesa Library, Community Room |
| June 22 | Friends of Ruffin Canyon 6:30 p.m., Taft Middle School, 9191 Gramercy Dr. |
| June 24 | Serra Mesa Community Council 6:30 p.m., Serra Mesa-Kearny Mesa Library, Community Rm |
| July 4 | Friends of Ruffin Canyon Cleanup 9:00 a.m., Shawn Avenue entrance to Ruffin Canyon |

*Serra Mesa Enhancement Committee meetings -
write to P.O. Box 23315, San Diego, CA, 92193.*

In This Issue...

| | |
|--|----|
| SMCC Community Forums | 1 |
| Community Phone Numbers, Calendar | 2 |
| President's Message | 3 |
| Keeping the Chargers in San Diego..., Tire of Watching TV? | 4 |
| Free Classes SDCE, SM Rec Center | 5 |
| Serra Mesa Planning Group News | 6 |
| Important Phone Numbers | 7 |
| Serra Mesa Village, Serra Mesa Enhancement Committee | 8 |
| Take Another Look At Taft Middle School | 9 |
| Wegeforth Elementary School Joint-use Field | 10 |
| SMCC New and Renewed Members | 11 |
| Benito Juarez Elementary School, Volunteers Needed | 12 |
| Serra Mesa Sports Teams on Fire! | 13 |
| Kudos - Here's to a real Ruffin Canyon Friend | 14 |
| SMCC Subscription Application or Renewal Form | 15 |
| Free Nutrition Classes - for Seniors | 16 |
| Serra Mesa-Kearny Mesa Branch Library | 17 |
| Upcoming Summer Events | 19 |

PRESIDENT'S MESSAGE



Good News for Serra Mesa

Lots of good things going on in the neighborhood that you should know about. We have some serious people wanting to start a Farmer's Market here in Serra Mesa. You will start hearing about it through questionnaires available through Facebook or on our website. Debbie Lou and Linda Little are determined and looking at many options to enable us to have fresh fruits, vegetables, etc. Please cooperate with them as many hands make a big job smaller. You can reach Debbie at debbiewonglou@gmail.com or her phone at 619-201-2280.

We had ground breaking ceremonies at Wegeforth Elementary School for a joint use park where the community will be able to use the park when school is not in session. Read more about that in the article in this newsletter. Crime is down in Serra Mesa because of the attentive services between Eastern District Police and RSVP. Our Pantry celebrates 5 Year in May of serving Serra Mesans with package foods as well as produce provided by San Diego Food Bank, Feeding America, and our own Serra Mesa Garden. On a busy week Luisa, our pantry coordinator, as expressed we have served as many as 135 families. If you are finding that at the end of the month you have to make a decision of whether to buy prescription drugs or food, the pantry can help. They are open from 10 a.m. to 2 p.m. every Wednesday and on the 2nd Saturday of every month.

Do you know that we have a Serra Mesa Friendship lunch every Wednesday at 12:00 p.m. where fabulous soups, bread or rolls, and dessert are served. It is open to all residents of Serra Mesa. You can find friendly folks and easy conversation at Mission Village Christian Fellowship Hall at 2650 Melbourne Dr. on Even Months (June, August) or Gethsemane Lutheran Church at 2699 Melbourne Drive on odd months (May, July). Try it out as we promise a good time and no sermons.

Last of all, the Serra Mesa Village has been launched and as of April we have a board of directors and officers looking forward to providing persons 55 or older a lot of activities including social get-togethers to play cards or games. I have been told a hot Mexican Train group has been quite loud lately. They meet the 2nd and 4th Tuesday of every month from 2-4 p.m. at Gethsemane Lutheran Church Fellowship Hall at 2696 Melbourne Drive. We hear of day trips on the 1st Thursday of the month so be sure to look for e-mail blasts on those. And of course we have our General Meetings on the 3rd Thursday at the Serra Mesa Library from 3 p.m. till 5 p.m. They are forming a care committee which will provide information on transportation, source for needs of those not being handled by family members and a helping hand to those requiring it. You can contact: Serra Mesa Village at 858-565-2473 (this is an answering service so give us some time to respond); or e-mail: villageatserramesa@gmail.com; or write us at: Serra Mesa Village, P.O. Box 23315, San Diego, CA 92193. So, in conclusion, "Ask what the Village can do for you!"

Think of joining one of the many Serra Mesa Organizations as a board member or an attendee at one of our meetings. If you need to be advised by e-mail, Leave a message on 858-565-2473 with your name, e-mail address and phone in case we need to clarify your information or log onto our website at: serramesa.org and sign up there at "Sign up for Serra Mesa Meeting Notices".

Carl Demas

Keeping the Chargers in San Diego and Protecting Taxpayers

By Councilmember Scott Sherman

Last month, I released my vision and menu of financing options for a new Chargers stadium at the current Qualcomm site.

The plan was submitted to the Citizens Stadium Advisory Group (CSAG) for their review and recommendation. Recently, CSAG recommended the current Mission Valley site as the best location for a new Chargers stadium. As the representative of that area, I felt it was my responsibility to lay out a list of options and recommendations for their consideration.

For the past two months, I have held a series of town halls to hear the feedback and concerns from District 7 residents. I used much of what I learned from those town halls to form this plan.

I heard overwhelmingly that residents want to keep the Chargers in San Diego. However, many in the community still have a bad taste in their mouth from bad deals made in the past like the infamous ticket guarantee.

This is why as a part of my plan, no money from the general fund should be used for the construction of the stadium and any deal must be approved by taxpayers through a public vote.

Residents also made very clear that infrastructure and traffic improvements must be considered. As a part of my plan, I included recommendations for traffic mitigation measures such as stop light optimization, more access roads as well increased public transportation.

My plan also pushes for the revitalization of the San Diego River, creating a destination filled with walking and bike paths along a restored riverfront much like the Riverwalk in San Antonio, TX.

In an area that is in much need of park space, the plan includes the dedication of at least a 20 acre park as a part of the revitalization of the 166 acre Qualcomm site.

This is by no means a final plan. This vision and menu of financing options is meant to add to the discussion and possibly help CSAG with the important decision that they will be making soon.

Tired of Watching TV?

There are numerous educational and entertainment opportunities offered in Serra Mesa or nearby for free or at a low fee. Here's a brief list:

Serra Mesa-Kearny Mesa Library offers preschool activities, fitness classes, club meetings, Sunday Music on the Mesa, etc. The City has an easy to use website, <http://sdpl.bwcs-hosting.com/cal/main/showMain.rdo>, which allows filtering by type of activity/program, age group, location, and date.

Serra Mesa Village plans free/inexpensive activities and events for residents. For more information e-mail villageatserramesa@gmail.com or call the Serra Mesa Community Council, 858-565-2473.

Oasis offers low cost educational classes (arts, humanities, wellness, fitness, and travel) for adults ages 50 and older. The main location is at the third floor of Macy's in the Mission Valley Mall. Information is at <http://www.oasisnet.org/San-Diego-CA/About-San-Diego-OASIS> or call 619-881-6262.

San Diego Continuing Education offers a variety of low cost educational classes. The website at <http://www.sdce.edu/class-schedule> provides a filter for location, session, and type of class.

San Diego State College, College of Extended Studies, offers classes. See <https://www.ces.sdsu.edu/Pages/Engine.aspx?id=841#catalog>.

Helping San Diegans Stay Competitive in the Job Market

Free Classes

January 28-June 6



**Business, Computers
and Information
Technology**

Class schedule
available online
sdce.edu

**SAN DIEGO
CONTINUING
EDUCATION**



Serra Mesa Recreation Center

9020 Village Glen Dr.
(858) 573-1408

1:00 - 8:00 p.m. Monday, Tuesday, Thursday

1:00 - 9:00 p.m. Wednesday

2:00-6:00 p.m. Friday

10:00 a.m. - 4:00 p.m. Saturday

Closed Sunday.

Community Sports Information:

A.Y.S.O. Soccer: (858) 268-5880

N.Y.S. Soccer : (858) 973-6101

SD United Soccer: (858) 457-4625

Serra Mesa Senior Softball:

(858) 279-4283

Serra Mesa Little League: (858) 279-8361

Serra Mesa Recreation Council meets on
May 13 & July 8 at 6:30 p.m.

*Buy. Sell. Short Sales.
Investment Properties. Property Management.*



Jason LaMell - Realtor
Firerock Real Estate & Investments
619-300-5697

jason@firerockrealestate.com
www.firerockrealestate.com

CA DRE # 01861043

*Work with your neighbor who knows the neighborhood.
Jason LaMell - Serra Mesa resident*

Gethsemane Lutheran Church



Gloria Espeseth
Pastor

www.gethsemanesd.org

2696 Melbourne Drive
San Diego, CA 92123

Worship 9:30am
(858) 277-6572

Endodontics
Prosthodontics

Crowns

Cosmetics
Implants

WILLIAM E. LARSON, D.M.D.
AERO DENTISTRY

3755 Murphy Canyon Rd. #D
San Diego, CA 92123

Tel: (858) 277-2999
Fax: (858) 277-3086

STEVEN C. POSTON ELECTRICAL

Your Neighborhood Electrician

Steven C. Poston
Owner

License # 911683
State Certified
Commercial-Industrial-
Residential

(619) 204-1596
postonelectric@yahoo.com



SERRA MESA PLANNING GROUP NEWS

The Serra Mesa Planning Group (SMPG) is officially recognized by the City and makes recommendations on land use issues to the City. SMPG meets the third Thursday of the month, 7 p.m., at the Serra Mesa-Kearny Mesa Library, 9505 Aero Drive. The next meetings are May 21 and June 18. To contact us, e-mail smpg@serramesa.org.

SMPG has one board opening. Anyone who is at least 18 years old, affiliated with the community as a property owner, resident of Serra Mesa, or a local Serra Mesa business person and who has attended two of the last six SMPG is eligible to be elected. Once the SMPG revised bylaws are approved by the City Attorney's office there will be three additional openings on the SMPG board.

Summary of March 19 and April 16 Meetings

Annual Election – Bob Crider, Matt Hendry, David Dalton, and Bob McDowell were re-elected. Welcome to new board member, Mark Perry, representing the Birdland area. Our thanks to Jim Baldrice and Mark Larsen for their years of valuable service to the Serra Mesa community as SMPG board members!

Easement Vacation to vacate three separate water easements with Lot 1 of Children's Hospital - Motion passed to approve the vacation.

Bylaws Revisions Subcommittee Report - The City Council directed planning groups to revise their bylaws as a result of changes to Council Policy 600-24. The most significant revisions are in the election procedure. Motion passed to approve the changes presented by the Bylaws Subcommittee with flexibility to correct non-consequential errors. The SMPG's revised bylaws have been submitted to the City Attorney for approval.

One Paseo Referendum – Draft resolution to support opposition to One Paseo and the dangerous precedent the project presents. The outcome of the vote will be reported in the next Observer edition.

Update

Environmental Impact Report (EIR) for the Franklin Ridge Road connection between Phyllis Place and Mission Valley won't be completed until late summer/early fall. If this is an item of interest to you, you can sign up to receive e-mail notices at www.serramesa.org/. Once the draft EIR is completed, the public has 30 days to comment. The item will be scheduled for a SMPG meeting. If there is anyone who is an expert in environmental documents and willing to help with the review, please contact us at smpg@serramesa.org.

Easement Vacations – The City planner stated the following: City of San Diego has started making a concerted effort to enforce the privatization of water lines (and vacate the easements) for larger projects where the waterline is serving that property alone. A water meter will be installed at the property line and monitored by with City of San Diego. If the waterline crosses a property and serves other properties located on the other side, it will remain public.

Mission Village Drive Speed Limit – SMPG received a letter from the City's Traffic Engineer indicating that Mission Village Drive between Ronda Avenue and Gramercy Drive was surveyed for prevailing speeds. The California Speed Trap Law requires that the prevailing speeds on classified streets be surveyed every seven years in order to keep the speed limits radar enforceable. The results of the study of **Mission Village Drive between Ronda Avenue and Gramercy Drive** "indicate that the existing posted speed limit of 35 miles per hour for the southbound direction of traffic must be raised to 40 miles per hour in order to remain radar enforceable... The speed limit for northbound traffic will remain at 35 miles per hour.

Agenda Items for May 21 Meeting

Climate Action Plan (continued item from April 16 meeting) – Presentation on CAP's goals and action steps

continue to next page

IMPORTANT PHONE NUMBERS

| | | | |
|---|----------------|--|----------------|
| Abandoned Vehicles & Police Non-Emergency | (619) 531-2000 | Neighborhood Code Compliance | (619) 236-5500 |
| Airport Noise - Montgomery Airfield | (858) 573-1436 | Barking Dogs, Code Violations, Noise, Safety | |
| Animal Control | (619) 767-2675 | Police Department - Eastern Division | (858) 495-7900 |
| Bus & Trolley Schedules | (619) 233-3004 | Post Office | (800) 275-8777 |
| Canyon Cleanup | (619) 533-4411 | Poison Control Center | (800) 876-4766 |
| Child Abuse Hotline | (858) 560-2191 | Rape /Domestic Violence Hotline | (858) 272-1767 |
| City Clerk - Docket Information | (619) 533-4000 | RSVP (Retired Seniors Volunteer Patrol) | (858) 495-7990 |
| Crime - General Business | (619) 531-2000 | SDG&E Emergencies | (800) 411-7343 |
| Crime Stoppers | (619) 235-8477 | Senior Citizen Services | (619) 236-6905 |
| Dead Animal Removal (stay on the line) | (858) 694-7000 | Serra Mesa Library | (858) 573-1396 |
| Emergency Information - Earthquake | (858) 565-3490 | Serra Mesa Recreation Center | (858) 573-1408 |
| Fallen Trees | (858) 527-7500 | Sidewalk Repair | (619) 527-7500 |
| Fire Department - Non-emergency | (619) 533-4300 | Stadium Manager | (619) 641-3101 |
| Flies & Vermin | (858) 694-2888 | Stadium Security & Noise | (619) 641-3150 |
| Graffiti | (619) 525-8522 | Stolen Property/Bicycles - To Report | (619) 531-2000 |
| Hazardous Chemicals & Waste | (858) 694-7000 | Storm Drain Misuse | (619) 235-1000 |
| Health Violations | (619) 338-2222 | Street Repair - Faded signs, pavement | (619) 527-7500 |
| Kearny High Alumni Association | (619) 699-0886 | Traffic Signal Maintenance | (619) 527-8650 |
| Litter - City Owned/Private Property | (858) 492-5055 | Water Emergencies - City & Private | (619) 515-3525 |
| Meals On Wheels | (619) 260-6110 | Weeds | (619) 533-4444 |
| | | Zoning/Permits - Questions & Violations | (619) 446-5000 |

continued from page 8

which highlighted Community Choice Energy, a mechanism the City is exploring to reach its renewable energy goals. Plan is at: http://www.sandiego.gov/planning/genplan/cap/pdf/sd_cap_032515_draft.pdf.

Prioritizing Facilities Financing Projects (continued item from April 16 meeting) – The priority list located on page 12, <http://www.sandiego.gov/facilitiesfinancing/pdf/plans/smpffpfv.pdf>, is outdated (some items have been completed). SMPG's updated list will be provided to our city councilmember. If there are additional items that aren't on the facilities financing plan list, they could be considered and included on a separate list.

Ruffin Road Improvement – In February 2015 SMPG recommended Alternative 3 (consists of a parking lane, bike lane, buffer, and two travel lanes on each side of the road and a center turn lane). This alternative can't be implemented until funds are available for capital improvement projects which could take years. SMPG will consider recommending a more immediate improvement, e.g., Alternative 1 which adds sharrows or shared lane pavement marking. According to the City's description sharrows "are bicycle symbols carefully placed to guide bicyclists to the best place to ride on the road, avoid care doors and remind drivers to share the road." To view the alternatives (Ruffin Road Alt Crosssections document) and information on sharrows (Ruffin Imp Questions document) go to <http://www.serramesa.org/events/830/smpg-meeting/>.

ABLE PLUMBING AND DRAIN SERVICE

CA LIC. 681475
LIABILITY INSURED

SCOTT FIORI
PLUMBER92123@GMAIL.COM
BBB MEMBER

8431 FIRESIDE AVE
SAN DIEGO CA 92123

858 277 1153
CELL 619 985 8204

Marvin Sloben

Photographer

619.239.2828

Msloben@san.rr.com



3026 North Park Way • San Diego, CA 92104

SERRA MESA VILLAGE

We continue to grow and develop the Serra Mesa Village, a “neighborly network of seniors for seniors”. At the April meeting, the membership decided that yearly dues would be \$25 per person. We have received a generous gift that will enable us to give scholarships. So if anyone wants to be a part of the Village but lacks the \$25, come to a meeting and talk to one of the Board members.

Here is the rhythm of meetings for each month:

1. General Membership Meeting is 3rd Thursday from 3-5pm at the Library on Aero. Every month features a speaker and information about the Village.
2. The 1st Thursday of the month is a local trip. May 7 was a tour of the Central Library downtown. June 4 will be a visit to the San Diego Botanical Garden in Encinitas. Entrance fee for seniors is \$10. Carpooling will be available from the library. To RSVP and arrange for carpooling, e-mail bill.horton@gmail.com or leave a message at 858-565-2473. The July 2 outing will be to the old Police Headquarters at Seaport Village. For that one, you can bring a sack lunch to enjoy outdoors or there are many restaurants to choose from.
3. On the 2nd and 4th Tuesday of each month, there is a Drop In time for cards, games, crafts, or just conversation at the Meeting Room at Gethsemane Church, 2696 Melbourne Drive. (We’re borrowing space until we can find a Senior Center of our own.)
4. If you are interested in the leadership of the Village, the Board meets on the 1st and 3rd Monday at Gethsemane, 2696 Melbourne Drive.

Next up in the Village development is a Care Committee. Our approach will be to network with senior services in San Diego. We are applying for a grant that would help us find resources which will help us stay in our homes as long as possible. If you have an interest in this part of the Village concept, e-mail us at villageatserramesa@gmail.com or leave a message at 858-565-2473.

Serra Mesa Enhancement Committee

The City asked the Serra Mesa Enhancement Committee (SMEC) to suspend activities in December 2014 until new code enforcement training is conducted with the volunteers. Training will be scheduled sometime in May or June. If you are interested in receiving this training and becoming active with SMEC, write to P.O. Box 23315, San Diego, CA 92193 or send an e-mail to serramesaenhancementcommittee@hotmail.com.

Focus: The focus of SMEC is information, education, cooperation and assistance in the area of code compliance. SMEC sends educational letters to residents requesting voluntary compliance in the areas of excessive weeds, miscellaneous storage, lawn parking, and other violations on an as needed basis. Many people are simply not aware of the codes, whose main purpose is to help keep the community looking nice, keep peace among its neighbors, and prevent nuisances in the neighborhood. SMEC makes referrals to Code Compliance as a last resort when the resident doesn’t respond to our letters.

Composition: SMEC is composed of residents living in Serra Mesa (includes the Birdland area). SMEC volunteers are required to go to a City-sponsored training in order to be indemnified by the City. The amount of volunteer time varies with the volunteer from one hour a month to many.

Confidentiality: SMEC maintains the confidentiality of complainants, violators, and volunteers. SMEC members remain anonymous so the benefits of volunteering are intrinsic - the satisfaction of seeing improvements in the community and helping residents resolve community concerns.

Accomplishments: SMEC provides information through regular Observer columns. The efforts of SMEC have resulted in improvements in many residences in Serra Mesa and the resolution of community issues. The identity of SMEC cases is kept confidential.

TAKE ANOTHER LOOK AT TAFT MIDDLE SCHOOL

At our April SMCC Meeting, Taft Principal Joel Spengler told us what was happening at Taft. In his second year there, he offers an open door and has set aside Thursday mornings to conduct tours. Call the school at 858-496-8245 to get more information.

Among the things we learned were:

1. The student population has stabilized at 500+ and is growing slowly. With these numbers, Joel knows the name of nearly every student. About 60% of the Serra Mesa residents attend Taft.
2. Taft is scheduled for modernization through Prop S funds this fall which includes infrastructure such as wiring and bathrooms, relocating the office to the front, security fencing that protects without being oppressive, and changes to improve traffic flow.
3. The staff has been intensely studying “differentiated instruction” to meet students where they are and get them to the next level. All the teachers are GATE certified. Every class has learners at very different places, and a teacher’s ability to meet these different learners is key to the achievement of all students. A .pdf file at <http://nrichconsulting.com.s130784.gridserver.com/wp-content/uploads/2012/01/Leader-handout.pdf> is very helpful to understand this approach. All this works alongside the Common Core standards and the aim to have students develop their critical thinking skills and embrace the delight of and responsibility for their own learning.
4. Suspensions have decreased as Taft has utilized “Restorative Justice” for student conflicts. Rather than be out of school to do whatever, students take responsibility for their actions and develop a plan to restore the relationship. Mr. Spengler reported that fights and vandalism are minimal at Taft.
5. Taft has band, orchestra, Intro to Music, Spanish 1,2 and 3,4 for students. Taft students can begin the STEM path (science, technology, engineering, and math) which is carried to Kearny and, if core standards are met, comes with a guaranteed spot in Engineering at SDSU.
6. Taft is known for its Special Education services which include specialized classrooms and supports for students in regular classrooms.

It was this and more that encouraged those attending to “take another look” at this Middle school in the middle of our community.

Gloria Espeseth
Education Committee



Maggie's Cafe
A Great Place to
Enjoy Fresh,
Healthy &
Delicious Food
with Family and
Friends
Join us and get
20 % off

3232-D Grayling Dr. San Diego, CA. 92123 (858) 430-8755
www.maggiescafe2014@gmail.com

Not Valid With Any Other Offer, One per Visit, per Table



EML MEDIA

From Concept to Completion
18 years strong Serra Mesa
Video Production Company
Venue Filming*Music Video Production*Video Montages
Media/Marketing Relations
Ask for Liz: emlmedia@yahoo.com

Wegeforth Elementary School Joint-use Field Ground Breaking Ceremony

On Thursday, March 26, 2015 at 10:30 AM, the entire Wegeforth Elementary School, dignitaries from The City of San Diego, The San Diego Unified School District, and Community of Serra Mesa celebrated this groundbreaking ceremony. After many years of anticipation the day finally came when this project started. For those unfamiliar with "Joint-use Field," the facility will be open to the public after school hours each day and on weekends.

Many thanks to the hard work of all persons to bring this project to this point. Construction is estimated to be 1 year and will include many amenities not currently available at other joint-use facilities. A plan is included for your review and we invite you to thank the following persons for their hard work: George DeLaBarre and Jon Cima of the Serra Mesa Recreation Center Council; Cindy McIntyre representing the Unified School District and Serra Mesa Community Council; and Scott Sherman and Staff of the 7th District Council of San Diego.

Carl Demas, President of the Serra Mesa Community Council



Jon Cima



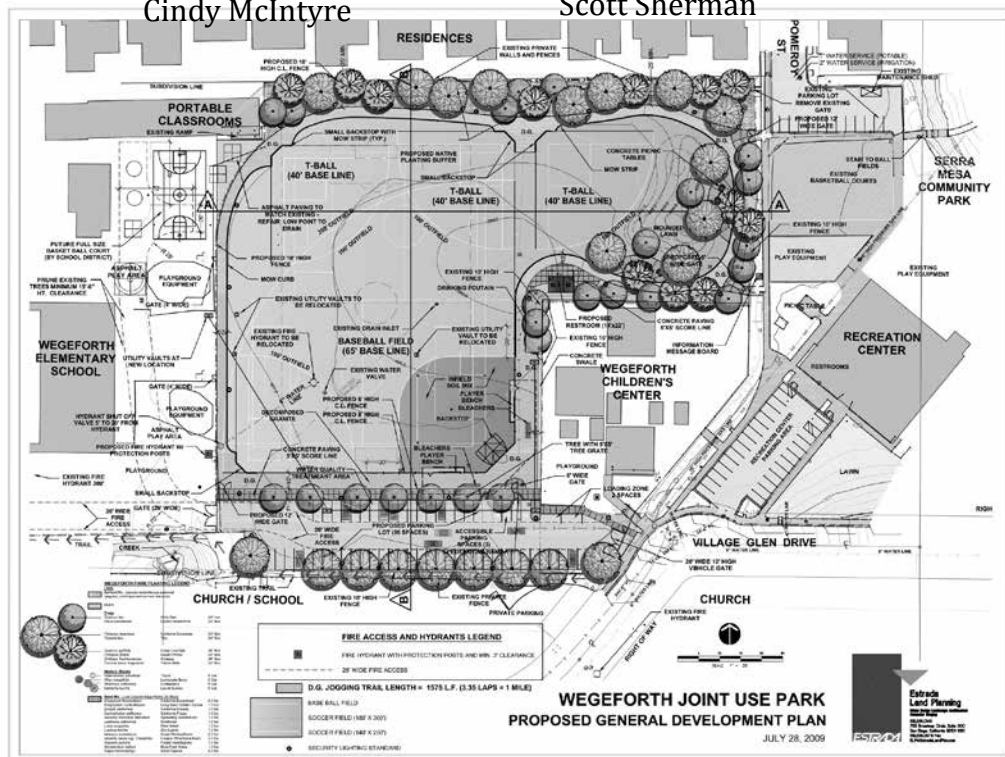
Cindy McIntyre



Scott Sherman



George DeLaBarre



***Serra Mesa Community Council Welcomes
January / February New and Renewed Subscribers***

| | | |
|----------------------------|-------------------------------|--------------------------------|
| Carlos & Evangeline Abeyta | Eileen Harrington | Michael Schaefer & Paula Simon |
| Jackie Ander | Wayne & Caroline Harris * | Gail Scott |
| Donald & Gail Bamber * | Mary Hart | Edward & Maxine Solarski |
| George & Pat Brownyard | Mary Hayward | Richard & Alice Tanner |
| William Brunnhoelzl | Robert & Sharon Horn | Harold & Velma Teel |
| Douglas Byrne * | Bill & Barbara Horton | John & Harriet Trolinger |
| Curtis Carlson | Beverly Huber | Robert & Eleanor Villandre |
| Connie Chovan * | Art & Marilyn Imdieke | Lorraine Webb |
| Jon & Melissa Cima | Dolores Janik | Myra Webb * |
| Nancy Dillon | Mark & Bernadine Johnson | Robert & Tessie Welch, Sr * |
| Desmond & Andrea Eaton * | Everett & Anne-Marie Kaukonen | Carol Windham |
| Jerry & Loyce Edwards | Bryan & Andrea Knox | |
| Lyn Elms | Janae Long & Mark Greenwald | |
| Faith Community Church | Marty & Judy Marion ** | |
| Kathy Farnum ** | Pasquale Massaro | |
| Kira Finkenberg * | Elbert McCune * | |
| Janice Fletcher | Richard Mennis * | |
| Sean Fuentes | Margaret Miller | |
| Jack & Mary Gaffney | Jamie & Raleigh Moody | |
| Diane Gage | Larry O'Dell | |
| Bill & Susan Graham * | Lillian Palmer | |
| Greyling R1, LLC * | Shawn & Mary Quinn | |
| Alex & Sally Handgis * | Wayne & Jane Riner ** | |
| Mary Ann Sanzone-Harm | Rick & Robin Rivera | |
| & Greg Harm | Dolores Salini | |

Donation: **Benefactor *Sponsor

Observer Renewal

When it is time to renew your Observer, the renewal date is highlighted and stamped, "to be renewed." Also, a postcard will be mailed and, if possible, a phone call is made to remind you. It is greatly appreciated if you pay as soon as you notice it's time to renew.

Maybe you have a special neighbor that you'd like to say "thank you" to, or maybe you have a new neighbor that you'd like to say "welcome." We highly recommend giving a subscription to the Observer (six editions/year). A post card will be sent to the recipient.

Please fill out the enclosed form and send it with your check to P.O. Box 23315,
San Diego, CA. 92193.

BENITO JUAREZ ELEMENTARY SCHOOL

Serra Mesa boasts wonderful elementary schools and one of them is the only area school that provides a bilingual program for new students. Pre enrollment has already begun for the upcoming 2015-16 school year!

The dual language (Spanish-English) program at Benito Juarez Elementary is preparing for its third year of implementation! The program is a 50-50 instructional model, whereby pupils spend one half of their day in an English setting with an English only speaking teacher (English Language Arts and Math), and the other half of the day in a Spanish setting with a Spanish only speaking teacher (Spanish Language Arts, Science, and Social Studies). Both classes also include Art, PE, and library time. Completing its second year of implementation, staff finds that students are very strong readers and writers of both languages, likely due to the amount of time in the day spent on literacy! This is a super exciting benefit of the program. We are also preparing to begin offering a fee based after school Spanish program for all students who are interested!

Did you know that the YMCA runs a full time preschool (ages 3-5) program at Juarez? We are very proud of our partnership with the YMCA Toby Wells facility, and the preschool program is top notch with a blend of academics, play based learning, and social skills development. Our non-resident pre-Ks have priority enrollment into our dual language program! For more information call (858) 496-9622.

Other special features of Juarez include:

- Allergy aware campus
- Joint Use Grass Field
- Interactive Technology in All Classrooms
- Gifted and Talented Program
- PE Teacher
- Morning Running Program
- University Tutors in All Classrooms
- Blessings in a Backpack Program (bag of supplemental groceries for kids distributed every Friday)
- Character Education with Monthly Foci
- Parent Involvement Opportunities

Visit our website at www.sandi.net/juarez, or contact the office for a tour at (858)935-2800.



Active & Available Adults, Especially Seniors, Needed at Juarez Elementary School

We need your help with a current effort to put 'eyes on the street' around Juarez Elementary School to help make the students' walk to/from school and high volume traffic times safer. Consider joining in to be part of the Volunteer Safety Patrol team. There would also be an opportunity to volunteer for 1-off events as well. This is all part of an intergenerational program (IG) Rady Children's Hospital San Diego's Safe Routes to School (SRTS) team is working on with Juarez Elementary.

Please contact Kristine Schindler (Rady's SRTS IG Coordinator) if you are interested and/or would like to receive more information - by e-mail: kschindler@rchsd.org and by phone: 858/966-1700 ext. 3557

Help us make the streets safer for Juarez students and in turn connect with this part of the Serra Mesa community, be active, be an important role model, and exercise your desire for civic engagement. Thank you for considering this opportunity to join the team.

Thanks,
Kristine



SERRA MESA SPORTS TEAMS ON FIRE!

The U12 Boys team from Kearny Mesa AYSO 780, which includes Serra Mesa, advanced to the Western States Championships for the first time in the history of Kearny Mesa AYSO. After winning the Regional Tournament at Morley Field and the Area Tournament in Garden Grove, the team played in the State Finals in Laguna Hills. The boys took 3rd place in the Western States Championships.

Congratulations Team Leon!



The U12 Boys All Stars Team (composed of some of the same players and coaches!) from Kearny Mesa AYSO 780 took 3rd place in the Section 11 Championships.

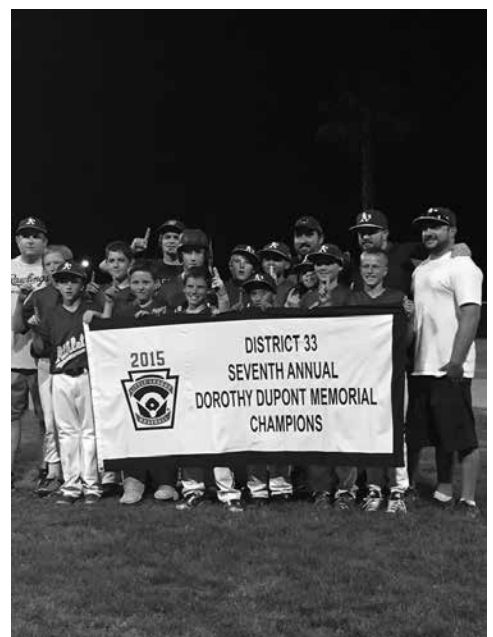
Congratulations Kearny Mesa All Stars!

Fall 2015 registration for AYSO is going on now!

Go to www.eayso.org to register. Early bird registration with discounts ends May 30th.

Not only does Serra Mesa have stellar soccer players, we also can boast of having awesome baseball players! Congratulations to Serra Mesa Little League Majors, the A's, for winning three tournaments already this season! The team won the Dorothy Dupont Tournament in Damato, Chollas Lake Cactus Tournament, and Clay Berry Tournament in San Bernardino.

Congratulations to the A's!



KUDOS – Here's to a real Ruffin Canyon Friend

In this Observer feature, we call attention to fellow Serra Mesans who are deserving of a strong “attagirl” or “attaboy.” This time our attagirl goes to Bonnie Hough, longtime leader of the Friends of Ruffin Canyon.

Maybe you don't know about Ruffin Canyon. From Mary Johnson: “Back in 1988 many of us Mission Villagers and Serra Mesans worked hard to get the support and funds needed to buy Ruffin Canyon and the hillsides on Mission Village Drive above the stadium. At that time those lands were privately owned, and with lots of hustle we were able to get that bought by the city and set aside as open space.”

Per Mary they thought the job was done. But they soon realized that more attention was needed, so in 2002 the Friends of Ruffin Canyon was formed. With strong support from the Sierra Club and Council member Donna Frye, in January 2003 the City Council voted to set aside this area as dedicated open space. The Ruffin Friends assumed the role of looking after the several connected canyons comprising 84 acres.

Mary Johnson: “Bonnie Hough has been the reason we have had the Friends of Ruffin Canyon. It has been her superior leadership and her dedication and passion for the environment that has kept the Friends an active successful community organization. Under her guidance, the Friends partnered with Taft Middle School, wrote grants, and in 2005 formed the Taft Service Club that created the adjacent Natural Habitat Garden.” The Garden has many native plants, foot trails and a wooden footbridge to aid the care-taking process. The Friends work with many volunteers on monthly clean-ups, nature rejuvenations, and trail improvements at Ruffin Rd. and Shawn Ave. open spaces, plus the trail to the library from the SM Rec Center.

Bonnie Hough is a long-time Serra Mesan, activist for various causes and a retired physician. Ruffin Friends member Monica Fuentes: “I first met Bonnie way back when she came to my door campaigning for a local candidate. She has literally changed our local landscape with her leadership and native plant promotions. It was her idea to develop the native Butterfly Garden at Taft.”

From Jason Allen, Sr. Park Ranger, City of San Diego: “Bonnie has been a great help at Ruffin Canyon. She loves the canyon and is very knowledgeable about the flora and fauna. She taught me a lot when I first started 10 years ago and has been a valuable resource. She has done great things with the after-school kids groups and has created or enhanced a passion for nature in many of the kids.”

So how about an “attagirl” drum roll and cheer. “Thank you Bonnie,” says Mary Johnson, “for making Serra Mesa a better place to live.”



Tom Leech is a member of the SM Community Council Board and author, with Jack Farnan, of *Outdoors San Diego: Hiking, Biking & Camping*. Visit his website at www.outdoorssandiego.com. (And who's your candidate for our next Serra Mesa Kudo? Send info to Tom at outdoorssd@aol.com.)

SMCC Subscription Application or Renewal Form & Interest/Volunteer Survey

If you are interested in being contacted about any of the organizations listed below and/or you wish to receive a bi-monthly newsletter **or renew** your subscription, please fill out the following information. Return this form to the Serra Mesa Community Council, PO Box 23315, San Diego, CA 92193.

Last Name _____ First _____ E-mail _____
 Address _____ City _____ State _____ Zip Code _____
 Home Phone _____ Work Phone _____ Occupation _____

Subscription Form - Enclosed is my check payable to the Serra Mesa Community Council to subscribe at the following level:

Household (\$15) ____ Sponsor (\$25) ____ Benefactor (\$50) ____

How did you hear about us? _____

| Need More Information | Want to Volunteer | Brief Description of Serra Mesa Organizations |
|--------------------------|--------------------------|--|
| <input type="checkbox"/> | <input type="checkbox"/> | Community Council. Sponsors clean-ups, publishes newsletter, liaison between elected officials & the community, meets 10 times/yr. Volunteers needed: Board & special projects. Commitment: varies. |
| <input type="checkbox"/> | <input type="checkbox"/> | Planning Group. Advises the City on the Serra Mesa Community Plan and land use issues. Volunteers needed. Trained & indemnified by the City. Commitment: 3.5 hours/month. |
| <input type="checkbox"/> | <input type="checkbox"/> | Recreation Council. Plans, promote, publicizes & helps provide recreation opportunities for citizens in Serra Mesa. Volunteers needed: Council. No training needed. Commitment: 1.5 hour/month |
| <input type="checkbox"/> | <input type="checkbox"/> | Enhancement Committee. Sends educational letters to residents requesting code compliance. Promotes community improvement. Trained & indemnified by the City. Commitment: 3 hours/month. |
| <input type="checkbox"/> | <input type="checkbox"/> | Friends of the Library. Provides summer reading program, extra books & tapes, & sponsors special library events for the Serra Mesa Library. Volunteers needed: Board. Commitment: 5 hours/month. |
| <input type="checkbox"/> | <input type="checkbox"/> | Friends of Ruffin Canyon. Friends of Ruffin Canyon removes invasive non native plants from the canyon and replaces them with natives. |
| <input type="checkbox"/> | <input type="checkbox"/> | Serra Mesa Food Pantry. Staff the Food Pantry, pick up donated food, coordinate food drives, organize community sponsors. Commitment: varies. |

To volunteer for one of the groups listed below call 858-565-2473.

Churches. Volunteer needs, training, & commitment varies with each church.

Education & PTAs. Volunteers needed: school based parent groups, readers/listeners in the schools, & various projects at schools. Training & commitment varies with activity.

Sports (Soccer, Baseball, Basketball). Volunteers needed: referees, managers, coaches, scorekeepers, etc. Training & commitment varies with activity.

Youth Activities (Girls Scouts, Boy Scouts, etc.). Volunteers needed: leaders, sponsors, & volunteers for special activities. Training provided. Commitment varies.

Views concerning the present and future Serra Mesa. Please attach a sheet with issues, suggested goals, and suggestions.

Skills/Experience/Interests. Sometimes an organization needs specialized help. If you wish to volunteer, then please attach a sheet with a list of your skills/experiences.



Free Nutrition Classes for Seniors

Join the Jacobs & Cushman San Diego Food Bank for a fun-filled, six-week course tailored to senior fitness, health, and nutrition!

What you will learn:

- How to make simple, healthy meals & snacks that also taste great
- How to eat healthy on a budget
- Simple ways to exercise in the comfort of your own home
- Tips on how to incorporate more fruits & vegetables into your diet



Receive free recipe cards and bags of fresh produce!

Sign Up! It is FREE!

To Register: Please sign-up by one of the following options:

- Call Jenna Olson: 1-866-350-3663 x97
- Call Serra Mesa Food Pantry: 858-278-2633 x 13
- Call Serra Mesa Village: 858-565-2473

Dates: 6 Wednesdays, June 17th-July 22nd

Time: 10:30am-11:30am

**Location: Mission Village Christian Fellowship
(2650 Melbourne Dr. San Diego, CA 92123)
Across from Jaurez Elementary**

Eat Healthy, Be Active!

www.SanDiegoFoodBank.org

Questions about the class? Please Call: Jenna Olson at 1-866-350-3663 Ext. 97

SERRA MESA-KEARNY MESA BRANCH LIBRARY

May/June, 2015 Events/Programs

Adult Programs

Art Exhibits – The Friends of the Serra Mesa-Kearny Mesa Branch Library present a Kearny High School Alumni Exhibit in the display cases.

Zumba® Dance/Toning Fitness – Mondays & Thursdays, 1:00 p.m. The Zumba® Fitness program fuses Latin rhythms with easy-to-follow moves. Monday's class includes a half hour of Zumba Dance and a half hour of toning.

Zumba® Gold Fitness – Wednesdays, 1:30 p.m. The Zumba® Gold Fitness program fuses Latin rhythms with easy-to-follow moves. This class is designed for beginners and active seniors.

May 2, 2:00 p.m. Hellenic Cultural Society Lecture: Retirement and Old Age in Byzantium. Join the Hellenic Cultural Society for a lecture on retirement starting in the first century BCE.

May 4 & 18, 10:00 a.m. Diabetes Wellness. Coaching for people with diabetes, their family and friends presented by Mary Hyde, CHHC. For more information contact 858-750-3112 or maryhyde@we-are-well.com.

May 8, 1:00 p.m. Your Personal Commercial. This workshop by the San Diego Metro Career Center teaches you how to communicate your value to employers effectively and professionally.

May 12, 5:00 p.m. Friends of the Library Meeting. Join members of your community to discuss ways to support the library.

May 12, 6:45 p.m. Serra Mesa Library Book Club. Join members of your community to discuss *The Namesake* by Jhumpa Lahiri.

May 17, 2:00 p.m. Music on the Mesa: Maja Markovic Ensemble. Come and enjoy a FREE concert by the local operatic group, the Maja Markovic Ensemble.

May 19, 6:30 p.m. Mesa College Guitar Ensemble Concert. Come and enjoy a FREE concert by the local guitar group, the Mesa College Guitar Ensemble.

May 21, 3:00 p.m. Serra Mesa Village Meeting. Join members of your community for presentations on healthy lifestyles for older adults.

May 24, 1:30 p.m. San Diego Folk Song Society. Join the folk song circle and enjoy free, live music.

May 27, 6:30 p.m. Serra Mesa Community Council. A meeting to provide information and act as a forum for identifying and solving community problems.

June 1 & 15, 10:00 a.m. Diabetes Wellness. Coaching for people with diabetes, their family and friends presented by Mary Hyde, CHHC. For more information contact 858-750-3112 or maryhyde@we-are-well.com.

June 9, 6:45 p.m. Serra Mesa Library Book Club. Join members of your community to discuss *The Boys in the Boat* by Daniel James Brown.

June 12, 1:00 p.m. What to Say at Job Interviews. This workshop by the San Diego Metro Career Center teaches you how to prepare and communicate your value in a job interview.

June 18, 3:00 p.m. Serra Mesa Village Meeting. Join members of your community for presentations on healthy lifestyles for older adults.

SERRA MESA-KEARNY MESA BRANCH LIBRARY

June 21, 2:00 p.m. Music on the Mesa: The Swamp Critters. Come and enjoy a FREE concert of Cajun and Zydeco music by the Swamp Critters.

June 24, 6:30 p.m. Serra Mesa Community Council. A meeting to provide information and act as a forum for identifying and solving community problems.

June 26, 1:00 p.m. Career Assessment Tools. Learn how to assess your best skills and value in this workshop offered by the San Diego Metro Career Center.

June 28, 1:30 p.m. San Diego Folk Song Society. Join the folk song circle and enjoy free, live music.

Children Programs

Kids Night with Hopscotch Tiny Tots – Tuesdays, 4:30 p.m. Join Miss Kim for music, stories, arts and crafts in a program which is ideal for toddlers and pre-schoolers.

Preschool Storytime – Fridays, 10:00 a.m. Join Grandma Patti for our very popular story time, which is perfect for pre-schoolers and their families.

Chess Club – Fridays, 4:00 p.m. Join instructors from the Lone Kings Chess Club and learn game tactics and strategies.

May 4 & 18, 10:30 a.m. Yoga Storytime for Kids. Toddlers will hear stories and songs while learning yoga poses.

May 6 & 20, 4:00 p.m. Lego Builder Club. Join us to build Lego creations that will be displayed in the library.

May 11, 10:30 a.m. Preschool Craft. Join us for a fun, easy-to-make children's craft.

May 14, 21 & 28, 10:00 a.m. Music Time for Kids with Cowboy Bob. Come dance with Cowboy Bob as he introduces music and instruments in a show appropriate for all ages.

May 23, 2:30 p.m. Chess Club Tournament. Kids and Teens are welcome to put their chess skills to the test in a friendly tournament sponsored by the Lone Kings Chess Club.

June 1 & 15, 10:30 a.m. Yoga Storytime for Kids. Toddlers will hear stories and songs while learning yoga poses.

June 3 & 17, 4:00 p.m. Lego Builder Club. Join us to build Lego creations that will be displayed in the library.

June 8, 22 & 29, 10:30 a.m. Preschool Craft. Join us for a fun, easy-to-make children's craft.

June 11, 18 & 25, 10:00 a.m. Music Time for Kids with Cowboy Bob. Come dance with Cowboy Bob as he introduces music and instruments in a show appropriate for all ages.

June 17, 4:00 p.m. Summer Reading Program: Pacific Animal Productions Show. Join us for a fun program showing off animals!

June 24, 4:00 p.m. Summer Reading Program: Hullabaloo Music Show. Join us for a fun program filled with music and laughter!

SERRA MESA-KEARNY MESA BRANCH LIBRARY

Apply for a Free Computer!! Computers 2 SD Kids at the Serra Mesa-Kearny Mesa Library – Classes on May 16 and June 27

The San Diego Public Library and Computers 2 SD Kids are teaming up to provide computers for families with children. Sign-up at the Serra Mesa-Kearny Mesa Branch Library starting on the 1st of each month. Volunteers will guide you through an introductory computer class at the library. Attendance at this class is required before you can receive a computer. Computers 2 SD Kids will give you a Technology Assistance Program application. They will review it and notify you whether you qualify based on your verified income.

Do Your Homework @ the Library!!

Come and Do Your Homework at the Serra Mesa Library. At our homework center, students in grades K through 8 can get in-person homework help from our homework coaches. Mondays and Thursdays 3:30-5:30, Tuesday and Wednesday 3:30-7:00, Saturdays 11:00-2:00.

Summer Reading Program 2015!! June 15 to August 15

Read to the Rhythm and join the Summer Reading Program! It's free to sign up at www.sandiegolibrary.org beginning on June 15th. Keep track of the books you read this summer with your online reading log and earn prizes for reading! Every Wednesday from June 17th through August 19th at 4:00 p.m., join us for a special Summer Reading Shows featuring clowns, magicians, animals, and more!

UPCOMING SUMMER EVENTS

As the weather warms (did it ever cool?!), we are starting to plan for some fun family events at our local park this summer. **SAVE THE DATES!** All events will be at Cabrillo Heights Park.

- **Friday June 26th** Movie Night – Alexander and the Terrible, Horrible, No Good, Very Bad Day – starts at dusk (around 8pm), food truck and ice cream truck available
- **Saturday August 1st** Concert in the Park with the Siers Bros from 2pm – 5pm – picnic with your neighbors!
- **Saturday September 19th** Movie Night – Big Hero 6 – starts at dusk (around 7pm), food truck and ice cream truck available

As we have in the past, we will collect non-perishable food for our own Serra Mesa Food Pantry. Bins will be at each event for your donation. The Serra Mesa Food Pantry is a tremendous resource providing food to individuals and/or families who live in the Serra Mesa area and who are experiencing temporary struggles in obtaining basic necessities during illness, unemployment, or other crisis. Their goal is to lessen the impact of hunger in our community. Thanks for your support!

Sponsorships are needed to help defray our costs! Please contact Serra Mesa Community Council if you or your company can help, communitycouncil@serramesa.org or 858-565-2473. Sponsors from previous years include the Chargers, Home Instead Home Care, Rawknyks barbershop, Crunch Fitness, Alliant Residential, Dr. Joe Sparrow, and Greyling Dental.

We look forward to spending time with our neighbors and reconnecting with our community. Join us!



Serra Mesa Community Council and
Serra Mesa Rec Council Present...

www.serramesa.org

FREE!

Movie Night!

Food Truck at 5pm

Movie at Dusk

**At Cabrillo
Heights Park
8308 Hurlbut St
Serra Mesa**

Disney
ALEXANDER
AND THE
TERRIBLE, HORRIBLE, NO GOOD,
VERY BAD DAY

**Friday
June 26**

Food drive!

Bring non-perishable food to
donate to the Serra Mesa Food
Pantry!



AYSO REGION 780

FALL 2015 REGISTRATION

BOYS AND GIRLS AGES 4-18 (must be 4 by July 31, 2015)

ALL PLAYERS MUST PRE-REGISTER AT www.eayso.org PRIOR TO REGISTRATION.

You must bring **2 printed copies of your completed registration form for each player, including the concussion form.** Registering online DOES NOT preclude you from having to attend one of the following registration days to finalize your registration!

PLEASE NOTE THAT NEW PLAYERS WILL BE REQUIRED TO PROVIDE PROOF OF BIRTH DATE.

Early Bird Registration: Pay Early and Save!

Saturday, April 18th & April 25th 11am – 1pm at Cabrillo Heights Park

**Wednesday, May 13th 5:30pm–7:30pm and Saturday, May 30th 11am-1pm
at Cabrillo Heights Park**

\$140 for the first player includes 2 community cards/\$135 for any additional sibling includes 2 community cards. (Cash, Check or Money Order Only)

Regular Registration

Saturday, June 13th 11am – 1pm at Cabrillo Heights Park

Thursday, June 25th 5:30pm – 7:30pm at Cabrillo Heights Park

\$150 for the first player includes 2 community cards/\$145 for any additional sibling includes 2 community cards. (Cash, Check or Money Order Only)

After JUNE 30TH

\$170 PER PLAYER Includes 2 community cards – NO DISCOUNTS

Again This Year! **BRING AND REGISTER A FRIEND** WHO DID NOT PLAY WITH REGION 780 LAST YEAR, TO ANY OF THE ABOVE EVENTS AND ***EACH PLAYER SAVES \$5!*** Please only one “bring a friend” discount per player. Players must register and pay on same day and time.

New This Year!! **Military Discount with Proof of Military ID.** *Each Player Saves \$5.00*

DISCOUNT CARDS: 2 Community Cards with discounts to local restaurants, entertainment venues and other businesses. The cards may be kept by the family or sold for \$10 each to recoup your money. There is a maximum of 4 cards per family. Good at all participating retailers, just show the card to get your discount. Use it again and again!



Serra Mesa Observer
Editor: *Ronda Adams*
Post Office Box 23315
San Diego, CA 92193

PRSRT STD
US POSTAGE
PAID
PERMIT 0639
SAN DIEGO CA

Dated Material

FRIENDSHIP LUNCH OPEN TO THE COMMUNITY

Join us for the Friendship Lunch.

Gethsemane Lutheran Church and Mission Village Christian Fellowship offer the Serra Mesa community a soup, bread, and dessert lunch every Wednesday at noon.

The “Friendship Lunch” with **no age limitation** is at MVCF in the even months (i.e. April) and at Gethsemane in the odd months (i.e. March).

There is no cost but all are invited to bring a can or package of food for the Serra Mesa Food Pantry.

The churches are located at 2696 and 2650 Melbourne Drive.
More information at 858-277-6572 or 858-278-2633.