



PUBLISHED BY THE SERRA MESA COMMUNITY COUNCIL

VOLUME 30, ISSUE 3    MAY / JUNE 2016

## Serra Mesa Major Division Tigers 2016 Clay Berry Invitational Tournament Champs!



Congratulations to Serra Mesa Little League Major Division Tigers for winning the 9th annual Clay Berry Invitational and taking home the flag.

The 9th annual CBI Tournament took place Friday, April 1st thru Sunday, April 3rd, 2016 at Little League Baseball Western Region Headquarters. The weather was outstanding for all of the games. This year the following leagues participated in the CBI: *San Carlos Cubs, Tier-rasanta Mets, Lake Murray Cubs, Murphy Canyon Gunners, Mission Trails Blue Jays, La Mesa National Aztecs, Serra Mesa Tigers and the Rolando Chihuahuas.*



[www.SerraMesa.org](http://www.SerraMesa.org)

You are invited to participate in the  
**Serra Mesa Community Council**

Wednesday, May 25  
6:30 p.m.

*Serra Mesa - Kearny Mesa Library  
Community Room, 9005 Aero Drive*

**Serra Mesa Community Council**  
Wednesday, June 22  
6:30 p.m.

*Serra Mesa - Kearny Mesa Library  
Community Room, 9005 Aero Drive*

Neighborhood People  
and Friendly Businesses  
Living and Working Together

**Serra Mesa Community Council Board****Officers**

Carl Demas.....	(858) 565-2473*
<i>President</i>	
Diane Romita .....	(858) 565-2473*
<i>Vice President</i>	
Andrea Eaton.....	(858) 565-2473*
<i>Treasurer/Community Events</i>	
Cindy McIntyre .....	(858) 565-2473*
<i>Secretary</i>	

**Board Members**

Jackie Ander.....	(858) 565-2473*
<i>Friends of the Library</i>	
Debbie Campbell.....	(858)565-2473*
<i>Community Events</i>	
Jon Cima.....	(858)565-2473*
<i>SMRC</i>	
Cindy McIntyre.....	(858)565-2473*
<i>Education Committee</i>	
Tom Leech.....	(858)565-2473*
<i>Current Issues</i>	
Cindy Moore.....	(858)565-2473*
<i>Special Projects/SMPG</i>	
Annemieke Frost Hutchinson.....	(858)565-2473*
<i>Neighborhood Watch/Community Events</i>	
Jennifer St. Clair.....	(858)565-2473*
<i>Pantry, Garden, Village Coordinator</i>	
Terry O'Regan.....	(858)565-2473*
<i>Local Business Coordinator</i>	

**Appointed Positions**

Myra Webb.....	(858)565-2473*
<i>Subscription Records</i>	
Ronda Adams.....	(858)565-2473*
<i>Observer Editor</i>	
Melissa Cima.....	(858)565-2473*
<i>Observer Staff/Education</i>	
Cindy McIntyre.....	(858)565-2473*
<i>Observer Staff</i>	
Marge Demas.....	(858)565-2473*
<i>Mailing Coordinator</i>	
Brad Beyenhof.....	(858)565-2473*
<i>Webmaster</i>	
Robin Rivera.....	(858)565-2473*
<i>Message Coordinator</i>	
Pat Brownyard.....	(858)565-2473*
<i>Welcome to Serra Mesa</i>	
Elizabeth Rice.....	(858)565-2473*
<i>Utility Box Coordinator</i>	

\*Contact by calling (858) 565-2473 & leaving a message.

**Serra Mesa Observer** is published bimonthly by the Serra Mesa Community Council with a circulation of approx 800  
Annual fees: Household...\$15 Sponsor...\$25 Benefactor...\$50

For subscriptions and ads, call (858) 565-2473  
Council doesn't endorse ads.

**Articles, Ideas, & Upcoming Events for the Observer**  
are welcome. Editor reserves right to edit articles.

For articles, e-mail Ronda Adams - rondakadams@msn.com

**Deadline:** July / August Edition...June 19th

P.O. Box 23315, San Diego, CA, 92193  
<http://www.serramesa.org>  
[communitycouncil@serramesa.org](mailto:communitycouncil@serramesa.org)

**SERRA MESA COMMUNITY GROUPS**

Serra Mesa Community Council	(858) 565-2473
e-mail: <a href="mailto:communitycouncil@serramesa.org">communitycouncil@serramesa.org</a>	
Serra Mesa Planning Group	(858) 565-2473
e-mail: <a href="mailto:smpg@serramesa.org">smpg@serramesa.org</a>	

**ELECTED OFFICIALS**

Board of Education Kevin Beiser	(619) 725-5550
City Councilmember Scott Sherman	(619) 236-6677
Mayor Kevin Faulconer	(619) 236-6330
County Supervisor Ron Roberts	(619) 531-5544
State Assemblymember Toni Atkins	(619) 645-3090
State Senator Marty Block	(619) 645-3133
Governor Jerry Brown	(619) 525-4641
U.S. Representative Susan Davis	(619) 448-5201
U.S. Senator Dianne Feinstein	(619) 231-9712

**CALENDAR OF COMING EVENTS**

May 10	Friends of Serra Mesa-Kearny Mesa Library 5:30 p.m., Serra Mesa-Kearny Mesa Library, Sudberry Room
May 17	Serra Mesa Recreation Center Council Meeting 6:30 p.m., 9020 Village Glen Drive
May 19	Serra Mesa Planning Group 7 p.m., Serra Mesa-Kearny Mesa Library, Community Room
May 21	Hearing Loss Association of America (San Diego) 10:30 a.m., Mission Village Christian Fellowship
May 25	Serra Mesa Community Council 6:30 p.m., Serra Mesa-Kearny Mesa Library, Community Rm
May 25	Friends of Ruffin Canyon 5:30 p.m., Serra Mesa-Kearny Mesa Library, Community Rm
June 4	Friends of Ruffin Canyon Cleanup 9:00 a.m., Shawn Avenue entrance to Ruffin Canyon
June 16	Serra Mesa Planning Group 7 p.m., Serra Mesa-Kearny Mesa Library, Community Room
June 18	Hearing Loss Association of America (San Diego) 10:30 a.m., Mission Village Christian Fellowship
June 21	Serra Mesa Recreation Center Council Meeting 6:30 p.m., 9020 Village Glen Drive
June 22	Friends of Ruffin Canyon 5:30 p.m., Serra Mesa-Kearny Mesa Library, Community Rm
June 22	Serra Mesa Community Council 6:30 p.m., Serra Mesa-Kearny Mesa Library, Community Rm
July 2	Friends of Ruffin Canyon Cleanup 9:00 a.m., Shawn Avenue entrance to Ruffin Canyon <i>Serra Mesa Enhancement Committee meetings - write to P.O. Box 23315, San Diego, CA, 92193.</i>

**In This Issue...**

SMCC Community Forums	1
Community Phone Numbers, Calendar	2
President's Message	3
Birthday Celebrations Friendship Luncheon, Summer Concerts	4
Free Classes SDCE, SM Rec Center, Serra Mesa Village	5
Serra Mesa Planning Group News	6
Important Phone Numbers, Senior Fitness Class	7
President's Message for Serra Mesa Village	8
Market on the Mesa, Serra Mesa 92123 T-shirt sale	9
AYSO Region 780 Fall 2016 Registration	10
Movie Nights	11
SMEC	12
SMCC New and Renewed Members	13
Friends of Ruffin Canyon	14
Sewer Pipeline Rehabilitation Project	15
Wegeforth Joint Use Park	16
Serra Mesa-Kearny Mesa Branch Library	17
Correction for the September/October Observer	19

## **PRESIDENT'S MESSAGE**

### **Help needed to implement Market on the Mesa**

For the past 15 years, we have been looking for a source for fresh fruits and vegetables available in our neighborhood. Thanks to Debbie Lou and her team of organizers, we are almost there but still need your help. The site is the NE Corner of Gramercy Drive and Sandrock Road. (Across from CVS Pharmacy).

#### **HOW TO CONTRIBUTE TO THE STARTUP FUND**

The key is small to medium pledges (\$5, \$10, etc.) from MANY people will be Key to demonstrating Community-wide support.

If you can't or prefer not to use a credit or debit card, mail a check to the Serra Mesa Community Council at P.O. Box 23315, San Diego 92193. Make the check out to *Serra Mesa Community Council* and note "*Market on the Mesa*" in the memo line. We do encourage everyone to pledge via Kick-starter if at all possible.

If you have any questions, e-mail [smfarmersmarket@outlook.com](mailto:smfarmersmarket@outlook.com) or call 619-201-2280

**Help Create Serra Mesa's First-Ever  
Farmers Market**  
*Requesting Pledges by April 30*



**Market  
on the Mesa**  
SERRA MESA FARMERS MARKET

**How to Contribute to the Startup Fund**

Go grab your credit or debit card and pledge a few dollars to our  
Kickstarter campaign at [www.tinyurl.com/marketonthemesa](http://www.tinyurl.com/marketonthemesa)

Small to medium pledges (\$5, \$10, etc.) from *MANY* people will be  
**KEY** to demonstrating *community-wide support*.

If you can't or prefer not to use a credit or debit card, mail a check to the Serra  
Mesa Community Council at P.O. Box 23315, San Diego 92193, and write the check  
out to "SMCC" and note "Market on the Mesa" in memo line. However, we do  
encourage everyone to pledge via Kickstarter if at all possible.

*Be sure to pledge before April 30.*  
*Thank you for supporting a healthier Serra Mesa!*  
*Questions? Email [smfarmersmarket@outlook.com](mailto:smfarmersmarket@outlook.com) or call 619-201-2280*



March was an exciting month for the Friendship Lunch that happens every Wednesday at noon at Mission Village Christian Fellowship.

We celebrated with Ruth Gallivan on the occasion of her 100th birthday which was April 1. Her 2 cakes read, “No Fooling!” “Ruth is 100 on April 1”. Ruth lives independently, attends the Senior Exercise class regularly, and served as a Marine in World War II. “Once a Marine, always a Marine.” Two weeks earlier, we celebrated with Lorraine Rath on the occasion of her 93rd birthday. What a joy and inspiration to be around Ruth and Lorraine. Finally, we sang “Happy Anniversary” to Carl and Marge Demas as they set sail on a 50th Anniversary Cruise. Having had so much fun, every first Wednesday of the month will be celebrated with a birthday cake.

All ages are welcome to the weekly Friendship Lunch, sponsored by Gethsemane Church and Mission Village Christian Fellowship. We regularly have people join us who are in their 20s and 30s. Salad, soup, bread, and dessert are served each week. There is no charge but donations are accepted to keep the salad flowing.

**Gethsemane Lutheran Church  
Summer Concert Series  
by Andy and Debbie Attwood**

They will have a Pop Concert at 5pm on May 21 as part of a Fiesta Fundraiser for the annual house building trip to Tijuana. Then on June 25, July 30, and August 27 there are Gospel Music Concerts at 5 p.m. followed by a Salad Bar Supper at 6 p.m. For information or reservations, call 858-277-6572 or email [church@gethsemanesd.org](mailto:church@gethsemanesd.org).



*Improve* your home.  
*Improve* your bottom line.

Jason LaMell | Broker  
619.300.5697  
[www.improvereadtyus.com](http://www.improvereadtyus.com)  
CalBRE#01861043

*Instead of selling  
your home “As-is”,  
let us remodel to get  
you more money!*

- We **remodel** your home
- We **sell** it fast
- You keep the **profit**

(No out-of-pocket costs)  
Put our expertise to work  
for you! Call to find out  
how. 619.300.5697

Endodontics      Crowns      Cosmetics  
Prosthodontics           Implants

**WILLIAM E. LARSON, D.M.D.**  
AERO DENTISTRY

3755 Murphy Canyon Rd. #D  
San Diego, CA 92123

Tel: (858) 277-2999  
Fax: (858) 277-3086

**ABLE PLUMBING AND DRAIN SERVICE**

CA LIC. 681475  
LIABILITY INSURED

**SCOTT FIORI**  
PLUMBER92123@GMAIL.COM  
BBB MEMBER

8431 FIRESIDE AVE  
SAN DIEGO CA 92123

858 277 1153  
CELL 619 985 8204

## Helping San Diegans Stay Competitive in the Job Market

**Free Classes**

**February 3-June 11**



**Business, Computers and Information Technology**

Class schedule available online  
[sdce.edu](http://sdce.edu)

**SAN DIEGO  
CONTINUING  
EDUCATION**



## Serra Mesa Recreation Center

9020 Village Glen Dr.  
(858) 573-1408

1:00 - 8:00 p.m. Monday, Tuesday, Thursday  
1:00 - 9:00 p.m. Wednesday  
2:00-6:00 p.m. Friday  
10:00 a.m. - 4:00 p.m. Saturday  
Closed Sunday.

### Community Sports Information:

A.Y.S.O. Soccer: (858) 268-5880

N.Y.S. Soccer : (858) 973-6101

SD United Soccer: (858) 457-4625

Serra Mesa Senior Softball:  
(858) 279-4283

Serra Mesa Little League: (858) 279-8361

Serra Mesa Recreation Council meets on  
May 17 & June 21 at 6:30 p.m.

## Serra Mesa Village

...a neighborly network of seniors for seniors  
...sponsored by the Serra Mesa Community Council

### Monthly Regular Activities

**3<sup>rd</sup> Thursday, 3-5pm** Connect with others at the Meeting Room at the Serra Mesa Library; speakers and information for seniors and those who care about them.

**1<sup>st</sup> Thursday, 10am-2/3pm** Trips to interesting places in San Diego; meet at the Library to carpool.

**2<sup>nd</sup> and 4<sup>th</sup> Wednesday, 1-3pm** Social time for games, conversation, crafts, and whatever; meets at Gethsemane Meeting Room, 2696 Melbourne Dr.

**1<sup>st</sup> and 3<sup>rd</sup> Mondays, 1-2:30pm** Coordinating Board (open to all) at Gethsemane Meeting Room, 2696 Melbourne Dr.

### Contact us:

[www.serramesavillage.org](http://www.serramesavillage.org)  
(resources/information/etc.)

[serramesavillageio@gmail.com](mailto:serramesavillageio@gmail.com)

858-565-2473 (Leave a message)

P.O. Box 23315, San Diego, CA 92193

## CABRILLO POOL SERVICE

Mike Nelson

Free Estimates!

619-756-  
2087

P.O. BOX 23726

SAN DIEGO CA 92193-0726 [cabrillopoolservice@outlook.com](mailto:cabrillopoolservice@outlook.com)



## Gethsemane Lutheran Church



Gloria Espeseth  
Pastor

[www.gethsemanesd.org](http://www.gethsemanesd.org)

2696 Melbourne Drive  
San Diego, CA 92123

Worship 9:30am  
(858) 277-6572

## **SERRA MESA PLANNING GROUP NEWS**

The Serra Mesa Planning Group (SMPG) is officially recognized by the City and makes recommendations on land use issues to the City. SMPG meets the third Thursday of the month, 7 pm, at the Serra Mesa-Kearny Mesa Library, 9505 Aero Dr. Next meetings: May 19 and June 16. To contact us, email [smpg@serramesa.org](mailto:smpg@serramesa.org).

SMPG's bylaws allow fifteen board members. **SMPG has one board opening.** Anyone who is at least 18 years old, affiliated with the community as a property owner, resident of Serra Mesa, or a local Serra Mesa business person and who has attended two SMPG meetings in the last six months is eligible to be elected. The City provides training. See <http://www.sandiego.gov/planning/community/resources/cow/index.shtml>.

Welcome, Ian Clampett, elected to the SMPG board on April 21.

### **Summary of March 17 Meeting (April 21 Meeting Cancelled)**

**Annual Election.** Jim Antoshak, Chris Castillo, Tony Guerra, Cindy Moore, Nick Romero, and Barbara Ryan were re-elected.

**Redevelopment of the Kelco building at 8225 Aero Drive** in the Kearny Mesa area –The developer described a mixed use project and asked for input. An Environmental Impact Report will probably be required.

### **Update & News**

**SMPG Bylaws** –Revisions were approved.

**Franklin Ridge Road Subcommittee Formed** – The main purpose of this subcommittee is to review the EIR and draft a response letter for the review of the SMPG. This subcommittee will meet on Wednesday, May 18, 6:30 pm, at the Serra Mesa-Kearny Mesa Library.

**Agenda Items for May 19 –Location of this meeting has changed to City View Church** (watch for an e-mail announcement)

**Election of Officers.** The SMPG board elects a Chair, Vice-Chair, and Secretary. Cindy Moore is stepping down as the Chair (decided that it's time for a break), but will continue to serve on the board. The assistance of board members has made her role as chair easier. Special recognition goes to **Bob Crider** who attends the Community Planners Committee's monthly meetings and **Bob McDowell** who posts the banner at the library announcing SMPG meetings, responds to the City's request asking about the historical significance of a property whenever a building/construction permit is submitted for a Serra Mesa building, and attends the monthly meetings of the Kearny Mesa Planning Group and Mission Valley Planning Group.

**Environmental Impact Report (EIR) for the Franklin Ridge Road connection** between Phyllis Place in Serra Mesa and Civita in Mission Valley – Presentation by City staff. **The EIR is available for review at** [www.sandiego.gov/planning/programs/ceqa](http://www.sandiego.gov/planning/programs/ceqa).

**Civita Correction** – In the April 8-May 12, 2016 edition of the *Mission Valley News* it was reported in an article that "If transportation officials approve a Civita exit off Interstate 805 – which is currently a fire road – the road will run behind the project." It was confirmed with Sudberry Properties, developer of Civita, that the above statement is erroneous. Furthermore, there are no plans to open up Kaplan.

## **IMPORTANT PHONE NUMBERS**

Abandoned Vehicles &		Police Department - Eastern Division	(858) 495-7900
Police Non-Emergency	(619) 531-2000	Post Office	(800) 275-8777
Airport Noise - Montgomery Airfield	(858) 573-1436	Poison Control Center	(800) 876-4766
Animal Control	(619) 767-2675	Rape /Domestic Violence Hotline	(858) 272-1767
Bus & Trolley Schedules	(619) 233-3004	RSVP (Retired Seniors Volunteer Patrol)	(858) 495-7990
Canyon Cleanup	(619) 533-4411	SDG&E Emergencies	(800) 411-7343
Child Abuse Hotline	(858) 560-2191	Senior Citizen Services	(619) 236-6905
City Clerk - Docket Information	(619) 533-4000	Serra Mesa Library	(858) 573-1396
Crime - General Business	(619) 531-2000	Serra Mesa Recreation Center	(858) 573-1408
Crime Stoppers	(619) 235-8477	Sidewalk Repair	(619) 527-7500
Dead <b>Animal</b> Removal stay on the line)	(858) 694-7000	Stadium Manager	(619) 641-3101
Emergency Information - Earthquake	(858) 565-3490	Stadium Security & Noise	(619) 641-3150
Fallen Trees	(858) 527-7500	Stolen Property/Bicycles - To Report	(619) 531-2000
Fire Department - Non-emergency	(619) 533-4300	Storm Drain Misuse	(619) 235-1000
Flies & Vermin	(858) 694-2888	Street Repair - Faded signs, pavement	(619) 527-7500
Graffiti	(619) 525-8522	Traffic Signal Maintenance	(619) 527-8650
Hazardous Chemicals & Waste	(858) 694-7000	Water Emergencies - City & Private	(619) 515-3525
Health Violations	(619) 338-2222	Weeds	(619) 533-4444
Kearny High Alumni Association	(619) 699-0886	Zoning/Permits - Questions & Violations	(619) 446-5000
Litter - City Owned/Private Property	(858) 492-5055		
Meals On Wheels	(619) 260-6110		
Neighborhood Code Compliance	(619) 236-5500		
Barking Dogs, Code Violations, Noise, Safety			

### **Senior Fitness Classes in Serra Mesa with Katrina**

About the classes:

Low impact senior fitness classes are held each Wednesday morning. Currently they are at 11 am at Katrina's home. The class is 45 minutes in length and it includes a cardio warm up, strength training with light weights and therabands. We alternate which one we use each week. The strength training includes working both lower and upper body muscles, as well as the abdominal area. We also use small therapy balls both for working out and a bit of fun. Also included in the workouts are balance exercises. And we finish each workout with a stretch. We have a great group that enjoys socializing, so part of the benefits of this class is getting to socialize!

We are thinking about adding another class a different day of the week. I am also looking into being able to accept those with Silver Sneakers Insurance coverage to be able to participate in the classes.

If you want more information on the location and to see if any changes have occurred please either contact Kathy at 858 361 7561 pr Katrina at [fitkatinsd@aol.com](mailto:fitkatinsd@aol.com). There is a low monthly fee for the class.

About Katrina:

Let me tell you about myself. I have lived in Serra Mesa for over 20 years. I have been teaching group fitness for over 12 years, and I have worked in Senior fitness for about 10 years. I am certified through the American Council on Exercise in both Group Exercise and Personal Training. I am also currently certified in First Aid, CPR and AED training. I have also been trained in various formats for Senior Fitness which include Silver Sneakers, Geri Fit, and Aquatic Fitness through the Aquatic Exercise Association. I am passionate about fitness and I enjoy working with the senior population through fitness.

I started these classes for the individuals that would like to exercise but are concerned about the level of the activity in traditional senior fitness classes and whether or not they can keep up. Also for the individuals who are uncomfortable with going into a gym. I truly want to be able to serve the community of Serra Mesa in this fashion.

### President's Message for Serra Mesa Village

As you know, Serra Mesa Village ([serramesavillage.org](http://serramesavillage.org)) is an organization for seniors by seniors to assist our seniors in staying in their homes longer. Many of us are not ready for assisted living for a variety of reasons one of them being that we don't feel like seniors. One of the ways we do that is by doing a monthly travel experience. We have been doing that since January 2015 and have really established a wonderful opportunity for people who have time available on the First Thursday of every month. Our last was the Mingei Museum at Balboa Park. This museum collects, conserves and exhibits folk art, craft and design. We saw flags from Ghana and a display of artifacts from Japan. Our next trip on May 5<sup>th</sup> will be the Japanese Friendship Garden in Balboa Park. We meet at 10 AM at the Serra Mesa Library on the 1<sup>st</sup> Thursday to carpool and then drive to the event. Normally we have lunch at the site or close by and then have our members home by 2 PM. Please review the attached calendars and attend whenever you feel called to attend.

May 2016						
Serra Mesa Village Events Calendar						
Sun	Mon	Tue	Wed	Thu	Fri	Sat
1	2 1:20 PM Board Meeting @ Gethsemane SunRoom	3	4 11-12 PM Exercise Class at 3801 Pomeroy St 12-1PM Lunch at Mission Village Fellowship Hall	5 10 AM Travel Event - Japanese Friendship Garden - Meet at 10 AM at SM/KM Library Parking Lot	6	7
8	9	10	11 11-12 PM Exercise Class at 3801 Pomeroy St 12-1PM Lunch at Mission Village Fellowship Hall 1-3PM Social Activities at Gethsemane SunRoom	12	13	14
15	16 1:20 PM Board Meeting @ Gethsemane SunRoom	17	18 11-12 PM Exercise Class at 3801 Pomeroy St 12-1PM Lunch at Mission Village Fellowship Hall	19 5-5 PM General Meeting At SM/KM Library, Bridget Barnett, VP- Elder Abuse Unit SOPD	20	21 10:30-12:30 PM HLAA at Mission Village Fellowship Hall
22	23	24	25 11-12 PM Exercise Class at 3801 Pomeroy St 12-1PM Lunch at Mission Village Fellowship Hall 1-3PM Social Activities at Gethsemane SunRoom	26	27	28
29	30	31 HLAA - Hearing Loss Association of America	Katrina's Home 3801 Pomeroy St. 92123	SM/KM Library 9006 Aero Drive 92123	Mission Village Fellowship 2650 Melbourne Drive, 92123	Gethsemane 2696 Melbourne Drive, 92123

More Calendars with US Holidays: [May-2016](http://May-2016), [Jun-2016](http://Jun-2016), [JULY-2016](http://JULY-2016)

June 2016						
Serra Mesa Village Events Calendar						
Sun	Mon	Tue	Wed	Thu	Fri	Sat
SM/KM Library 9006 Aero Drive 92123	Mission Village Fellowship 2650 Melbourne Drive, 92123	Gethsemane 2696 Melbourne Drive, 92123	1 11-12 PM Exercise Class at 3801 Pomeroy St 12-1PM Lunch at Mission Village Fellowship Hall	2 10 AM Travel Event - Liberty Station - Meet at SM/KM Library Parking Lot For ride sharing.	3	4
5	6 1:20 PM Board Meeting @ Gethsemane SunRoom	7	8 11-12 PM Exercise Class at 3801 Pomeroy St 12-1PM Lunch at Mission Village Fellowship Hall 1-3PM Social Activities at Gethsemane SunRoom	9	10	11
12	13	14	15 11-12 PM Exercise Class at 3801 Pomeroy St 12-1PM Lunch at Mission Village Fellowship Hall	16 5-5 PM General Meeting At SM/KM Library, Bridget Barnett, VP- Elder Abuse Unit SOPD	17	18 10:30-12:30 PM HLAA at Mission Village Fellowship Hall
19	20 1:20 PM Board Meeting @ Gethsemane SunRoom	21	22 11-12 PM Exercise Class at 3801 Pomeroy St 12-1PM Lunch at Mission Village Fellowship Hall 1-3PM Social Activities at Gethsemane SunRoom	23	24	25
26	27	28	29 11-12 PM Exercise Class at 3801 Pomeroy	30	Katrina's Home 3801 Pomeroy St. 92123	HLAA - Hearing Loss Association of America

More Calendars with US Holidays: [May-2016](http://May-2016), [Jun-2016](http://Jun-2016), [JULY-2016](http://JULY-2016)



By Debbie Lou, Director, Wholesome Neighborhood Project (WNP). WNP is leading the creation of Market on the Mesa, Serra Mesa's farmers market.

It's been a very busy and exciting spring for the farmer's market initiative! I formed a new group called the Wholesome Neighborhood Project (WNP) consisting of four other women, and developed a contract with the Serra Mesa Community Council to act as WNP's fiscal sponsor. WNP launched a Kickstarter campaign to raise money to fund Market on the Mesa's startup and operational costs through its first year. Our total goal is \$11,000. We set our Kickstarter goal at \$8,000 and anticipated the other \$3,000 to come from people who prefer sending checks or who do not use email or internet.

The Kickstarter campaign was a bit nerve-racking, because we were running an "all-or-nothing" campaign. This meant we had to secure at least \$8,000 in pledges within a limited time in order for us to get any of the money raised via Kickstarter. This was the first time Serra Mesa had ever attempted this type of online fundraising, and there was really no way to tell whether the community would respond. Impressively, the pledges, ranging from \$5 and up to \$500(!!!), started coming in, enabling us to meet the \$8,000 minimum about one week ahead of the April 30 deadline.

As I am writing this, we have raised a total of \$9,750, and we're confident we will be able to raise the total needed and be able to open Market on the Mesa by summer. We look forward to seeing you soon among the fresh fruits and veggies on display at our very own farmers market!

We welcome questions or comments about this project. Please contact Debbie at [smfarmersmarket@outlook.com](mailto:smfarmersmarket@outlook.com). And if you would like to contribute to our fund, you can mail a check to the Serra Mesa Community Council at P.O. Box 23315 San Diego, CA 92193. Please indicate "farmers market" in the memo line. A huge and hearty thank you to everyone who has supported us!



### Serra Mesa 92123 T-shirt's for sale

Order your Serra Mesa T-shirt and support your community! T-shirts are navy blue with white lettering. We have men's tank tops and T-shirts, women's tank tops and V-neck t-shirts in a variety of sizes. Shirts are \$9.90 and can be ordered by contacting the Serra Mesa Community Council at 858-565-2473, [communitycouncil@serramesa.org](mailto:communitycouncil@serramesa.org). T-shirts will also be for sale at monthly community council meetings.



## **AYSO REGION 780 FALL 2016 REGISTRATION**

BOYS AND GIRLS AGES 4-18 (must be 4 by July 31, 2016)

ALL PLAYERS MUST PRE-REGISTER AT [www.eayso.org](http://www.eayso.org) PRIOR TO REGISTRATION.

You must bring **2 printed copies of your completed registration form for each player, including the concussion form.** Registering online DOES NOT preclude you from having to attend one of the following registration days to finalize your registration!  
PLEASE NOTE THAT NEW PLAYERS WILL BE REQUIRED TO PROVIDE PROOF OF BIRTH DATE.

### **Early Bird Registration: Pay Early and Save!**

**Saturday, April 9<sup>th</sup> & April 23<sup>rd</sup> 11am – 1pm at Cabrillo Heights Park**  
**Wednesday, May 11<sup>th</sup> 5:30pm–7:30pm and Saturday, May 21<sup>st</sup> 11am-1pm**  
**at Cabrillo Heights Park**

**\$145 for the first player includes 2 community cards/\$140 for any additional sibling includes 2 community cards. (Cash, Check or Money Order Only)**

### **Regular Registration**

**Saturday, June 11<sup>th</sup> 11am – 1pm at Cabrillo Heights Park**  
**Thursday, June 23<sup>rd</sup> 5:30pm – 7:30pm at Cabrillo Heights Park**  
**\$155 for the first player includes 2 community cards/\$150 for any additional sibling includes 2 community cards. (Cash, Check or Money Order Only)**

### **After JUNE 30TH**

**\$175 PER PLAYER Includes 2 community cards – NO DISCOUNTS**

Again This Year! **BRING AND REGISTER A FRIEND** WHO DID NOT PLAY WITH REGION 780 LAST YEAR, TO ANY OF THE ABOVE EVENTS AND **EACH PLAYER SAVES \$5!** Please only one “bring a friend” discount per player. Players must register and pay on same day and time.

Again This Year!! **Military Discount with Proof of Military ID.** *Each Player Saves \$5.00*

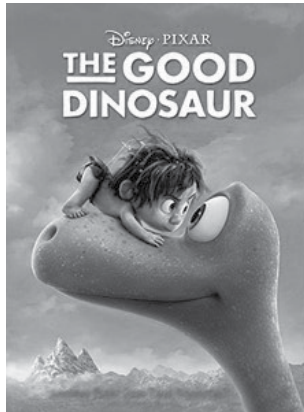
**DISCOUNT CARDS:** 2 Community Cards with discounts to local restaurants, entertainment venues and other businesses. The cards may be kept by the family or sold for \$10 each to recoup your money. There is a maximum of 4 cards per family. Good at all participating retailers, just show the card to get your discount. Use it again and again!

AYSO 780/Stacy Prater (858)268-5880 19750 S. Vermont Ave., #200, Torrance, CA 90502



## Join us at Cabrillo Heights Park for free movie nights in Serra Mesa!

All movies will begin at dusk.



The Good Dinosaur on July 23rd



Inside Out on August 13th



Minions on September 17th

**Holy Angels Byzantine Catholic Church**  
2235 Galahad Road, San Diego, CA 92123

**Divine Liturgy on Sunday at 9 a.m.**

**Eastern European Ethnic Foods**

**Available in the Church Hall**

Open 10 a.m. to 2 p.m.—Friday-Tuesday

Closed on Wednesday and Thursday

Please call before coming to buy the food.

858-268-3458

*Marvin Sloben*

Photographer

**619.239.2828**

Msloben@san.rr.com

3026 North Park Way • San Diego, CA 92104



**\*From Concept to Completion\***

18 years strong Serra Mesa

Video Production Company

Venue Filming\*Music Video Production\*Video Montages

Media/Marketing Relations

Ask for Liz: [emlmedia@yahoo.com](mailto:emlmedia@yahoo.com)



**St. Columba Parish**

3327 Glencolum Drive

San Diego, CA 92123

(858) 277-3863

Sunday Mass

7:30, 9:30 a.m. & 5:30 p.m.

Saturday

8:00 a.m. & 5:30 p.m.

Mon-Fri.

7:00 a.m.

Holy Days

Please call the church for schedule

## **SERRA MESA ENHANCEMENT COMMITTEE**

The Request for Investigation form is included in this Observer edition. SMEC contact information: Address - P.O. Box 23315, San Diego, CA 92193; Email - [serramesaenhancementcommittee@hotmail.com](mailto:serramesaenhancementcommittee@hotmail.com). If you are interested in becoming a SMEC volunteer, please contact us. The City requires training for volunteers; your name will be added to the list for the next available training (approximately 2 hours).

**Focus:** The focus of SMEC is information, education, cooperation and assistance in the area of code compliance. SMEC sends educational letters to residents requesting voluntary compliance in the areas of excessive weeds, miscellaneous storage, lawn parking, and other violations on an as needed basis. Many people are simply not aware of the codes, whose main purpose is to help keep the community looking nice, keep peace among its neighbors, and prevent nuisances in the neighborhood. SMEC makes referrals to Code Compliance as a last resort when the resident doesn't respond to our letters.

**Composition:** SMEC is composed of residents living in Serra Mesa (includes the Birdland area). SMEC volunteers are required to go to a City-sponsored training in order to be indemnified by the City. The amount of volunteer time varies with the volunteer from one hour a month to many.

**Confidentiality:** SMEC maintains the confidentiality of complainants, violators, and volunteers. SMEC members remain anonymous so the benefits of volunteering are intrinsic - the satisfaction of seeing improvements in the community and helping residents resolve community concerns.

**Accomplishments:** SMEC provides information through regular *Observer* columns. The efforts of SMEC have resulted in improvements in many residences in Serra Mesa and the resolution of community issues. The identity of SMEC cases is kept confidential.

### **Signs**

This is the season for political signs. Many candidates hire companies to place signs throughout communities. They do this without regard for the regulations.

The Municipal Code prohibits the placing of unauthorized signs within public rights-of-way and on public properties. Public right-of-way means a public easement for streets, alleys, or other uses. It includes the parkway and sidewalk area which is measured from the curb to the property line of the building.

Illegal signs placed in the public-right-of-way and on other public properties include, but are not limited to the following: signs affixed to trees, utility poles and boxes, and traffic directional and parking information poles; portable signs placed on public sidewalks or in the parkway, and for sale, for lease or for rent signs.

Those responsible for the illegal signs can be required to reimburse the City for all costs associated with the removal of the signs. To ask questions regarding allowable signage, contact Development Services at 619-446-5000. To report illegal signs, call 619-236-5500.

Signs placed in a residential yard are not illegal. There is no limit to the number of signs that can be placed but there are size and type restrictions depending on the zone in which the property is located. In most cases signs placed on telephone poles, light poles, city fences, and on shopping center property are illegal.

If you have a garage sale, please remember to remove your signs when the sale is over.

***Serra Mesa Community Council Welcomes  
March / April New and Renewed Subscribers***

Donald & Gail Bamber  
Patricia Barton  
Pat Baumgartner  
Emma Berdan  
Dee & Hugh Bertram  
George & Pat Brownyard  
Beverly Bruff \*  
William Brunnhoelzl  
Douglas Byrne  
Deborah Campbell  
Sherrie Caradonna  
Curtis Carlson  
Jon & Melissa Cima  
Vicki DeNardo  
Lyn Elms  
Faith Community Church  
Sean Fuentes  
Diane Gage  
Corey Gambill  
Bill & Susan Graham \*  
Alex & Sally Handgis \*  
Eileen Harrington  
Wayne & Caroline Harris \*  
Mary Hayward  
Robert & Sharon Horn

Bill & Barbara Horton  
Art & Marilyn Imdieke  
Dolores Janik  
Jo Ann Jeffries  
Mark & Bernadine Johnson \*  
Sonia Khuu  
Bryan & Andrea Knox \*  
Jan Lawrence  
Bud & Jean Lupton  
Marty & Judy Marion \*\*  
Pasquale Massaro  
Elbert McCune \*  
Richard Mennis \*  
Margaret Miller  
Jamie & Raleigh Moody  
Larry O'Dell  
Lillian Palmer  
Mary Quinn  
Wayne & Jane Riner \*\*  
Dolores Salini  
Elise & Mike Savage  
M. Schaefer / P. Simon  
Gail Scott  
Christine & Lee Shick \*  
Ken & Shelly Smith

Edward & Maxine Solarski  
Mike Sumber  
Richard & Alice Tanner  
Harold & Velma Teel  
Robert & Eleanor Villandre  
Pat Warner/Geer Morton  
Robert & Charlotte Watson  
Kristine Webb  
Lorraine Webb  
Myra Webb  
Ruth Whitehead  
Betsy Winters \*  
Gary & Kim Yadach

OUR VALUED ADVERTISER:  
Able Plumbing & Drain Service

Donation: \*\*Benefactor \*Sponsor

**Observer Renewal**

When it is time to renew your Observer, the renewal date is highlighted and stamped, "to be renewed." Also, a postcard will be mailed and, if possible, a phone call is made to remind you. It is greatly appreciated if you pay as soon as you notice it's time to renew.

Maybe you have a special neighbor that you'd like to say "thank you" to, or maybe you have a new neighbor that you'd like to say "welcome." We highly recommend giving a subscription to the Observer (six editions/year). A post card will be sent to the recipient.

Please fill out the enclosed form and send it with your check to P.O. Box 23315,  
San Diego, CA. 92193.

## Friends of Ruffin Canyon Updates

### SAN DIEGO RIVER DAYS - MAY 14--22

Discover the San Diego River. The San Diego River Foundation has planned activities up and down the water shed from Santa Ysabel to Ocean Beach. Check the event program at (619) 297-7380 or [www.sdriverdays.org](http://www.sdriverdays.org). There will be a guided river walk at 9am on Saturday, May 14 in Mission Valley.

**A special thank you** to Monica Fuentes, GERALYN White, Cindy Moore, Dr. Sparrow and others for all their work transforming the vacant land at the corner of Sandrocks and Gramercy to an attractive area with trees, plants and flowers.

**DON'T PLANT A PEST!** Give them an inch and they'll take an acre...

Do not plant ice plant, ivy, periwinkle, fountain grass, pampas grass, Brazilian pepper, or Mexican fan palm! ([www.cal-ipc.org](http://www.cal-ipc.org))

Darlene Ward, a former member, moved to Grass Valley in northern California. She has created a web site **"Gardening with Native Plants in the Sierra Nevada Foothills"** (<http://pages.suddenlink.net/darleneward/>). Some of you might find this web site interesting because she helped with planting the first native plants in "The Bonnie Hough Native Habitat Garden."

We are proceeding with our plans for dedicating the parkland on the east side of Taft, **"The Bonnie Hough Native Habitat Garden."** Bonnie was a founder and chair of the Friends of Ruffin Canyon from 2002 to 2015. We hope to continue our partnership with Taft Middle School students and with the restoration of this garden and canyon.

If anyone is interested in donating to Friends of Ruffin Canyon/Bonnie Hough, **just send a check payable to Serra Mesa Community Council** and in the memo line write Friends of Ruffin Canyon. **Mail to P.O. Box 23315, San Diego, CA 92193.** If anyone is interested in volunteering to work on the Memorial Committee. Just let us know.

**Chairperson:** Monica Fuentes (858-268-0106) (619-517-4314) ([jomonicer@yahoo.com](mailto:jomonicer@yahoo.com))

**Secretary/Treasurer:** Kathleen Ford ([kfrc3@yahoo.com](mailto:kfrc3@yahoo.com))

**Our business meeting place and time** is at the Kearny Mesa/Serra Mesa Library on Aero Drive at 5:30 pm before the Community Council meeting on the **4th Wednesday of the month.**

The **Canyon Clean-ups** are from 9am to 12pm on the **1st Saturday of the month** under the leadership of Park Ranger, Josh Lambdin. We alternate the cleanup location meeting place between the entrance to Ruffin Canyon at Taft Middle School or at end of Shawn Ave. off Mission Village Drive. On Saturday, April 23, Friends of Ruffin Canyon helped to sponsor the **Creek to Bay Cleanup** at the Library/Recreation Canyon. This annual event brings volunteers to our neighborhood. A special thanks to Monica Fuentes and Kevin Johnston for co chairing this event.

We always welcome new members or volunteers to help with the restoration of Ruffin Canyon. Please join us.

Mary J. Johnson (858-278-1317) ([maryjohnson@earthlink.net](mailto:maryjohnson@earthlink.net))

## Sewer Pipeline Rehabilitation Project

*Why do I see construction equipment and piles of dirt and rock on Serra Mesa streets?*

The street where the author resides has gone through the rehabilitation process. The information in this article has been copied/summarized from the City's website at <https://www.sandiego.gov/water-sewer-construction> and the construction notice.

**What is the project?** The work consists of the repair of aging and deteriorating clay and cast iron sewer pipelines. The sewer mains and laterals are lined with a hard plastic liner which avoids the need to dig up and replace the pipeline. Laterals are the smaller sewer pipes that extend from the main to each house. The work is performed by private contractors.

### What is the process?

- Crew videotapes existing condition of old pipe. If a damaged section of the main or lateral is too great to be lined, the area is repaired which involves digging into the ground or street.
- Sewer pipe cleaned to prepare pipe for lining process; pipes reinforced with new plastic liner. Resin is used to solidify the lining that is installed along the walls of the existing sewer main.
- After the main sewer pipe is lined, the below-ground laterals that connect to individual residences are located using the video taken prior to construction and using an above ground sensor. (Author's Note – If there's an S on your curb indicating the location of the sewer line, it may not be accurate; there can be inaccuracies in older homes. The S for the author's home was approximately 5 feet off.)
- Once location has been determined, the contractor installs a clean out at the intersection of the lateral and edge of the right-of-way, so that the lateral can be lined to the main. Generally, the right of way extends from the edge of the curb to 10 feet towards the house. Depending on the location a 4-foot by 4-foot area is excavated to facilitate the installation of the clean out, which accounts for the piles of dirt and rocks on the street. In some cases where there's a barrier (e.g., brick wall) the cleanout will be placed in the sidewalk. (Author's Note – the excavation may be deeper than 4 feet. Also, there are different crews responsible for different parts of the process, which accounts for the delay.)
- The newly relined sewer main and laterals are videotaped and inspected to ensure all contracted work is completed.

**Is my house part of this process?** Not every house in Serra Mesa is scheduled for this work. For the houses that are affected a door hanger with the anticipated date of construction is delivered. Access is allowed to residents but there may be street parking restrictions. To find out if your house is scheduled, go to <https://www.sandiego.gov/cip/projectinfo>, click on CIP Project Map Viewer, in the Search Type box choose address, in the Search For box enter your address. (Author's Note – The schedule for the project couldn't be found online. To find out about the schedule, call 619-533-4207 or email [engineering@sandiego.gov](mailto:engineering@sandiego.gov).)

*Cindy Moore*



## Wegeforth Joint Use Park

*Inviting, Spacious, Special, Playful, Energetic/Soothing, Green*

If you haven't already visited the new Wegeforth Joint Use Park, check it out. The park, approximately 4 acres, is adjacent to the Serra Mesa Recreation Center at 9020 Village Glen Drive.

Users: Students when school is in session; community on non-school hours

Amenities: Turfed multi-purpose sports fields (baseball, t-ball, and soccer), decomposed granite running track, bleachers, picnic areas, and parking lot with access off Glencolum, security lights, comfort station, accessibility upgrades to accommodate persons with disabilities

Maintenance Responsibility: City of San Diego Parks & Recreation

### History

Budget - \$3.3 million

- Primarily funded by the designated park and recreation funds from the Mirabella development on Kearny Villa Road located in the Kearny Mesa planning area, negotiated in 2005 while Donna Frye was Serra Mesa's city councilmember.
- Some funds from designated park and recreation funds from Broadstone Corsair development on Aero Drive located in the Kearny Mesa planning area, negotiated in 2008 while Donna Frye was Serra Mesa's city councilmember.
- Some funds from City Councilmember Scott Sherman's office.

### Process

- Wegeforth placed on the school district's joint use project list more than fifteen years ago.
- Funds from Mirabella became available in 2007.
- Serra Mesa Planning Group and Serra Mesa Park & Recreation Council selected Wegeforth Joint Use Project as the number one priority for the use of the designated park and recreation funds.
- Community met with the landscape architect and City staff several times in spring-summer 2009 providing input on desired amenities and preferred design.
- Community was adamant that the Wegeforth Joint Use Project be completed in one phase and insisted on a comfort station (unusual for a joint use project).
- City Councilmember Scott Sherman's office monitored the development of the project along with the finances.

### Upcoming Park Development Events

- Angier Joint Use Park – completion expected in December 2016.
- Taft Joint Use Park – Community meetings will begin soon. Community input was instrumental in making Wegeforth Joint Use Park a great park. Receive meeting notices by adding your email address to the community email list at [serramesa.org](http://serramesa.org) and/or attend the Serra Mesa Park & Recreation Council meeting the third Tuesday of the month, 6:30 pm, at the Serra Mesa Recreation Center



---

## **SERRA MESA-KEARNY MESA BRANCH LIBRARY**

### **May/June, 2016 Events/Programs**

All San Diego Public Library Locations will be Closed on Monday, May 30th in observance of Memorial Day.

**Art Exhibits** – The Friends of the Serra Mesa-Kearny Mesa Branch Library present an exhibit of work by the Associated Fine Artist in the Community Room. In May, an exhibit of Barbie Dolls and in June, an exhibit of ceramics by Taft Middle School students in the display cases.

#### **Adult Programs**

**Zumba® Gold Fitness – Wednesdays, 1:30 p.m.** The Zumba® Gold Fitness program fuses Latin rhythms with easy-to-follow moves. This class is designed for beginners and active seniors.

**Zumba® Dance/Toning Fitness –Thursdays, 1:00 p.m.** The Zumba® Fitness program fuses Latin rhythms with easy-to-follow moves. Thursday's class includes a half hour of Zumba Dance and a half hour of toning.

**Knitting Circle – Saturdays, 9:30 a.m.** Join the Knitting Circle to meet new friends and practice a traditional art form.

**eReader/Tech Clinic – Saturdays, 3:00 p.m. and Sundays, 2:00 p.m.** Learn how to download library eBooks to your device. Bring your eReader or tablet for hands on learning. There will be NO CLASS on May 28.

**May 10, 5:00 p.m. Friends of the Library Meeting.** Join members of your community to discuss ways to support the library.

**May 10, 6:45 p.m. Serra Mesa Library Book Club.** Join members of your community to discuss *The Hundred Year Old Man Who Climbed Out the Window and Disappeared* by Jonas Jonasson.

**May 13, 1:00 p.m. Your Personal Commercial.** This workshop by the San Diego Metro Career Center teaches you how to communicate your value to employers effectively and professionally.

**May 15, 2:00 p.m. Music on the Mesa: Dmitry Kirichenko.** Come and enjoy a FREE concert by local classical pianist, Dmitry Kirichenko.

**May 16, 11:00 a.m. Healthy Lifestyles.** If you or someone you know is struggling with Nutrition, Weight, Stress or Diabetes this Workshop is for you! Presented by Mary Hyde, CHHC. For more information contact 858-750-3112 or maryhyde@we-are-well.com.

**May 18, 12:00 p.m. Kearny Mesa Planning Group.** A community meeting for an organization that advises the city on land use issues.

**May 19, 3:00 p.m. Serra Mesa Village Meeting.** Join members of your community for presentations on healthy lifestyles for older adults.

**May 19, 7:00 p.m. Serra Mesa Planning Group.** A community meeting for an organization that advises the city on land use issues.

**May 22, 1:30 p.m. San Diego Folk Song Society.** Join the folk song circle and enjoy free, live music.

**May 25, 6:30 p.m. Serra Mesa Community Council.** A meeting to provide information and act as a forum for identifying and solving community problems.

---

## **SERRA MESA-KEARNY MESA BRANCH LIBRARY**

**June 10, 1:00 p.m. What to Say at Job Interviews.** This workshop by the San Diego Metro Career Center teaches you how to prepare and communicate your value in a job interview.

**June 14, 6:45 p.m. Serra Mesa Library Book Club.** Join members of your community to discuss *The Dead Wake* by Erik Larson.

**June 15, 12:00 p.m. Kearny Mesa Planning Group.** A community meeting for an organization that advises the city on land use issues.

**June 16, 3:00 p.m. Serra Mesa Village Meeting.** Join members of your community for presentations on healthy lifestyles for older adults.

**June 16, 7:00 p.m. Serra Mesa Planning Group.** A community meeting for an organization that advises the city on land use issues.

**June 19, 2:00 p.m. Music on the Mesa: Harp Concert.** Come and enjoy a FREE concert of popular music played on the harp by harpist Leah Panos.

**June 20, 11:00 a.m. Healthy Lifestyles.** If you or someone you know is struggling with Nutrition, Weight, Stress or Diabetes this Workshop is for you! Presented by Mary Hyde, CHHC. For more information contact 858-750-3112 or maryhyde@we-are-well.com.

**June 22, 6:30 p.m. Serra Mesa Community Council.** A meeting to provide information and act as a forum for identifying and solving community problems.

**June 24, 1:00 p.m. Career Assessment Tools.** Learn how to assess your best skills and value in this workshop offered by the San Diego Metro Career Center.

**June 26, 1:30 p.m. San Diego Folk Song Society.** Join the folk song circle and enjoy free, live music.

**June 27, 1:30 p.m. An Afternoon of Language and Laughter.** Join our FREE lecture by Richard Lederer, Union-Tribune language columnist and history quizmaster, and best-selling language writer.

### **Children Programs**

**Kids Night with Hopscotch Tiny Tots – Tuesdays, 4:30 p.m.** Join Ms. Kim for music, stories, arts and crafts in a program which is ideal for toddlers and preschoolers.

**Friday Morning Storytime – Fridays, 10:00 a.m.** Join Ms. Carrie every Friday morning for stories, songs, and fun!

**Chess Club – Fridays, 4:00 p.m.** Join instructors from the Lone Kings Chess Club and learn game tactics and strategies.

**May 2 & 16, 10:30 a.m. Yoga Storytime for Kids.** Toddlers will hear stories and songs while learning yoga poses.

**May 4 & 18, 4:00 p.m. Lego Builder Club.** Join us to build Lego creations that will be displayed in the library.

**May 9 & 23, 10:30 a.m. Preschool Craft.** Join us for a fun, easy-to-make children's craft.

**May 12, 19 & 26, 10:00 a.m. Music Time for Kids with Cowboy Bob.** Come dance with Cowboy Bob as he introduces music and instruments in a show appropriate for all ages.

**June 1, 4:00 p.m. Lego Builder Club.** Join us to build Lego creations that will be displayed in the library.

## **SERRA MESA-KEARNY MESA BRANCH LIBRARY**

**June 6 & 20, 10:30 a.m. Yoga Storytime for Kids.** Toddlers will hear stories and songs while learning yoga poses.

**June 9, 16, 23 & 30, 10:00 a.m. Music Time for Kids with Cowboy Bob.** Come dance with Cowboy Bob as he introduces music and instruments in a show appropriate for all ages.

**June 13 & 27, 10:30 a.m. Preschool Craft.** Join us for a fun, easy-to-make children's craft.

**June 15, 4:00 p.m. Summer Reading Program: Mad Science Show.** Mad Science presents "The Science of Sports". Come sweat, bounce, and shake your way through some awesome experiments that will show you what you never knew about the human body and the equipment we use in sports.

**June 22, 4:00 p.m. Summer Reading Program: Gaston's Puppet Show.** Puppeteer Gaston Morineau presents the classic Aesop's Fable "The Tortoise and the Hare". Who will win the classic race between the slow and steady tortoise and the speedy hare?

**June 29, 4:00 p.m. Summer Reading Program: Found Object Juggling Show.** Juggler, Michael Rayner presents a fun-filled and hilarious show for all ages. A juggling show like no other, Michael performs strange amazing feats with everyday objects!

**Apply for a Free Computer!! Computers 2 SD Kids at the Serra Mesa-Kearny Mesa Library – Classes on May 21 and June 25 at 10:00 a.m.**

The San Diego Public Library and Computers 2 SD Kids are teaming up to provide computers for families with children. Sign-up at the Serra Mesa-Kearny Mesa Branch Library starting on the 1<sup>st</sup> of each month. Volunteers will guide you through an introductory computer class at the library. Attendance at this class is required before you can receive a computer. Computers 2 SD Kids will give you a Technology Assistance Program application. They will review it and notify you whether you qualify based on your verified income.

### **Do Your Homework @ the Library!!**

Come and Do Your Homework at the Serra Mesa Library. At our homework center, students in grades K through 8 can get in-person homework help from our homework coaches. Drop in-no sign ups required. Mondays and Thursdays 3:00-6:00 p.m., Tuesday and Wednesday 3:00-7:00 p.m.

### **Summer Reading Program 2016!! June 15 to August 15**

*Read for the Win* and join the Summer Reading Program! It's free to sign up for all ages at [www.sandiegolibrary.org](http://www.sandiegolibrary.org) beginning on June 15th. Keep track of the books you read this summer with your online reading log and earn prizes for reading! Every Wednesday from June 15th through August 10th at 4:00 p.m., join us for a special Summer Reading Shows featuring clowns, magicians, animals, and more!

---

**"In the September-October 2015 edition of the Serra Mesa Observer Crunch Fitness was recognized as a sponsor of the three special events held during summer 2015. Since a donation was never received Crunch Fitness didn't sponsor these events."**

You probably wonder about the above statement. We contacted the Crunch management numerous times. We recognized Crunch in the September/October 2015 Observer and explained that SMCC attempts to be accurate in our articles. Furthermore we indicated that the above statement would be placed in the May-June 2016 Observer if we didn't receive a payment.

The local Serra Mesa Crunch manager feels bad about the lack of response from his managers.

Cindy

# SMCC Subscription Application or Renewal Form & Interest/Volunteer Survey

If you are interested in being contacted about any of the organizations listed below and/or you wish to receive a bi-monthly newsletter **or renew** your subscription, please fill out the following information. Return this form to the Serra Mesa Community Council, PO Box 23315, San Diego, CA 92193.

Last Name \_\_\_\_\_ First \_\_\_\_\_ E-mail \_\_\_\_\_  
Address \_\_\_\_\_ City \_\_\_\_\_ State \_\_\_\_\_ Zip Code \_\_\_\_\_  
Home Phone \_\_\_\_\_ Work Phone \_\_\_\_\_ Occupation \_\_\_\_\_

**Subscription Form** - Enclosed is my check payable to the Serra Mesa Community Council to subscribe at the following level:

Household (\$15) \_\_\_\_ Sponsor (\$25) \_\_\_\_ Benefactor (\$50) \_\_\_\_

**How did you hear about us?** \_\_\_\_\_

Need More Information	Want to Volunteer	Brief Description of Serra Mesa Organizations
<input type="checkbox"/>	<input type="checkbox"/>	<b>Community Council.</b> <i>Sponsors clean-ups, publishes newsletter, liaison between elected officials &amp; the community, meets 10 times/yr. Volunteers needed: Board &amp; special projects. Commitment: varies.</i>
<input type="checkbox"/>	<input type="checkbox"/>	<b>Planning Group.</b> <i>Advises the City on the Serra Mesa Community Plan and land use issues. Volunteers needed. Trained &amp; indemnified by the City. Commitment: 3.5 hours/month.</i>
<input type="checkbox"/>	<input type="checkbox"/>	<b>Recreation Council.</b> <i>Plans, promote, publicizes &amp; helps provide recreation opportunities for citizens in Serra Mesa. Volunteers needed: Council. No training needed. Commitment: 1.5 hour/month</i>
<input type="checkbox"/>	<input type="checkbox"/>	<b>Enhancement Committee.</b> <i>Sends educational letters to residents requesting code compliance. Promotes community improvement. Trained &amp; indemnified by the City. Commitment: 3 hours/month.</i>
<input type="checkbox"/>	<input type="checkbox"/>	<b>Friends of the Library.</b> <i>Provides summer reading program, extra books &amp; tapes, &amp; sponsors special library events for the Serra Mesa Library. Volunteers needed: Board. Commitment: 5 hours/month.</i>
<input type="checkbox"/>	<input type="checkbox"/>	<b>Friends of Ruffin Canyon.</b> <i>Friends of Ruffin Canyon removes invasive non native plants from the canyon and replaces them with natives.</i>
<input type="checkbox"/>	<input type="checkbox"/>	<b>Serra Mesa Food Pantry.</b> <i>Staff the Food Pantry, pick up donated food, coordinate food drives, organize community sponsors. Commitment: varies.</i>

To volunteer for one of the groups listed below call 858-565-2473.

**Churches.** *Volunteer needs, training, & commitment varies with each church.*

**Education & PTAs.** *Volunteers needed: school based parent groups, readers/listeners in the schools, & various projects at schools. Training & commitment varies with activity.*

**Sports** (Soccer, Baseball, Basketball). *Volunteers needed: referees, managers, coaches, scorekeepers, etc. Training & commitment varies with activity.*

**Youth Activities** (Girls Scouts, Boy Scouts, etc.). *Volunteers needed: leaders, sponsors, & volunteers for special activities. Training provided. Commitment varies.*

**Views concerning the present and future Serra Mesa.** Please attach a sheet with issues, suggested goals, and suggestions.

**Skills/Experience/Interests.** Sometimes an organization needs specialized help. If you wish to volunteer, then please attach a sheet with a list of your skills/experiences.

# Serra Mesa Enhancement Committee

The role of the Serra Mesa Enhancement Committee (SMEC) is to provide information, education, cooperation, and assistance in the area of City Code Compliance. After confirming a code violation SMEC sends a friendly, educational letter asking for compliance. In 90% of the cases people come into compliance and cases are not reported to the City. If you have a problem in your area, report the problem with this confidential form.

## Request for Investigation

**Return form to:** Serra Mesa Enhancement Committee,  
Post Office Box 23315, San Diego, California 92193

Please investigate this address: \_\_\_\_\_

This is the problem: (give complete details; time of day, license plate of vehicles, type of vehicles, condition of property, owner's or renter's name if known etc.)

---

---

---

---

---

(Please use back if necessary.)

Your name (will not be disclosed): \_\_\_\_\_

Date: \_\_\_\_\_ Phone: \_\_\_\_\_ Email: \_\_\_\_\_

===== for office use =====

ID# \_\_\_\_\_ Area \_\_\_\_\_ Contacted complainant \_\_\_\_\_

Complaint Referred to (specify date)	Action Steps (specify date)
_____ Code Compliance	Second Checker: No Violation, Close _____ Violation _____
_____ Police	_____
_____ Signs	1st Letter: _____
_____ Tree Division	Second Checker: No Violation, Close _____ Violation _____
_____ Vector Control	_____
_____ Vehicle Abatement	2nd Letter: _____
_____ Weeds	Second Checker: No Violation, Close _____ Violation _____
_____ Other	_____
	Thank You: _____ Reopen Previous Case: _____

***Serra Mesa Observer***  
Editor: *Ronda Adams*  
Post Office Box 23315  
San Diego, CA 92193

PRSRT STD  
US POSTAGE  
PAID  
PERMIT 0639  
SAN DIEGO CA

# Dated Material

---

## **FRIENDSHIP LUNCH OPEN TO THE COMMUNITY**

Join us for the Friendship Lunch  
Volunteers from our neighborhood offer  
the Serra Mesa community  
a soup, bread, and dessert every Wednesday noon to 1:00 p.m.

The "Friendship Lunch" has **no age limitation**

There is no cost but all are invited to bring non-perishable cans or  
packages of food for the Serra Mesa Food Pantry

Located at Mission Village Christian Fellowship 2650 Melbourne Drive 92123  
More information at 858-277-6572 or 858-278-2633