

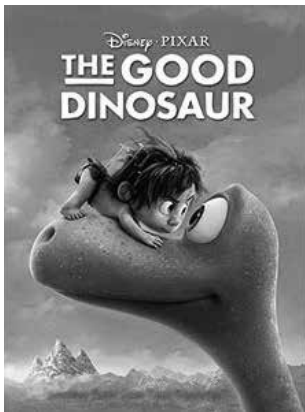


PUBLISHED BY THE SERRA MESA COMMUNITY COUNCIL

VOLUME 30, ISSUE 4 JULY / AUGUST 2016

**Join us at Cabrillo Heights Park
for free movie nights in
Serra Mesa!**

All movies will begin at dusk.



The Good Dinosaur on July 23rd

Inside Out on August 13th



Minions on September 17th



www.SerraMesa.org

You are invited to participate in the

Serra Mesa Community Council

Wednesday, July 27

No Meeting

*Serra Mesa - Kearny Mesa Library
Community Room, 9005 Aero Drive*

Serra Mesa Community Council

Wednesday, August 24

6:30 p.m.

*Serra Mesa - Kearny Mesa Library
Community Room, 9005 Aero Drive*

Neighborly People
and Friendly Businesses
Living and Working Together

Serra Mesa Community Council Board**Officers**

Carl Demas.....	(858) 565-2473*
<i>President</i>	
Diane Romita	(858) 565-2473*
<i>Vice President</i>	
Andrea Eaton.....	(858) 565-2473*
<i>Treasurer/Community Events</i>	
Cindy McIntyre	(858) 565-2473*
<i>Secretary</i>	

Board Members

Jackie Ander.....	(858) 565-2473*
<i>Friends of the Library</i>	
Debbie Campbell.....	(858)565-2473*
<i>Community Events</i>	
Jon Cima.....	(858)565-2473*
<i>SMRC</i>	
Cindy McIntyre.....	(858)565-2473*
<i>Education Committee</i>	
Tom Leech.....	(858)565-2473*
<i>Current Issues</i>	
Cindy Moore.....	(858)565-2473*
<i>Special Projects/SMPG</i>	
Annemieke Frost Hutchinson.....	(858)565-2473*
<i>Neighborhood Watch/Community Events</i>	
Jennifer St. Clair.....	(858)565-2473*
<i>Pantry, Garden, Village Coordinator</i>	
Terry O'Regan.....	(858)565-2473*
<i>Local Business Coordinator</i>	

Appointed Positions

Myra Webb.....	(858)565-2473*
<i>Subscription Records</i>	
Ronda Adams.....	(858)565-2473*
<i>Observer Editor</i>	
Melissa Cima.....	(858)565-2473*
<i>Observer Staff/Education</i>	
Cindy McIntyre.....	(858)565-2473*
<i>Observer Staff</i>	
Marge Demas.....	(858)565-2473*
<i>Mailing Coordinator</i>	
Brad Beyenhof.....	(858)565-2473*
<i>Webmaster</i>	
Robin Rivera.....	(858)565-2473*
<i>Message Coordinator</i>	
Pat Brownyard.....	(858)565-2473*
<i>Welcome to Serra Mesa</i>	
Elizabeth Rice.....	(858)565-2473*
<i>Utility Box Coordinator</i>	

*Contact by calling (858) 565-2473 & leaving a message.

Serra Mesa Observer is published bimonthly by the Serra Mesa Community Council with a circulation of approx 800
Annual fees: Household...\$15 Sponsor...\$25 Benefactor...\$50

For subscriptions and ads, call (858) 565-2473
Council doesn't endorse ads.

Articles, Ideas, & Upcoming Events for the Observer
are welcome. Editor reserves right to edit articles.

For articles, e-mail Ronda Adams - rondakadams@msn.com

Deadline: September / October Edition...August 19th

P.O. Box 23315, San Diego, CA, 92193
<http://www.serramesa.org>
communitycouncil@serramesa.org

SERRA MESA COMMUNITY GROUPS

Serra Mesa Community Council	(858) 565-2473
e-mail: communitycouncil@serramesa.org	
Serra Mesa Planning Group	(858) 565-2473
e-mail: smpg@serramesa.org	

ELECTED OFFICIALS

Board of Education Kevin Beiser	(619) 725-5550
City Councilmember Scott Sherman	(619) 236-6677
Mayor Kevin Faulconer	(619) 236-6330
County Supervisor Ron Roberts	(619) 531-5544
State Assemblymember Toni Atkins	(619) 645-3090
State Senator Marty Block	(619) 645-3133
Governor Jerry Brown	(619) 525-4641
U.S. Representative Susan Davis	(619) 448-5201
U.S. Senator Dianne Feinstein	(619) 231-9712

CALENDAR OF COMING EVENTS

July 12	Friends of Serra Mesa-Kearny Mesa Library 5:30 p.m., Serra Mesa-Kearny Mesa Library, Sudberry Room
July 16	Hearing Loss Association of America (San Diego) 10:30 a.m., Mission Village Christian Fellowship
July 19	Serra Mesa Recreation Center Council Meeting 6:30 p.m., 9020 Village Glen Drive
July 21	Serra Mesa Planning Group 7 p.m., Serra Mesa-Kearny Mesa Library, Community Room
July 27	Friends of Ruffin Canyon 5:30 p.m., Serra Mesa-Kearny Mesa Library, Community Rm
Aug 6	Friends of Ruffin Canyon Cleanup 9:00 a.m., Shawn Avenue entrance to Ruffin Canyon
Aug 16	Serra Mesa Recreation Center Council Meeting 6:30 p.m., 9020 Village Glen Drive
Aug 18	Serra Mesa Planning Group 7 p.m., Serra Mesa-Kearny Mesa Library, Community Room
Aug 20	Hearing Loss Association of America (San Diego) 10:30 a.m., Mission Village Christian Fellowship
Aug 24	Friends of Ruffin Canyon 5:30 p.m., Serra Mesa-Kearny Mesa Library, Community Rm
Aug 24	Serra Mesa Community Council 6:30 p.m., Serra Mesa-Kearny Mesa Library, Community Rm
Sept 3	Friends of Ruffin Canyon Cleanup 9:00 a.m., Shawn Avenue entrance to Ruffin Canyon

*Serra Mesa Enhancement Committee meetings -
write to P.O. Box 23315, San Diego, CA, 92193.*

In This Issue...

SMCC Community Forums	1
Community Phone Numbers, Calendar	2
President's Message	3
Connections, Gethsemane Lutheran Summer Concerts	4
Free Classes SDCE, SM Rec Center, Serra Mesa Village	5
Serra Mesa Planning Group News	6
Important Phone Numbers, Senior Fitness Testing, SMEC	7
Jones Elementary School 2nd Annual Science Fair	8
Market on the Mesa, Serra Mesa 92123 T-shirt sale	9
Yard Makeover	10
Franklin Ridge Road - Adam Gardner	11
Market on the Mesa Celebrates Grand Opening	12
SMCC New and Renewed Members	13
Juarez Elementary and Safe Routes to School	14
What's New at the Village, Juniors TOC picture	16
Serra Mesa-Kearny Mesa Branch Library	17
A New Look for the Serra Mesa Observer	Back
SMPG PEIR Position Statement, Civita Concert & Movies	Inserts

PRESIDENT'S MESSAGE



I find it really rewarding at this particular time when our Country is facing so many challenges and problems that Serra Mesa Residents are able to put aside our differences in political beliefs, religious orientations, and racial differences to come together for the common good. We are all volunteers with a unified interest to improve our living conditions and neighborhood by offering our services and funds. It is a neighborhood worth living in and while not perfect, our direction is to improve and welcome others of like minds. Should you find yourself wanting to become part of our efforts, please let us know as we have many projects on the board including a Senior Center which will offer a place to come and communicate, exercise classes, health classes, participation in hobbies and games, computer training, watch movies, and even provide a ceramics class.

Serra Mesa is such an unbelievable neighborhood when it comes to friendly neighbors willing and able to get involved to improve our lives. Perhaps you have heard that our Farmer's Market has come to fruition and will open on July 6. The location is the Islamic Center on the corner of Greyling and Sandrock. The day will be Wednesday and right now it looks like from 3:00 p.m. – 7:00 p.m. We can thank Debbie Lou and her team for collecting the required start up fees and coordinating all the details that were required to make this a reality. Also thank you to the citizens of Serra Mesa for contributing the needed funds for the start-up which will guarantee one year of fruits and vegetables every week.

I would also like to thank Karl Doering of SMC GO. org (Serra Mesa Community Garden & Orchard) for coordinating the provision of between 200-300 lbs. of fresh vegetables every week for our Serra Mesa Pantry. This is done with the help of some 50+ gardeners who grow produce for the pantry. If you have a tree that produces fruit that you are not able to use, harvest, or would like to donate to the pantry, please leave message for Karl at 858-278-2633 x 12. If you are not aware, the Serra Mesa Pantry is open at 10:00 a.m. – 2:00 p.m. every Wednesday and 2nd Saturday of every month. The pick-up point is Mission Village Christian Fellowship at 2650 Melbourne. (Across from Juarez Elementary School). The pantry is proud to report assistance to over 100 families each week who reside in Serra Mesa (92123). We also would like to report all of the elementary, middle schools, and Kearny High School for their contribution throughout the year for their donations of can goods for the pantry. If you are going to one of our "Movies in the Park", for which there are 3 this year, we only ask for a donation for the pantry. You will be seeing more of this from our Movie in the Park Committee. All of the above is provided free of charge to our residents.

Don't forget our Friendship Lunch each Wednesday from 12:00 p.m. – 1:00 p.m. at Mission Village Christian Fellowship Hall at 2650 Melbourne Drive. This is the same location as our Pantry which is open from 10:00 a.m. – 2:00 p.m. Come for lunch and pick up some fresh produce at the pantry.

To get involved, leave a message for me at 858-565-2473. We welcome your input and comments. Let us know how we are doing. Tell us what you would like to see. Check out our website at: www.serrmesa.org.

Carl J. Demas

“Connections”

The Serra Mesa Village, a neighborly network of seniors for seniors, meets to “Connect” from 3-5pm on the third Thursday of each month at the Serra Mesa/Kearny Mesa Library on Aero. We connect with one another, we connect to very interesting people within Serra Mesa on topics of interest to most seniors, and we connect to the resources of the whole San Diego community for people in their aging years. In the past few months, we had a presentation on current scams targeting seniors, a report on the County’s Aging Summit, and a passionate presentation on succulents.

We also go on an outing on the first Thursday of every month to an interesting place. The August outing is to Old Town. Meet at the library at 10:00 a.m. on August 4th to carpool. You’ll have time to explore and then have lunch at one of the restaurants there or, if you prefer to pack your own lunch, outside in the central plaza.

We have a games and conversation on the 2nd and 4th Wednesday of each month from 1-3 p.m. Currently those are happening at Gethsemane Church, 2696 Melbourne Drive, but we will be moving to the Serra Mesa Rec Center, 9020 Village Glen Drive, soon. We are very excited to be developing a relationship with the Rec Center Director and staff.

Finally, we are establishing an interactive website at www.serramesavillage.org. Check it out.

Gethsemane Lutheran Church
Summer Concert Series
by Andy and Debbie Attwood

On July 30, and August 27 there will be Gospel Music Concerts at 5 p.m. followed by a Salad Bar Supper at 6 p.m. For information or reservations, call 858-277-6572 or email church@gethsemanesd.org.



Improve your home.
Improve your bottom line.

Jason LaMell | Broker
 619.300.5697
www.improvereadtyus.com
 CalBRE#01861043

*Instead of selling
 your home “As-is”,
 let us remodel to get
 you more money!*

- We **remodel** your home
- We **sell** it fast
- You keep the **profit**
 (No out-of-pocket costs)

Put our expertise to work
 for you! Call to find out
 how. 619.300.5697

Endodontics
 Prosthodontics

Crowns

Cosmetics
 Implants

WILLIAM E. LARSON, D.M.D.
 AERO DENTISTRY

3755 Murphy Canyon Rd. #D
 San Diego, CA 92123

Tel: (858) 277-2999
 Fax: (858) 277-3086

ABLE PLUMBING AND DRAIN SERVICE

CA LIC. 681475
 LIABILITY INSURED

SCOTT FIORI
PLUMBER92123@GMAIL.COM
BBB MEMBER

8431 FIRESIDE AVE
 SAN DIEGO CA 92123

858 277 1153
 CELL 619 985 8204

Serra Mesa Village

...a neighborly network of seniors for seniors
...sponsored by the Serra Mesa Community Council

Monthly Regular Activities

3rd Thursday, 3-5pm Connect with others at the Meeting Room at the Serra Mesa Library; speakers and information for seniors and those who care about them.

1st Thursday, 10am-2/3pm Trips to interesting places in San Diego; meet at the Library to carpool.

2nd and 4th Wednesday, 1-3pm Social time for games, conversation, crafts, and whatever; meets at Gethsemane Meeting Room, 2696 Melbourne Dr.

1st and 3rd Mondays, 1-2:30pm Coordinating Board (open to all) at Gethsemane Meeting Room, 2696 Melbourne Dr.

Contact us:

www.serramesavillage.org
(resources/information/etc.)

serramesavillage10@gmail.com

858-565-2473 (Leave a message)

P.O. Box 23315, San Diego, CA 92103

Serra Mesa Recreation Center

9020 Village Glen Dr.
(858) 573-1408

1:00 - 8:00 p.m. Monday, Tuesday, Thursday
1:00 - 9:00 p.m. Wednesday
2:00-6:00 p.m. Friday
10:00 a.m. - 4:00 p.m. Saturday
Closed Sunday.

Community Sports Information:

A.Y.S.O. Soccer: (858) 268-5880

N.Y.S. Soccer : (858) 973-6101

SD United Soccer: (858) 457-4625

Serra Mesa Senior Softball:
(858) 279-4283

Serra Mesa Little League: (858) 279-8361

Serra Mesa Recreation Council meets on
July 19 & August 16 at 6:30 p.m.

Helping San Diegans Stay Competitive in the Job Market

Free Classes



Business, Computers
and Information
Technology

Class schedule
available online
sdce.edu

SAN DIEGO
CONTINUING
EDUCATION



CABRILLO POOL SERVICE

Mike Nelson

Free Estimates!

619-756-
2087

P.O. BOX 23726

SAN DIEGO CA 92193-0726 cabrillopoolservice@outlook.com



Gethsemane Lutheran Church



Gloria Espeseth
Pastor

www.gethsemanesd.org

2696 Melbourne Drive
San Diego, CA 92123

Worship 9:30am
(858) 277-6572

SERRA MESA PLANNING GROUP NEWS

The Serra Mesa Planning Group (SMPG) is officially recognized by the City and makes recommendations on land use issues to the City. SMPG meets the third Thursday of the month, 7 pm, at the Serra Mesa-Kearny Mesa Library, 9505 Aero Dr. Next meetings: July 21 and August 18. To contact us, email smpg@serramesa.org.

Summary of May 19 and June 16 Meetings

Annual Officer Election. New officers are Bob Crider, Chair; Bob McDowell, Vice-Chair; and Bryce Niceswanger, Secretary.

Draft Programmatic Environmental Impact Report (PEIR) for the Serra Mesa Community Plan Amendment Street Connection presented by Seth Litchney, Senior Planner, City of San Diego. The audience was encouraged to send questions and comments to the City.

Franklin Ridge Road Connection Subcommittee – The main purpose of the Franklin Ridge Road Connection Subcommittee was to draft a letter in response to the draft PEIR, posted at www.sandiego.gov/planning/programs/ceqa/. The subcommittee met four times with at least ten participants at each meeting. In evaluating the draft PEIR the focus was on identifying the inconsistencies, specific impacts, errors, omissions of data or analyses, and conclusions not based on evidence. The subcommittee passed a motion on June 9 to approve the draft letter with edits.

Special thanks to subcommittee participants: Efrain Conrique, A Jean Fabish, Adam Gardner, Lesley Marples, Cindy Moore, Bryce Niceswanger, Susan Raines, Marilyn Randall, Gabriela Surpi, GERALYN White, and Gus Wirth. This group spent many hours reading, researching, and evaluating.

Draft Response Letter – Residents from Hye Park (a condo complex on Mission Center Road which is at the southern border of Serra Mesa) asked that additional environmental issues affecting them be added to the letter. On June 16, SMPG unanimously approved the letter and agreed to add a Hye Park environmental issues item. The final letter (27 pages long) was sent to the City and is posted at www.serramesa.org.

Summary/Position Statement – On June 16, SMPG voted unanimously to approve this statement, which was sent to the City and is included in this Observer edition and posted at www.serramesa.org. Special thanks to Bryce Niceswanger for drafting this document.

Next Step in the Process – A corrected traffic study was added to the PEIR and the deadline for public comments extended to July 5. Staff is required to write a response to all comments. Staff has indicated that responses won't be available until two weeks prior to the Planning Commission hearing, which may not be scheduled until in the fall. The final decision maker will be the City Council.

Future Agenda Items

July 21 – Potential “Keep San Diego Moving Forward” measure. This ballot measure is designed to provide a dedicated source of local revenue to invest in our region's transportation future. Possible action item.

August 18 - Project at 2395 Cardinal Drive which is currently under construction. Information item only.

IMPORTANT PHONE NUMBERS

Abandoned Vehicles &		Police Department - Eastern Division	(858) 495-7900
Police Non-Emergency	(619) 531-2000	Post Office	(800) 275-8777
Airport Noise - Montgomery Airfield	(858) 573-1436	Poison Control Center	(800) 876-4766
Animal Control	(619) 767-2675	Rape /Domestic Violence Hotline	(858) 272-1767
Bus & Trolley Schedules	(619) 233-3004	RSVP (Retired Seniors Volunteer Patrol)	(858) 495-7990
Canyon Cleanup	(619) 533-4411	SDG&E Emergencies	(800) 411-7343
Child Abuse Hotline	(858) 560-2191	Senior Citizen Services	(619) 236-6905
City Clerk - Docket Information	(619) 533-4000	Serra Mesa Library	(858) 573-1396
Crime - General Business	(619) 531-2000	Serra Mesa Recreation Center	(858) 573-1408
Crime Stoppers	(619) 235-8477	Sidewalk Repair	(619) 527-7500
Dead Animal Removal stay on the line)	(858) 694-7000	Stadium Manager	(619) 641-3101
Emergency Information - Earthquake	(858) 565-3490	Stadium Security & Noise	(619) 641-3150
Fallen Trees	(858) 527-7500	Stolen Property/Bicycles - To Report	(619) 531-2000
Fire Department - Non-emergency	(619) 533-4300	Storm Drain Misuse	(619) 235-1000
Flies & Vermin	(858) 694-2888	Street Repair - Faded signs, pavement	(619) 527-7500
Graffiti	(619) 525-8522	Traffic Signal Maintenance	(619) 527-8650
Hazardous Chemicals & Waste	(858) 694-7000	Water Emergencies - City & Private	(619) 515-3525
Health Violations	(619) 338-2222	Weeds	(619) 533-4444
Kearny High Alumni Association	(619) 699-0886	Zoning/Permits - Questions & Violations	(619) 446-5000
Litter - City Owned/Private Property	(858) 492-5055		
Meals On Wheels	(619) 260-6110		
Neighborhood Code Compliance	(619) 236-5500		
Barking Dogs, Code Violations, Noise, Safety			

SERRA MESA ENHANCEMENT COMMITTEE

Send any code compliance complaints that you would like SMEC to pursue to P.O. Box 23315, San Diego, CA 92193 or serramesaenhancementcommittee@hotmail.com. Our procedure is to send letters to the resident asking for voluntary compliance. We send letters for excessive litter, excessive weeds, graffiti, illegally parked vehicles, illegal signs, and other violations (e.g., noise, fences, home business) on an as needed basis.

Fitness Testing for Seniors

Thursday August 25 at 1 pm at the Serra Mesa Rec Center

Fitness testing is a way to show you where your strength and weaknesses are in the area of physical fitness. The tests are simple, easy to perform and it takes about 30 minutes to do the testing. It will be done as a group so it will be fun as well. After the testing is done I will connect with you and give you your results. This is a great way to help you determine what type of exercise you should be doing to increase your physical fitness or maintain it. This is a free service so I hope many of you will take advantage of this opportunity. I can be reached for questions about the testing via email at fitkatinsd@aol.com or text at 858 768 1917 - Katrina

Jones Elementary School 2nd Annual Science Fair!!!

On Tuesday, June 6th, 90 plus Kindergarten through 5th grade Jones Elementary School students participated in the 2nd Annual Science fair! Student projects were creative, relevant, educational, and very impressive!

Participating students were required to choose a scientific question to answer or problem to solve. First, students had to research the question or problem using the library, internet, and other sources that would provide the background information he or she needed to formulate a hypothesis and design an experiment. After researching the topic, students created a plan, performed the experiment, and drew his or her conclusions. Next, students were required to write a report to summarize their research. Finally students presented their results to the school community using a display board.

There are so many benefits of having a science fair. Science fair projects provide students another avenue of learning more about topics of personal interest to them while also demonstrating both factual knowledge in written reports and procedural knowledge through the research process itself. Together, prior knowledge and newly acquired knowledge enable students to generate, analyze, and assess the impact of their findings, as well as connect what they learn to experiences beyond the science fair project.

There are so many benefits of having a science fair. In preparing for a science fair students are involved in *active learning* (learning by doing) and *inquiry* which are very effective learning strategies. Students are also required to communicate when presenting their findings to an audience in a concise and coherent way. Finally, science fair projects help develop confidence and competence in students which are two attributes that all successful students need.

Congratulations to this year's winners:

Kindergarten - Cole D'Acquisto – **First Place**

First – Addison Rader – **First Place**

First – Adam Anthony– **Second Place**

Second - Patrick Murphy – **First Place**

Second – Kasia Mulholland – **Second Place**

Third - Halle Jones and Paul Macapinlac – **First Place**

Third – Lexie Wilson- **Second Place**

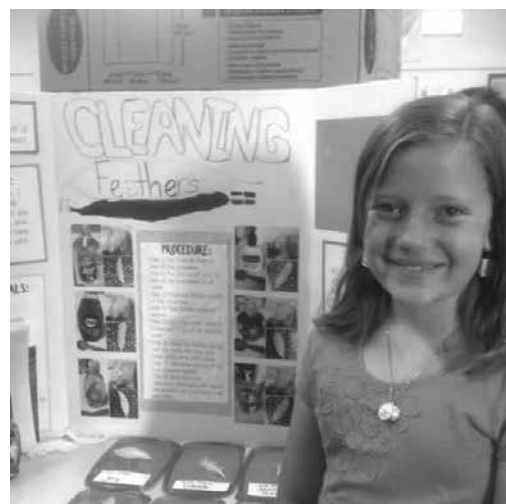
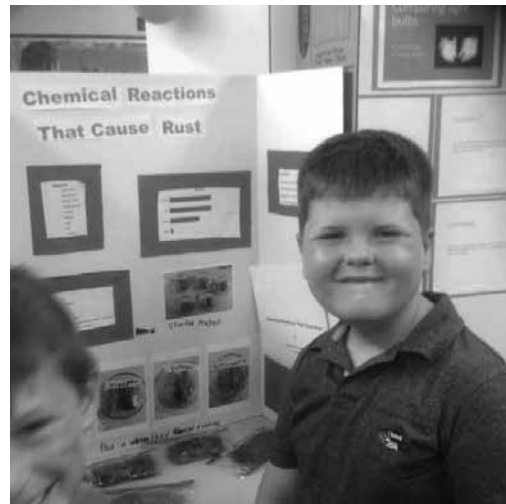
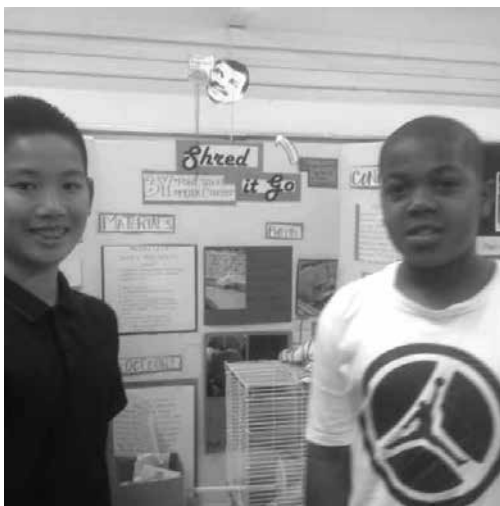
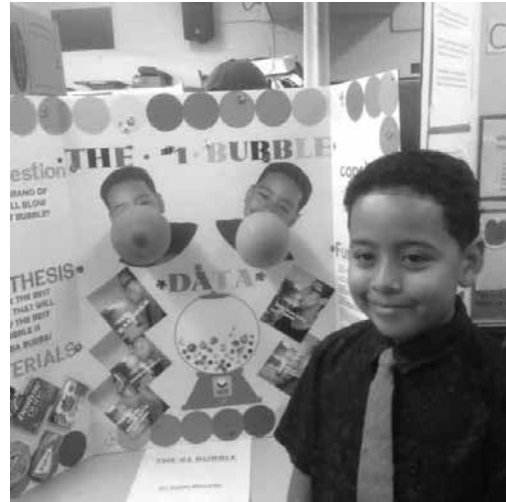
Fourth – Alex Hayward – **First Place**

Fourth – Sydney Brown and Cameron Corkhill – **Second Place**

Fifth – Allison Smurthwaite – **First Place**

Fifth – Kaylee Foyer and Shelby Mangrum – **Second Place**

Jones Elementary School 2nd Annual Science Fair!!!



Yard Makeover

Are you considering a landscape makeover project? Last year we decided to rid our backyard of the many kinds of grass that semi- thrived in it – especially Bermuda grass. After a thorough investigation we settled on the solarization method. It was a cheap and easy method that worked! Our grass is still dead a year later.

Solarization - Summarized/Copied from <http://ucanr.edu/sites/YCMG/files/187332.pdf>

Solarization heats the soil by covering it with clear plastic for four weeks or more during the hottest part of the year. If you are trying to kill Bermuda grass, you need to solarize the soil for at least six weeks.

Process

- Choose sunny, windless day in the hottest part of the year.
- Mow grass close to ground, about ½ inch, and remove clippings.
- Wet soil thoroughly to depth of at least 12 inches.
- Immediately cover the soil with 1.5 or 2 mils clear plastic. Clear plastic is preferred because it traps the heat while black plastic absorbs and deflects the heat. If removing Bermuda grass, extend the plastic 2 feet beyond the runners to ensure the infested area is covered.
- Bury the edges of the plastic with soil to keep it as close to the soil surface as possible. (Note: We did not do an adequate job of burying all the edges so there were a few places where the Bermuda grass didn't die and we used an alternate method.)
- Keep water off the plastic as this will lower the temperature.
- Check plastic for punctures to ensure the cover will maintain highest temperatures. Seal holes with plastic tape.
- Leave plastic in place for 4-6 weeks or longer, depending on the type of grass.
- Remove plastic. The dead grass can be used for mulch.

Landscape Makeover Series

Information on free classes offered by the County is at <http://landscapemakeover.watersmartsd.org/>. We took a four-session evening class located in Clairemont. The class included information on soil, landscape design, turf identification and removal, plant selection, project planning and design, irrigation, and rainwater harvesting, and a consultation with a landscape design expert. We left the class with an attractive (personal bias), waterwise design that meets our needs.

If you don't want to commit to four classes, other free classes and videos are offered. When we first signed up the classes were filled and we were wait-listed. For us, that worked out well because by the time we attended the class our grass was dead and ready for fall planting.

Dear Residents of Serra Mesa,

Search "Serra Mesa" at Change.org and sign the petition rejecting the Franklin Ridge Road street connection. Despite being defeated four times already, the Franklin Ridge Road connection debate has reared its ugly head once again; this time in the form of a seemingly benign community plan amendment. The city has initiated a programmatic environmental impact report (PEIR) to study the effects of adding the Franklin Ridge Road connection to our community plan. If implemented the road is poised to connect Via Alta and Franklin Ridge Road in Civita to Phyllis Place in Serra Mesa funneling heavy commercial traffic from Mission Valley to the 805 through residential neighborhoods. As a result there will be significant congestion on residential surface streets creating a dangerous situation for the pedestrians and bicyclists in our sleepy community. There will be substantial and unmitigable delays at the 805 south and north ramps of 31-43 minutes. Currently we enjoy these ramps with under 15 minutes of delay even at peak times and will continue to do so through the year 2035 without the connection as shown by the data. Seemingly the only beneficiaries of the connection are the developers in Mission Valley who will pay lower impact fees if they can channel traffic out of their development areas. In spite of the current climate the city has spent \$250,000 of our tax dollars to create this PEIR. Even this tax-dollar funded PEIR shows a significantly negative impact to traffic, noise, and pollution. However the city can still approve the project, they just legally need to document the positive and negative effects before the City Council can vote on it. We need to voice our opposition now before it is too late. Serra Mesa opposes the connection currently and historically. Join us at Change.org (Search "Serra Mesa") in telling the city that we do not want the connection and urge them to put our tax dollars to work solving traffic problems not creating more problems.

<https://www.change.org/p/planningceqa-sandiego-gov-reject-the-serra-mesa-community-plan-amendment-street-connection-project-no-265605>

Sincerely,

Adam Gardner

Holy Angels Byzantine Catholic Church

2235 Galahad Road, San Diego, CA 92123

Divine Liturgy on Sunday at 9 a.m.

Eastern European Ethnic Foods

Available in the Church Hall

Open 10 a.m. to 2 p.m.—Friday-Tuesday

Closed on Wednesday and Thursday

Please call before coming to buy the food.

858-268-3458

Marvin Sloben

Photographer

619.239.2828

Msloben@san.rr.com

3026 North Park Way • San Diego, CA 92104



From Concept to Completion

18 years strong Serra Mesa

Video Production Company

Venue Filming*Music Video Production*Video Montages

Media/Marketing Relations

Ask for Liz: emlmedia@yahoo.com



St. Columba Parish

3327 Glencolum Drive

San Diego, CA 92123

(858) 277-3863

Sunday Mass

7:30, 9:30 a.m. & 5:30 p.m.

Saturday

8:00 a.m. & 5:30 p.m.

Mon-Fri.

7:00 a.m.

Holy Days

Please call the church for schedule



Market on the Mesa Celebrates Grand Opening

We finally have a place again to buy fresh produce within Serra Mesa. The community lost its last major supermarkets in the early 2000s and has seen smaller independently-owned markets come and go. Since then, residents have been hungering for a market and now one has arrived. Market on the Mesa, Serra Mesa's new farmers market, opened on July 6 and will be held once a week on Wednesdays from 3pm to 7pm. Located at 3333 Sandrock Rd., the market will focus on selling locally-grown fruits and vegetables, both organic and conventionally-grown. Other types of vendors may include arts and crafts and specialty prepared foods. Parking is available in the south lot and the market is located in the north lot.

Debbie Lou, who moved to Serra Mesa in 2012, conceived of the idea for starting a farmers market to address the community's frustration with not having any nearby grocery stores. Lou formed the Wholesome Neighborhood Project, a nonprofit consisting of Astrid Brown, Gloria Roma, Terri Strait, and Diana Wendel, that raised more than \$11,000 via the online crowdfunding site Kickstarter and nearly \$2000 via check donations for the market's start-up fund. Market on the Mesa was selected by Kickstarter as a "Project We Love" – a special designation Kickstarter staff gives to projects they are especially enthusiastic about.

"Not only will we finally have a place to buy fresh produce within Serra Mesa, a community that sadly fits the definition of a food desert, I also envision the farmers market to be a fun and social gathering place where neighbors can strengthen and build new bonds" says Lou. We are immensely grateful for the help and contributions from so many Serra Mesa residents and are especially thankful for the support and sponsorship of the Serra Mesa Community Council, the Afghan Community Islamic Center, the Serra Mesa Recreation Council, and Gethsemane Church.

Market on the Mesa is contracting with Brian Beevers of Brian's Farmers Markets to operate and manage the market. Brian's markets offer both organic and conventionally grown produce, accept EBT payments, and offer memberships to an innovative CSA (community supported agriculture) program where you can sign up to get a fresh box of locally-grown, pesticide- and herbicide-free produce each week. For timely updates and more information about Market on the Mesa, please visit <https://www.facebook.com/serramesafarmersmarket/>

We hope to see you there!

Please contact Debbie Lou at smfarmersmarket@outlook.com with any questions or comments about the market.

***Serra Mesa Community Council Welcomes
May / June New and Renewed Subscribers***

Serra Mesa Community Council Welcomes May/June
New and Renewed Subscribers

Carlos & Evangeline Abeyta

Maggie Brett & Wayne Adamson

June Angus

Nancy Bauer

Audrey Blevins **

Ernie Buck

Eudora Carlson

Pauline Casey

Jerome & Hildegard Class

Thomas Conners

Steve & Leana Dillon *

Rachel Evans

Kathy Farnum **

Jo Ann Ghio

Bertha Gifford

Mary Ann Sanzone-Harm & Greg Harm *

Stanley Jarosin

Jean Jenkins

Richard W. Jones *

The Kirk Family

Richard & Diane Lorkowski

Elbert McCune *

Robert McDowell *

Charles & Diane Moore

Dorothy O'Connell

Anne Palmer

Beverly Patch

Yvonna Prime

Siggi Rachinger & Marie Wierzbic

William Romer

Ron & Linda Sanders

Floyd & Ruth Sedlund

Richard & Dolores Shick

James Skidmore *

Patricia Smith

Wanda Smith

Keith & Louise Wilcox

Donation: **Benefactor *Sponsor

Observer Renewal

When it is time to renew your Observer, the renewal date is highlighted and stamped, "to be renewed." Also, a postcard will be mailed and, if possible, a phone call is made to remind you. It is greatly appreciated if you pay as soon as you notice it's time to renew.

Maybe you have a special neighbor that you'd like to say "thank you" to, or maybe you have a new neighbor that you'd like to say "welcome." We highly recommend giving a subscription to the Observer (six editions/year). A post card will be sent to the recipient.

Please fill out the enclosed form and send it with your check to P.O. Box 23315,
San Diego, CA. 92193.

Juarez Elementary and Safe Routes to School-To Safer Streets and Healthier Communities

- We have had a very successful 1.5+ years engaged with this school around all the fun and benefits of walking, biking, rolling to school and beyond and making healthy choices. Plus we focused on intergenerational engagement as well bringing youth and older adults together which adds an extra layer of richness to Safe Routes to School programming.
- Many thanks to Juarez Principals (Marques and Oluwa), staff (including SRTS Coordinator Santillan), teachers, parents, grandparents, SDPD officers and Retired Senior Volunteer Patrol (RSVP) members, neighbors, and Serra Mesa community members for supporting our ACTIVities and joining in !!!
- Activities included:
 - Walk audit and engineering improvements
 - Establishing a Volunteer Safety Patrol (VSP) team
 - International Walk to School Day
 - Walk + Bike safety education, “Be Safe + Be Active” message tags
 - Reading in the classrooms
 - Building a physical walking school bus
 - A total of 12 Walking School Buses since October 2015
 - Helmet and umbrella giveaways
 - Additional safety and encouragement giveaways
 - Rady SRTS outreach and engagement during school events like Benito Juarez Day
 - Building a physical walking school bus
 - And more !!!!

Why a Walking School Bus?

- Teaches students that walking is a viable ACTIVE transportation option
- Reduces traffic congestion around the school
- Promotes healthy habits
- Learn pedestrian safety with adult guidance & supervision
- Arrive at school alert and ready to learn!



* Thank you Juarez Guardians (Volunteer Safety Patrol team) for your eyes on the street to make sure our streets are safer! If you are interested to join in next school year, please contact VSP team lead Joanne Snyder at 2dancingcats@gmail.com

Juarez Elementary and Safe Routes to School-To Safer Streets and Healthier Communities

Juarez students on all 12 buses !!! (left to right) Sara Dumont, Julia Dumont, Jackson Felder, Hailey Jones, Megan Jones, and Mia Ceja. VSP team members pictured - Joanne Snyder and Yvonne Bissell.



What's New at the Village

We have wonderful news to report for the Village. We will finally have a Senior Center located at the Serra Mesa Recreational Center at 9020 Village Glen Drive. We will be utilizing the back room which has a meeting room, a tv room, and a hobby room. We will be utilizing this space and will be giving you a schedule of events as they develop.

Also at the Serra Mesa Recreation Center if you are interested in free exercise classes, we have good news for you. Currently we are meeting on Tuesdays and Thursdays from 8:30 a.m. – 10:00 a.m. with exercise classes provided free of charge by Healthier Living. You can get more information about this by calling 858-573-1408 or on www.HealthierLivingSD.org. Just come and join us if you want to improve your endurance, balance, strength, flexibility, and have Fun. All ability levels are welcome. Our first class was June 14th and it was a blast.

Mark your calendars for the following:

Village Connection on the 3rd Thursday of every month at 3:00 p.m. - 5:00 p.m. at the Serra Mesa/Kearny Mesa Library 9004 Aero Drive.

Friendship Lunch every Wednesday 12:00 p.m. - 1:00 p.m. at Mission Village Christian Fellowship Friendship Hall 2650 Melbourne Drive

Pantry Fresh Vegetable Pickup every Wednesday from 10:00 a.m. - 2:00 p.m. at Serra Mesa Food Pantry 2650 Melbourne Drive

Travel Experience 1st Thursday every month, meet at Library at 10:00 a.m. for ride sharing to event.

Social Event 2nd and 4th Wednesday at Gethsemane Sunroom 2696 Melbourne Drive at 1:00 p.m. - 3:00 p.m.

Come and meet some nice people who are happy to see you and have some fun.

The Village Board

.....



SERRA MESA-KEARNY MESA BRANCH LIBRARY

July/August, 2016 Events/Programs

All San Diego Public Library Locations will be Closed on Monday, July 4th in observance of Independence Day.

Adult Programs

Art Exhibits – The Friends of the Serra Mesa-Kearny Mesa Branch Library present an exhibit of work by the St. Columba Catholic School in the Community Room. An exhibit of ceramics by Taft Middle School students in the display cases.

eReader/Tech Clinic – Saturdays and Sundays, 2:00 p.m. Learn how to download library eBooks to your eReader or computer. Quick tips & helpful hints to get the most out of your downloads. Bring your own eReader, tablet, or laptop for hands on learning. (Except July 23rd)

Knitting Circle – Saturdays, 9:30 a.m. Join the knitting circle. Improve your skills in this traditional art form.

Zumba® Dance/Toning Fitness –Thursdays, 1:00 p.m. The Zumba Fitness program fuses Latin rhythms with easy-to-follow moves. Thursday's class includes a half hour of Zumba Dance and a half hour of toning.

Zumba® Gold Fitness – Wednesdays, 1:30 p.m. The Zumba Gold Fitness program fuses Latin rhythms with easy-to-follow moves. This class is designed for beginners and active seniors.

July 8, 1:00 p.m. Resume Strategies. This workshop by the San Diego Metro Career Center shows you how to build a professional, attention-grabbing resume.

July 12, 5:00 p.m. Friends of the Library Meeting. Join members of your community to discuss ways to support the library.

July 12, 6:45 p.m. Serra Mesa Library Book Club. Join members of your community to discuss *Daughter of Fortune* by Isabel Allende

July 17, 2:00 p.m. Music on the Mesa: Bassett Brothers. Come and enjoy a FREE concert by guitar duo the Bassett Brothers of classical and contemporary music.

July 18, 11:00 a.m. Healthy Lifestyles. If you or someone you know is struggling with Nutrition, Weight, Stress or Diabetes this Workshop is for you! Presented by Mary Hyde, CHHC. For more information contact 858-750-3112 or maryhyde@we-are-well.com.

July 20, 12:00 p.m. Kearny Mesa Planning Group. A community meeting for an organization that advises the city on land use issues.

July 21, 3:00 p.m. Serra Mesa Village Meeting. Join members of your community for presentations on healthy lifestyles for older adults.

July 21, 7:00 p.m. Serra Mesa Planning Group. A community meeting for an organization that advises the city on land use issues.

July 22, 1:00 p.m. Cover Letters and More. This workshop by San Diego Metro Career Center shows you how to create impressive, attention-getting cover letters.

July 24, 1:30 p.m. San Diego Folk Song Society. Join the folk song circle and enjoy free, live music.

July 25, 1:30 p.m. OASIS Monday at the Library: A World of Percussion & Classic Folk Tunes. Join us for a FREE, fun and easy interactive music session with music history specialist Chris Burns. Mr. Burns will

SERRA MESA-KEARNY MESA BRANCH LIBRARY

bring you a world of music: beautiful Native American melodies, South American and African samples, the music of the Renaissance, Bach, Beethoven, Irish dance tunes, country, jazz, and more.

July 30 & 31 Friends of the Serra Mesa Library Annual Big Book Sale:

Saturday, July 30, 9:30 a.m.-2:00 p.m. & Sunday, July 31, 12:30 p.m.-4:00 p.m.

Support the Serra Mesa Library while shopping for gently-used adults, teens, and children's books, movies and CDs. Your donations benefit your library. Hope to see you there!

August 9, 6:45 p.m. Serra Mesa Library Book Club. Join members of your community to discuss *The Glass Castle* by Jeanette Walls.

August 12, 1:00 p.m. Your Personal Commercial. This workshop by the San Diego Metro Career Center teaches you how to communicate your value to employers effectively and professionally.

August 15, 11:00 a.m. Healthy Lifestyles. If you or someone you know is struggling with Nutrition, Weight, Stress or Diabetes this Workshop is for you! Presented by Mary Hyde, CHHC. For more information contact 858-750-3112 or maryhyde@we-are-well.com.

August 17, 12:00 p.m. Kearny Mesa Planning Group. A community meeting for an organization that advises the city on land use issues.

August 18, 3:00 p.m. Serra Mesa Village Meeting. Join members of your community for presentations on healthy lifestyles for older adults.

August 18, 7:00 p.m. Serra Mesa Planning Group. A community meeting for an organization that advises the city on land use issues.

August 21, 2:00 p.m. Music on the Mesa: Buena Vista SoCal Club. Come and enjoy a FREE concert of Cuban and Latin American music.

August 22, 1:30 p.m. OASIS Monday at the Library: The Real Pirates of the Caribbean. Join us for a FREE interesting talk by Dr. Dave Roberts, anthropologist. The stories behind the Golden Age of piracy are explored without the Hollywood hype or inventions. From Drake, the explorer turned pirate and then back to knighted gentleman, to the feared Captain Roberts, aka, Black Bart. Dr. Dave Roberts, a direct descendant of the infamous Pirate Roberts, shares the "other side" of the story behind the history books. This program is for kids ages 6 to 106!

August 24, 6:30 p.m. Serra Mesa Community Council. A meeting to provide information and act as a forum for identifying and solving community problems.

August 26, 1:00 p.m. Salary Negotiation. Learn how to effectively negotiate your salary in this workshop offered by the San Diego Metro Career Center.

August 28, 1:30 p.m. San Diego Folk Song Society. Join the folk song circle and enjoy free, live music.

Children Programs

Kids Night with Hopscotch Tiny Tots – Tuesdays, 4:30 p.m. Except 7/5 and 7/12. Join Miss Kim for music, stories, arts and crafts in a program which is ideal for toddlers and preschoolers.

Friday Morning Storytime – Fridays, 10:00 a.m. Join Ms. Carrie every Friday morning for stories, songs, and fun!

July 11 & 25, 10:30 a.m. Preschool Craft. Join us for a fun, easy-to-make children's craft.

SERRA MESA-KEARNY MESA BRANCH LIBRARY

July 14, 21 & 28, 10:00 a.m. Music Time for Kids with Cowboy Bob. Come dance with Cowboy Bob as he introduces music and instruments in a show appropriate for all ages.

July 18, 10:30 a.m. Yoga Storytime for Kids. Toddlers will hear stories and songs while learning yoga poses.

July 6, 4:00 p.m. Summer Reading Program: Little Catbird. Little Catbird and Chili Lime host a feel-good music show with original music, classic sing-alongs, dancing and puppets!

July 13, 4:00 p.m. Summer Reading Program: Sparkles the Clown. Sparkles the Clown come to give us a hilarious and whimsical magic and bubble show!

July 20, 4:00 p.m. Summer Reading Program: Craig Newton Musical Performance. Musician Craig Newton presents his "Halftime Music Show" featuring music you would hear at sporting events played on a variety of different instruments.

July 27, 4:00 p.m. Summer Reading Program: Wild Wonders Animal Show. Wild Wonders presents "Animal Athletes," a look at the natural athletes and what special athletic talents they possess.

August 1 & 15, 10:30 a.m. Yoga Storytime for Kids. Toddlers will hear stories and songs while learning yoga poses.

August 8, 22 & 29, 10:30 a.m. Preschool Craft. Join us for a fun, easy-to-make children's craft.

August 11, 18, & 25, 10:00 a.m. Music Time for Kids with Cowboy Bob. Come dance with Cowboy Bob as he introduces music and instruments in a show appropriate for all ages.

August 3, 4:00 p.m. Summer Reading Program: It's Book Time with Ronald McDonald. Ronald McDonald is here with a show filled with puppetry, music and magic to introduce "book time", the time we set aside each day to read.

August 4, 4:00 p.m. Summer Reading Program. Symphony Storytime. Join us for a special storytime with musicians from the San Diego Symphony. Cellist Mary Szanto and bassoonist Leyla Zamora perform music to accompany stories.

August 10, 4:00 p.m. Summer Reading Program: Living Coast Discovery Center Animal Show. The Living Coast Discovery Center presents "Totally Tide Pools". Learn all about local wild animals that are living in our ocean and how they have adapted to living in San Diego waters.

Apply for a Free Computer!! Computers 2 SD Kids at the Serra Mesa-Kearny Mesa Library – Classes on July 23 and August 27

The San Diego Public Library and Computers 2 SD Kids are teaming up to provide computers for families with children. Sign-up at the Serra Mesa-Kearny Mesa Branch Library starting on the 1st of each month. Volunteers will guide you through an introductory computer class at the library. Attendance at this class is required before you can receive a computer. Computers 2 SD Kids will give you a Technology Assistance Program application. They will review it and notify you whether you qualify based on your verified income.

Summer Reading Program 2016!! June 15 to August 15

Read for the Win and join the Summer Reading Program! It's free to sign up **for all ages** at www.sandiegolibrary.org beginning on June 15th. Keep track of the books you read this summer with your online reading log and earn prizes for reading! Every Wednesday from June 15th through August 10th at 4:00 p.m., join us for a special Summer Reading Shows featuring clowns, magicians, animals, and more!

Serra Mesa Observer
Editor: *Ronda Adams*
Post Office Box 23315
San Diego, CA 92193

PRSRT STD
US POSTAGE
PAID
PERMIT 0639
SAN DIEGO CA

Dated Material

A New Look for the Serra Mesa Observer

We are looking to replace the Observer with a new format with color and a real newspaper feel. The Serra Mesa Council Board is looking to replace the Observer with a more current newsy and informative format before the end of the year. As our subscriptions have matured to a level that indicates that a new look is desired, we hope to have a replacement available for your review as soon as August. We will be having a new name for our publication and you may be the person that comes up with our new name of the new paper. We will be taking names at our Farmer's Market Grand Opening on July 6th at the Islamic Center at Sandrock and Greyling between 3-7 PM. Hope to see you there.

Serra Mesa Board of Directors

In accordance with our mandate under Article II, Section 1 of Council Policy 600-24 to make recommendations to the City Council, Planning Commission, and City staff concerning the preparation of or amendment to a land use plan, the Serra Mesa Planning Group hereby presents the following comments for inclusion in the staff report to the Planning Commission and City Council on the Proposed Serra Mesa Community Plan Amendment Street Connection (Franklin Ridge Road), Project No. 265605 SCH No. 2012011048.

SERRA MESA PLANNING GROUP'S SUMMARY/POSITION STATEMENT

1. SMPG recommends AGAINST amending the Serra Mesa Community Plan to include the street connection for the following reasons:
 - The emergency connection is redundant and is neither required nor necessary.
 - The connection will not improve overall traffic flow in the study area and, in fact, will degrade it.
 - The proposed Amendment has been rejected numerous times by Planning Commission (2004 and 2008) and City Council (2005).
 - The connection is strongly opposed by the affected Community.
2. SMPG recommends NOT to amend the Serra Mesa Community Plan to include a street connection on the basis that the PEIR does not meet project objectives and shows a significant negative environmental impact on traffic. PEIR inadequately studied noise and pollution impacts (e.g., sensitive receptors not considered).

The PEIR is NOT complete and NOT in compliance with CEQA. Alternatives are not comprehensive. Information is contradictory in multiple locations, fundamentally inadequate and conclusory.

- Emergency, pedestrian and cyclist access already exists on Kaplan Drive, and more will be provided with the trail through the park on Phyllis Place connecting the two communities.
 - Mission Center Road and Mission Village Drive provide interconnectivity between the two communities.
3. SMPG recommends the proposed Community Plan Amendment be DENIED. The CPA does not meet proposed goals and does not benefit the residents of either community.
 4. SMPG recommends that the Mission Valley Community Plan be REVISED to exclude the Franklin Ridge Road Connection as it is not mitigable below a significant level and negatively impacts: air quality, transportation/circulation, and noise (operational) in both communities.

EMERGENCY ROAD CONNECTION ANALYSIS FLAW

When the City Council requested the initiation of this CPA in 2008, their discussion was heavily focused on public safety, emergency evacuation, and fire department access. Unfortunately, no one who was so authorized informed the Council during this discussion that there is already an emergency-only connection at Kaplan Drive from Civita to Serra Mesa designed into the project.

Issues City Council directed staff to analyze	Findings
1. Whether police and fire response time would be improved with road connection	Police – “Would not likely increase” (PEIR, p. 7-14) Fire – “Potentially reducing” (PEIR, p. 7-14) but PEIR didn’t consider Kaplan Drive
2. Whether the road connection could serve as an emergency evacuation route	Evacuation route already exists at Kaplan Drive and Aperture Circle.
3. Whether it is feasible to make the road available for emergency access only	Emergency access already exists at Kaplan Drive and Aperture Circle
4. Whether pedestrian and bicycle access would be improved by the street connection	Pedestrian and bicycle access already exist with Kaplan Drive and planned trail through Phyllis Place Park

STREET CONNECTION IMPACTS

- Required 1.3 acre linear park along Phyllis Place divided in two by connection – safety issues *
- Required to relocate high-pressure gas line*
- Impacts MSCP, constructed through sensitive habitat, particularly coastal sage scrub
- Impacts 56 multifamily retirement units located across from street connection*
- May require redesign of driveways of City View Church located across from street connection*
- Blind curve in front of City View Church creating poor sight distance which can't be corrected*
- Steep grade (developer indicates maximum 10%) requiring deviations from the City's Street Design Manual (refer to City Council Resolution 304295) not considered in noise and air quality studies*
- Requires Murray Ridge Rd from I-805 NB ramp to Mission Center Dr to be restriped to 4-lane collector (PEIR, p. 5.2-27); at the minimum requires bike lane removal (reconfiguration limited by road width)
- Mitigation requires removal of bicycle lanes or houses on both sides of Murray Ridge to Pinecrest Ave but not recommended so "impact would remain significant and unavoidable" (PEIR, p. 5.2-27)

TRAFFIC IMPACTS

Street connection "might relieve congestion on local arterial streets and freeway segments" (PEIR, p. 3-1). This isn't proven by the traffic studies.

Impact Areas	Without Connection	With Connection	Results With Connection
Phyllis Pl	ADTs: 2,420	ADTs: 34,540	Significant Increased Traffic - Worse
Franklin Ridge/Via Alta	LOS: D	LOS: F	More traffic - Worse
I-805 Bridge	LOS: E	LOS: F	65% More Vehicles - Worse
I-805 on-ramps	Delays < 15 min	Delays 31-43 min	Significant Delays - Worse
I-805 freeway	LOS: F	LOS: F	"would remain significant and unavoidable" ¹ - Unchanged
*ADT=Average Daily Trips, *LOS=Traffic Level Of Service, *F=forced flow, extreme congestion, ¹ (PEIR, p. 5.2-30-31)			

Already planned and approved, scheduled for construction fall 2016: Phase 1 of SR-163 and Friars Road Interchange Project will alleviate severe traffic delays on Friars Road (City website)*

MISSION VALLEY COMMUNITY PLAN INCONSISTENCY

The Sand and Gravel Re-use Development section of the Mission Valley Plan (p. 56) states "Streets serving new development should be connected to the road network and not to major streets serving residential areas in the mesas." This statement is consistent with the Serra Mesa Community Plan.

SERRA MESA COMMUNITY OPPOSITION

The surveys conducted in the community over the years indicate overwhelming opposition to the street connection. The Serra Mesa Planning Group and members of the community have repeatedly expressed strong opposition to the street connection in writing and in person at all stages of the development process for Quarry Falls/Civita, and continue to express their opposition to the proposed Community Plan Amendment.

*Not mentioned and/or discussed in the PEIR

JOIN US FOR SOME CIVITA-STYLE SUMMERTIME FUN.

Come out to the Temporary Park this summer to hear some great local music and enjoy family friendly movies on the big screen. The park is located at the corner of Civita Blvd and Via Alta.

Sights. Sounds. Summer. Civita.



Film Fridays

Friday Movie Nights 7:45 pm

- June 17 | Star Wars - the Force Awakens
- July 15 | Zootopia
- August 19 | Back to the Future

Sundown Sundays

Sunday Concerts 5:30-7 pm

- June 26 | Nancarrow
- July 24 | Siren's Crush
- August 28 | Todo Mundo

