



PUBLISHED BY THE SERRA MESA COMMUNITY COUNCIL

VOLUME 34, ISSUE 2     MARCH / APRIL 2020



[www.SerraMesa.org](http://www.SerraMesa.org)

You are invited to participate in the  
**Serra Mesa Community Council**  
Wednesday, March 25  
6:30 p.m.

*Serra Mesa - Kearny Mesa Library  
Community Room, 9005 Aero Drive*

**Serra Mesa Community Council**  
Wednesday, April 22  
No Meeting

*Serra Mesa - Kearny Mesa Library  
Community Room, 9005 Aero Drive*

Neighborly People  
and Friendly Businesses  
Living and Working Together

**Serra Mesa Community Council Board - Officers**

Carl Demas.....(858) 565-2473\*  
*President*  
 Cindy Moore.....(858) 565-2473\*  
*Vice President*  
 Andrea Eaton.....(858) 565-2473\*  
*Treasurer/Community Events*  
 Cindy McIntyre .....(858) 565-2473\*  
*Secretary*

**Board Members**

Tom Leech.....(858)565-2473\*  
*Current Issues*  
 Cindy McIntyre.....(858)565-2473\*  
*Education Committee*  
 Jackie Ander.....(858) 565-2473\*  
*Friends of the Library*  
 Rebecca Moreno .....(858)565-2473\*  
*Local Business Coordinator*  
 Jon Cima.....(858)565-2473\*  
*SMRC/SMPPAG*  
 Yusuf Nazar.....(858)565-2473\*  
*Special Projects/SMPPG*

**Appointed Positions**

Myra Webb.....(858)565-2473\*  
*Subscription Records*  
 Ronda Adams.....(858)565-2473\*  
*Observer Editor*  
 Melissa Cima.....(858)565-2473\*  
*Observer Staff/Education*  
 Cindy McIntyre.....(858)565-2473\*  
*Observer Staff*  
 Marge Demas.....(858)565-2473\*  
*Mailing Coordinator*  
 Geralyn White.....(858)565-2473\*  
*Neighborhood Awareness*  
 Colin Dowling .....(858)565-2473\*  
*Webmaster*

**Key Serra Mesa Volunteers**

Bryce Niceswanger.....(858)565-2473\*  
*SMPPG President*  
 Monica Fuentes .....(858)565-2473\*  
*Friends of Ruffin Canyon*  
 Luisa Johnson .....(858)565-2473\*  
*Serra Mesa Food Pantry*  
 Karl Doering .....(858)565-2473\*  
*SM Community Garden & Orchard*

*\*Contact by calling (858) 565-2473 & leaving a message.*

**SERRA MESA COMMUNITY GROUPS**

Serra Mesa Community Council (858) 565-2473  
 e-mail: communitycouncil@serramesa.org  
 Serra Mesa Planning Group (858) 565-2473  
 e-mail: smpg@serramesa.org

**ELECTED OFFICIALS**

Board of Education Kevin Beiser (619) 725-5550  
 City Councilmember Scott Sherman (619) 236-6677  
 Mayor Kevin Faulconer (619) 236-6330  
 County Supervisor Nathan Fletcher (619) 531-5544  
 State Assembly Member Shirley N. Weber (619) 531-7913  
 State Senator Toni G. Atkins (619) 645-3133  
 Governor Gavin Newsom (619) 525-4641  
 U.S. Representative Susan Davis (619) 280-5353  
 U.S. Senator Dianne Feinstein (619) 231-9712

**CALENDAR OF COMING EVENTS**

|        |                                                                                                             |
|--------|-------------------------------------------------------------------------------------------------------------|
| Mar 10 | Friends of Serra Mesa-Kearny Mesa Library<br>5:30 p.m., Serra Mesa-Kearny Mesa Library, Sudberry Room       |
| Mar 17 | Serra Mesa Recreation Center Council Meeting<br>6:30 p.m., 9020 Village Glen Drive                          |
| Mar 19 | Serra Mesa Village Connection<br>3:30 p.m., Serra Mesa-Kearny Mesa Library, Community Rm                    |
| Mar 19 | Serra Mesa Planning Group<br>7 p.m., Serra Mesa-Kearny Mesa Library, Community Room                         |
| Mar 21 | Hearing Loss Association of America (San Diego) Meeting<br>10:30 a.m., Mission Village Christian Fellowship |
| Mar 25 | Friends of Ruffin Canyon<br>5:30 p.m., Serra Mesa-Kearny Mesa Library, Community Rm                         |
| Mar 25 | Serra Mesa Community Council<br>6:30 p.m., Serra Mesa-Kearny Mesa Library, Community Rm                     |
| Apr 4  | Friends of Ruffin Canyon Cleanup<br>9:00 a.m., Shawn Avenue entrance to Ruffin Canyon                       |
| Apr 16 | Serra Mesa Village Connection<br>3:30 p.m., Serra Mesa-Kearny Mesa Library, Community Rm                    |
| Apr 16 | Serra Mesa Planning Group<br>7 p.m., Serra Mesa-Kearny Mesa Library, Community Room                         |
| Apr 18 | Hearing Loss Association of America (San Diego) Meeting<br>10:30 a.m., Mission Village Christian Fellowship |
| Apr 21 | Serra Mesa Recreation Center Council Meeting<br>6:30 p.m., 9020 Village Glen Drive                          |
| Apr 22 | Friends of Ruffin Canyon<br>5:30 p.m., Serra Mesa-Kearny Mesa Library, Community Rm                         |
| No Mtg | Serra Mesa Community Council<br>Serra Mesa-Kearny Mesa Library, Community Rm                                |
| May 2  | Friends of Ruffin Canyon Cleanup<br>9:00 a.m., Shawn Avenue entrance to Ruffin Canyon                       |

*Serra Mesa Enhancement Committee meetings -  
 write to P.O. Box 23315, San Diego, CA, 92193.*

**Serra Mesa Observer** is published bimonthly by the

Serra Mesa Community Council with a circulation of approx 800  
 Annual fees: Household...\$15 Sponsor...\$25 Benefactor...\$50

For subscriptions and ads, call (858) 565-2473 Council doesn't endorse ads.

**Articles, Ideas, & Upcoming Events for the Observer**  
 are welcome. Editor reserves right to edit articles.

For articles, e-mail Ronda Adams - rondakadams@msn.com

**Deadline:** May / June 2020 Edition...April 21st.

P.O. Box 23315, San Diego, CA, 92193

<http://www.serramesa.org> communitycouncil@serramesa.org

**In This Issue...**

|                                                        |    |
|--------------------------------------------------------|----|
| SMCC Community Forums                                  | 1  |
| Community Phone Numbers, Calendar                      | 2  |
| President's Message                                    | 3  |
| New Housing Regulations                                | 4  |
| Important Phone Numbers, Business Cards                | 5  |
| SMRC, Business Cards                                   | 6  |
| Serra Mesa Village, State of the Art Ranger Station... | 7  |
| Skilled Negotiations Save Taxpayers' Money             | 8  |
| Franklin Ridge Road Connection Lawsuit Appeal          | 9  |
| Housing at the Old Library Site, SMPG                  | 11 |
| SDG&E Pipeline Project in Serra Mesa, ActOne           | 12 |
| VA Hospital Annex on Aero                              | 13 |
| Serra Mesa Village Calendars                           | 14 |
| Serra Mesa / Kearny Mesa Branch Library                | 16 |
| Serra Mesa Little League                               | 18 |
| Why a Census?                                          | 20 |
| Serra Mesa Food Pantry                                 | 22 |

## **PRESIDENT'S MESSAGE**



It is so encouraging when the community comes together as they did at our Candidate Forum in January. We had over 100 people fill the gym at Cubberley Elementary School as the League of Women Voters provided a program involving our four candidates for the City Council 7th District primary election. We found out that we have four very qualified and well-intentioned candidates who will make our decision difficult. I am convinced that any of them will make fine representatives and will serve our community well. Questions were prepared from the floor and presented to each of the candidates. The board is thinking of another in September for the two finalists from the March 3rd primary.

As you know, life in Serra Mesa will get more complicated as we prepare for SDSU-West, which is in the final negotiation between SDSU and the City. Also, the Franklin Ridge Road Connection Lawsuit Appeal has shown that the court ruled against the environmental lawsuit. It is possible with the scope of the two projects that they will be occurring at the same time, which will make getting around Serra Mesa more difficult. The fulfillment of our worst nightmare all for progress.

So, you ask, what can we do? What are some of our options? We can ask questions of our candidates and make sure that we elect those who do what is in our best interests. We can get involved with local organizations that are attempting to limit what our elected officials intend to inflict on us. One of those organizations is your Community Council, who along with the Serra Mesa Planning Group, wants to ensure that our elected officials are informed and working on our behalf. We intend to ensure that you are informed and know what is going on. Our medium is the Observer, our local Newsletter, which is now in color and bigger and better than ever. It is available online at [www.serramesa.org/smcc/observer-newsletter/](http://www.serramesa.org/smcc/observer-newsletter/) I hope that you will save this address and refer to it often to find out what is going on in Serra Mesa. Another link is to sign up for email notices on our homepage, where you will be notified of Serra Mesa Events. Hopefully, you are already receiving them, if not just enter your email address, and you will get notices of events

Lastly, congratulations to our newly elected board including Cindy Moore, VP; Andrea Eaton, Treasurer; Cindy McIntyre, Secretary, Jackie Ander, Friends of the Library; Jon Cima, Rec Council; Tom Leech, Current Issues; Rebecca Moreno, Local Business Coordinator; Yusuf Nazar, Special Projects; and

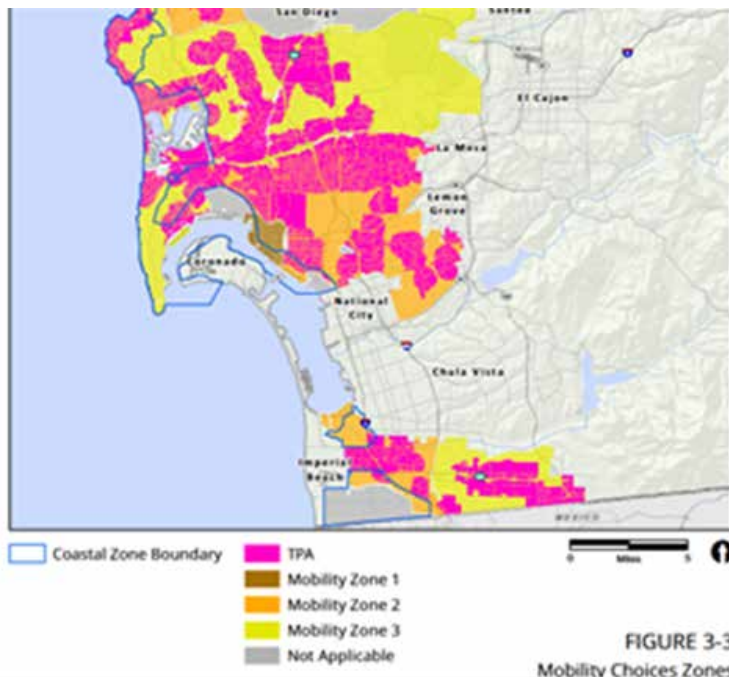
Carl Demas, President



## New Housing Regulations?

The Complete Communities Program, proposed by Mayor Faulconer, includes amendments to the City's Land Development Code. It consists of a Housing Program described [HERE](https://www.sandiego.gov/planning/programs/completemunities/housingsolutions) (<https://www.sandiego.gov/planning/programs/completemunities/housingsolutions>) and a Mobility Choices Program, described [HERE](https://www.sandiego.gov/planning/programs/mobility/mobilitychoices) (<https://www.sandiego.gov/planning/programs/mobility/mobilitychoices>). Access the Program Environmental Impact Report (PEIR) via the Housing Program website. Comments are due by March 12.

**Housing Program:** Allows development projects additional square footage and building height beyond what is allowed in the base zone through a ministerial process if developer provides affordable housing and contributes towards neighborhood improvements. The proposed project acreage eligible for participation in Serra Mesa is 313 acres.



**Mobility Program:** Incentivize development within City's TPAs and urban areas (Mobility Zones 1 and 2). The proposed project acreage where improvement could occur in Serra Mesa is 748 acres. Designations for Serra Mesa are primarily TPA and Zone 3 (PEIR, p. 75 of 476). According to the PEIR development will occur in the TPAs.

**Impacts of the Complete Communities Program:** The program allows for overriding of height limits, setback requirements, and maximum density levels in TPAs (extracted from [HERE](https://www.jameslamattery.com/mayor-faulconers-sb50-for-the-city-of-san-diego/), <https://www.jameslamattery.com/mayor-faulconers-sb50-for-the-city-of-san-diego/>). Proposed new regulations are described [HERE](https://www.sandiego.gov/sites/default/files/ch14art03division10_draft_20191212.pdf) ([https://www.sandiego.gov/sites/default/files/ch14art03division10\\_draft\\_20191212.pdf](https://www.sandiego.gov/sites/default/files/ch14art03division10_draft_20191212.pdf)).

## **IMPORTANT PHONE NUMBERS**

|                                              |                |                                         |                |
|----------------------------------------------|----------------|-----------------------------------------|----------------|
| <b>Abandoned Vehicles &amp;</b>              |                |                                         |                |
| Police Non-Emergency                         | (619) 531-2000 | Police Department - Eastern Division    | (858) 495-7900 |
| Airport Noise - Montgomery Airfield          | (858) 573-1436 | Post Office                             | (800) 275-8777 |
| Animal Control-Incorporated S.D.             | (619) 299-7012 | Poison Control Center                   | (800) 876-4766 |
| Bus & Trolley Schedules                      | (619) 233-3004 | Rape /Domestic Violence Hotline         | (858) 272-1767 |
| Canyon Cleanup                               | (619) 533-4411 | RSVP (Retired Seniors Volunteer Patrol) | (858) 495-7990 |
| Child Abuse Hotline                          | (858) 560-2191 | SDG&E Emergencies                       | (800) 411-7343 |
| City Clerk - Docket Information              | (619) 533-4000 | Senior Citizen Services                 | (619) 236-6905 |
| Crime - General Business                     | (619) 531-2000 | Serra Mesa Library                      | (858) 573-1396 |
| Crime Stoppers                               | (619) 235-8477 | Serra Mesa Recreation Center            | (858) 573-1408 |
| Dead <b>Animal Removal</b> stay on the line  | (858) 694-7000 | Sidewalk Repair                         | (619) 527-7500 |
| Emergency Information - Earthquake           | (858) 565-3490 | Stadium Manager                         | (619) 641-3101 |
| Fallen Trees                                 | (858) 527-7500 | Stadium Security & Noise                | (619) 641-3150 |
| Fire Department - Non-emergency              | (619) 533-4300 | Stolen Property/Bicycles - To Report    | (619) 531-2000 |
| Flies & Vermin                               | (858) 694-2888 | Storm Drain Misuse                      | (619) 235-1000 |
| Graffiti                                     | (619) 525-8522 | Street Repair - Faded signs, pavement   | (619) 527-7500 |
| Hazardous Chemicals & Waste                  | (858) 694-7000 | Traffic Signal Maintenance              | (619) 527-8650 |
| Health Violations                            | (619) 338-2222 | Water Emergencies - City & Private      | (619) 515-3525 |
| Kearny High Alumni Association               | (619) 699-0886 | Weeds                                   | (619) 533-4444 |
| Litter - City Owned/Private Property         | (858) 492-5055 | Zoning/Permits - Questions & Violations | (619) 446-5000 |
| Meals On Wheels                              | (619) 260-6110 |                                         |                |
| Neighborhood Code Compliance                 | (619) 236-5500 |                                         |                |
| Barking Dogs, Code Violations, Noise, Safety |                |                                         |                |



**\*From Concept to Completion\***  
 18 years strong Serra Mesa  
 Video Production Company  
 Venue Filming\*Music Video Production\*Video Montages  
 Media/Marketing Relations  
 Ask for Liz: [emlmedia@yahoo.com](mailto:emlmedia@yahoo.com)

*Marvin Sloben*  
 Photographer

**619.239.2828**

[Msloben@san.rr.com](mailto:Msloben@san.rr.com)

3026 North Park Way • San Diego, CA 92104

**Holy Angels Byzantine Catholic Church**  
 2235 Galahad Road, San Diego, CA 92123

**Divine Liturgy on Sunday at 9 a.m.**

**Eastern European Ethnic Foods**

**Available in the Church Hall**  
 Open 10 a.m. to 2 p.m.—Friday-Tuesday  
 Closed on Wednesday and Thursday  
 Please call before coming for the food.  
 858-268-3458



**St. Columba Parish**

3327 Glencolum Drive  
 San Diego, CA 92123  
 (858) 277-3863

[www.stcolumbasandiego.com](http://www.stcolumbasandiego.com)

|             |                                     |
|-------------|-------------------------------------|
| Sunday Mass | 7:30, 9:30 a.m. & 5:30 p.m.         |
| Saturday    | 8:00 a.m. & 5:30 p.m.               |
| Mon-Thurs.  | 7:00 a.m.                           |
| Fri.        | 8:15 a.m.                           |
| Holy Days   | Please call the church for schedule |



**IMPROVE**  
— REALTY —

*Improve* your home.  
*Improve* your bottom line.

Jason LaMell | Broker  
619.300.5697  
www.improverealtyus.com  
CalBRE#01861043

*Instead of selling  
your home "As-is",  
let us remodel to get  
you more money!*

- We **remodel** your home
- We **sell** it fast
- You keep the **profit**  
(No out-of-pocket costs)

Put our expertise to work  
for you! Call to find out  
how. 619.300.5697

## Serra Mesa Recreation Center

9020 Village Glen Dr.  
(858) 573-1408

1:00 - 8:00 p.m. Monday, Tuesday, Thursday  
1:00 - 9:00 p.m. Wednesday  
2:00-6:00 p.m. Friday  
10:00 a.m. - 4:00 p.m. Saturday  
Closed Sunday.

**Community Sports Information:**  
A.Y.S.O. Soccer: (858) 268-5880  
N.Y.S. Soccer : (858) 973-6101  
SD United Soccer: (858) 457-4625  
Serra Mesa Senior Softball:  
(858) 279-4283  
Serra Mesa Little League: (858) 279-8361

Serra Mesa Recreation Council meets on  
March 17 & April 21 at 6:30 p.m.

Endodontics      Crowns      Cosmetics  
Prosthodontics      Implants

**WILLIAM E. LARSON, D.M.D.**  
AERO DENTISTRY

3755 Murphy Canyon Rd. #D      Tel: (858) 277-2999  
San Diego, CA 92123      Fax: (858) 277-3086



**Gethsemane  
Lutheran Church**

**Pastor Karla Seyb-Stockton**

2696 Melbourne Drive  
San Diego, CA 92123  
858-277-6572  
www.gethsemanesd.org

Cell: 858-883-8038  
E-Mail: karla.seyb.stockton@me.com  
Worship: 8:00, 9:30 a.m.



You're not alone dealing with hearing loss – yours or a loved one's. Twenty percent of Americans have it. Join us for friendship, support and lots of "how to" information. Plus, we provide captions so you won't miss a word!

**What:** Hearing Loss Meeting  
**When:** 10:30 a.m. 3<sup>rd</sup> Sat of month, Jan to May and Sept to Dec. Check website for details.  
**Where:** Mission Village Christian Fellowship  
2650 Melbourne Drive  
San Diego, CA 92123  
**Cost:** FREE  
<http://www.hearinglosssandiego.org/>

**CABRILLO POOL SERVICE**  
For A Sparkling Clean Pool!




**MIKE NELSON**  
OWNER/OPERATOR

Text/Phone 619-756-2087      **Free Estimates!!**  
cabrillopoolservice@outlook.com      P.O. BOX 23726  
SAN DIEGO CA 92193





Serra Mesa has had a Senior Organization called the Serra Mesa Village since 2014. We are a group of folks that are aged 55 and over. The objective of the Village Movement is to provide purpose, recreation, and companionship for people who want to age in place while remaining in their current homes. We are a community-based organization under the umbrella of the Serra Mesa Community Council and, therefore, a non-profit organization, so any dues or donations are tax exempt.

We are not affiliated with any church, as this is a community based social organization to help fill senior years with activities and events.

Should you or anyone in your household or neighborhood be 55 or over, we would like to extend an invitation to join our group.

Carl Demas, President of the Serra Mesa Village Board.

Serra Mesa Village, P.O. Box 23315, San Diego, CA 92193, (858 )565-2473

---

## **State-of-the-Art Ranger Station Opens at Mission Trails Regional Park**

Scott Sherman

Recently, I had the pleasure of attending the grand opening a new 5,000 square foot state-of-the-art ranger station at MTRP. This important park investment will give rangers improved resources and facilities to better protect the park and engage with park visitors.

In addition to the new ranger station, public artwork by acclaimed local artist Roman de Salvo was unveiled. The artwork, Fountain Mountain, consists of a large boulder with trail-like channels carved into its surface. A functioning drinking fountain fixture rises out of the highest point of the boulder, and water flows through the array of tiny trails in serpentine paths down the slopes of the boulder. The artwork is inspired by the many trails at MTRP.

Mission Trails Regional Park has a special place in my heart. As a native San Diegan, Mission Trails was basically my backyard and playground even before it became an official park. I am glad we have invested in improving public safety for this important regional treasure.

MTRP is a jewel in the San Diego region and is one of the largest urban parks in the country, consisting of over 8,000 acres over 11 square miles. MTRP has more than sixty miles of hiking, mountain biking, and equestrian trails, a rock-climbing area, a stunning 14,000-square-foot Visitor and Interpretive Center, and the Kumeyaay Lake Campground.

I encourage Serra Mesa residents will be able to visit this historic park soon and enjoy the recent investment made to this natural treasure. For more information regarding the park, please visit [www.mtrp.org](http://www.mtrp.org).

## Skilled Negotiations Save Taxpayers' Money

By City Attorney Mara W. Elliott

As your City Attorney, I advise the City Council, defend the City in litigation, civilly and criminally prosecute violations of the law, and protect taxpayer dollars so that the money can be used to advance the interests of our communities.



When it comes to litigation, you might picture lawyers waging a dramatic battle in a courtroom trial. However, a skilled negotiator can often find a way to avoid a costly trial by working out a settlement that is acceptable to both sides, thereby saving a tremendous amount of time and money – your money.

Deputy City Attorneys are trained to assess liability and obtain fair outcomes for taxpayers when the City is at fault. I'd like to recognize some of those attorneys and to highlight the positive outcomes they reached on behalf of our citizens.

- In 2018, a man filed a lawsuit to halt the Rock 'n' Roll Marathon because of noise associated with the event. Deputy City Attorney Dana Fairchild successfully defended the City by persuading the judge to deny the requested injunction.
- Last year, the same citizen threatened to bring another lawsuit. With help from the City's Special Events Department, Dana worked with the resident to address his concerns. The diplomatic efforts paid off – the parties created a plan to abate the noise, the popular event went forward as planned, and the City avoided a new lawsuit.
- Last year, Deputy City Attorney Lynn Beekman negotiated the dismissal of a lawsuit over the City's denial of a homeowner's application to get title to the City's unused public rights-of-way that ran in front of, and behind, his home. The view out his front window of a "dying" tree on the City's right-of-way proved to be the issue that concerned him most. The City's arborist determined that the tree was struggling but did not need to be replaced. The homeowner disagreed. He argued his case, without a lawyer, with great passion and intensity. After much discussion about possible alternatives to litigation, the parties resolved the case. The resident agreed to waive the costs and replace the tree at no cost to the City.
- In 2017, nine homeless people filed a federal class-action lawsuit alleging the City violated their constitutional rights through enforcement of its Encroachment Ordinance, which prohibits persons from obstructing the public right-of-way with their belongings. The City argued that the belongings impede the City's ability to keep the streets safe and clean for all; however, the homeless individuals said they had nowhere else to store their belongings.
- The judge suggested the parties to the litigation attend a ride-a-long with the City's Homeless Outreach Team (also known as the HOT Team). The judge and lawyers spent a summer morning in the East Village with the HOT Team and toured the Alpha Project Bridge Shelter to see how many storage facilities the City provides to homeless individuals. This field trip was an essential step in finding common ground.
- City Attorneys Marni von Wilpert and Dave Abad worked with the plaintiffs to craft an agreement requiring the City to open a third transitional storage facility for the homeless. In addition, police who are in contact with a homeless individual who has violated the ordinance must offer services, including offering a bed or storage bin, before an arrest can be made. While the City paid reasonable attorney's fees to the plaintiff's lawyer, no other monetary damages were awarded, putting an end to a complicated and expensive case.

These are just some examples of how your Deputy City Attorneys are working hard every day, often behind the scenes, to resolve conflicts and reach solutions that save taxpayers' money.



## Franklin Ridge Road Connection Lawsuit Appeal

An environmental lawsuit regarding the approval of the road connection from Phyllis Place in Serra Mesa to Civita in Mission Valley was filed on November 27, 2017. A 501(c)3 nonprofit Board, composed of representatives from Civita and Serra Mesa, sued to protect public safety and the quality of life in Civita and Serra Mesa.

On January 28, 2020, more than two years later, the San Diego County Superior Court ruled against the environmental lawsuit. The decision supported the City's process.

In a January 31, 2020 Union-Tribune article, *Judge Rules For S.D. In Lawsuit Over New Connector*, it was stated that the road "...would allow developers to build more commercial projects and dense housing in Mission Valley by boosting overall traffic circulation there."

Within the 60-day deadline requirement (approximately April 1) the Board will appeal the decision to the 4th District Court of Appeal. We're concerned about safety for both Civita and Serra Mesa residents. An appeal is heard by three judges and takes approximately 18 months. The brief will be filed by December and will include arguments about the inadequate preparation of environmental documents and the bias of City Councilmember Scott Sherman.\*

Unlike Sherman City Councilmember **Barbara Bry** *voted against the road connection*. She supported the safety concerns of the residents.

If this freeway connector is completed, *lives are at risk*. **A 4-lane, 55-mph freeway connector will immediately allow over 23,000 cars daily increasing to over 34,000 cars a day** through Serra Mesa and half-mile stretches of Via Alta and Franklin Ridge roads in Civita. This freeway connector will clog the only access road for many homes in Serra Mesa, creating a dangerous situation for emergency access and evacuation of that area.

**Additional funds are needed now to move this appeal forward.** Turn your concerns about the road connection into action. Donations are tax deductible. Online donation information is at <https://savecivita.com/take-action/> or checks can be addressed to Save Civita and mailed to Save Civita, PO Box 23315, San Diego, CA 92193. Thanks to all of you who have donated to this worthwhile cause!

More information: <http://www.serramesa.org/hot-topics/> (includes briefs and judge's ruling) and <https://savecivita.com/>.

\*City Councilmember Scott Sherman actively campaigned in May 2017 to obtain support from the Mission Valley condo associations; Civita associations were excluded; and the campaign began prior to meeting with the Serra Mesa Planning Group representatives. References to Sherman's role are on pages 2, 5-6, 29-30 of Plaintiff's Brief and pages 25-27 of Petitioner's Reply Brief at <http://www.serramesa.org/hot-topics/>. Sample quotes from the Plaintiff's Reply Brief, pages 29-30:

"In fact, as far back as May 2017, on at least one occasion, Mr. Sherman's staff was offering to write the support letter for a group willing to support the Project."

"Even worse, the day after the Planning Commission recommended approval of the Project on August 24, 2017, Mr. Sherman's staff sent out an e-mail stating "[t]hank you to everyone who came to the Planning

Continued to page 9

Commission Hearing yesterday and sent in letters of support! With your support we had over 40 speakers in attendance and turned in over 50 letters in support of this Community Plan Amendment.””

“Mr. Sherman’s staff then urged supporters to attend future public hearings and sign an online petition in support of the Project.” “In light of the foregoing, it is clear that by the time of the City Council’s public hearing on October 30, 2017, Mr. Sherman’s motion and vote in favor of the Project were a foregone conclusion. That his vote was already counted means the hearing failed to comport with the fair-hearing aspect of due process. Due process requires that all hearing judges be impartial.”

**Additional Background Information:** On February 26, 2013 City Councilmember Scott Sherman recused himself from a vote on a proposed senior housing project, Village at Zion, because “He had previously told members of the Allied Gardens Community Council he was likely to support the project.” His recusal was the result of following “advice from the city attorney’s office.” (Voice of San Diego article, <https://www.voiceofsandiego.org/topics/government/sherman-sits-out-housing-project-vote/>)

On April 28, 2016 Sherman’s representative sent an email to a constituent regarding the Franklin Ridge Road connection issue stating that “Since this a quasi-judicial land use item, Councilmember Sherman is unable to take a position on this issue prior to the presentation and hearing at City Council. If Councilmember Sherman were to voice an opinion before the meeting, he would have to recuse himself when this item is heard at Council.”

**Yet, in May 2017 Sherman’s office actively campaigned for the road connection. It wasn’t ok to take a position in 2016, but it was ok in 2017.**

The following information, not included in the brief, can be found at <https://savecivita.com/>:

**Inconsistency with Scott Sherman’s Concerns:** In December 2016, the long-controversial Regents Road Bridge in University City was voted down by San Diego City Council. The plan for a bridge that would attract regional traffic through a neighborhood was removed from the planning maps.

During the Council’s discussion, **Council Member Scott Sherman** said both sides in the debate made strong arguments, but that he believes the bridge could worsen congestion because smart phone apps would direct people to the new road.

*An article published in the San Diego Union Tribune on 12/5/2016 titled, “Council deletes controversial Regents Road bridge from Planning Maps” includes the following quote from Sherman, “This road connector, I think, would take congestion off the freeways and put it through the neighborhood and we’d have one more congested neighborhood and we’d have a bunch of cars and a bunch of safety vehicles not going anywhere because they are sitting in traffic.”*

This is the exact same scenario playing out in the Franklin Ridge Road area. GPS programs will indicate that cutting through the residential community of Civita and Serra Mesa is the shortest route for cars in North Park and Mission Valley to reach I-805.

**Council Member Sherman** showed great concern for the University City neighborhood and how that connector would risk safety and diminish their quality of life but **showed no concern** for his own constituents in the same situation.

---

## Housing at Old Library Site



**Old Serra Mesa Library on Sandrock & Hurlbut, 3440 Sandrock Road** – This property, .336 acres, potential 29 units, is one of the five properties that Mayor Faulconer announced in February 2020 would be made available for permanent supportive housing. As described by Voice of San Diego in an excellent guide on types of homeless and low-income housing at <https://www.voiceofsandiego.org/topics/government/what-we-mean-when-we-talk-about-housing-the-homeless/>, “These are permanent homes that typically come with onsite services and amenities such as a cafeteria, community activities and case managers who regularly check in with residents.”

The City’s Real Estate Assets Department posted a Request for Proposal (RFP). More information is at <https://www.sandiego.gov/sites/default/files/supportivehousing.pdf>. The RFP describes the lease agreement, requirements for submittal, and selection process (staff selects the proposal that is presented to the City Council for consideration). Due date is April 20, 2020.

---

## Serra Mesa Planning Group News

The Serra Mesa Planning Group (SMPG) is officially recognized by the City and makes recommendations on land use issues to the City. SMPG meets the third Thursday of the month, 7 pm, at the Serra Mesa-Kearny Mesa Library, 9505 Aero Dr. Next meetings: March 19 and April 16. To contact us, email [smpg@serramesa.org](mailto:smpg@serramesa.org).

SMPG’s bylaws allow fifteen Board members. On March 19, 2020, SMPG will conduct an annual election for board members for two-year terms. Anyone who is at least 18 years old, affiliated with the community as a property owner, resident of Serra Mesa, or a local Serra Mesa businessperson and who has attended two SMPG meetings in the last six months is eligible to be elected. The City provides training.

See <https://www.sandiego.gov/planning/community/resources>.

## SDG&E Pipeline Project in Serra Mesa

You're invited to the Serra Mesa Community Council meeting on March 25, 6:30 pm, at the Serra Mesa-Kearny Mesa Library for a presentation by Kevin O'Beirne, SDG&E Major Projects Development Manager, on SDG&E's Pipeline Safety Enhancement Plan (PSEP). PSEP is a program to upgrade and replace certain natural gas pipelines that exist in San Diego County today. Pipeline 1600 is a 50-mile pipe that was constructed in 1949 and runs from Rainbow on the San Diego-Riverside border down to Mission Valley.

Following the tragic 2010 incident in San Bruno in Northern California, state law requires certain pipelines to be tested or replaced, including Pipeline 1600. The California Public Utilities Commission (CPUC) has approved the plan to replace 37 miles in populated areas and strength test the remaining 13 miles in rural areas.

The Serra Mesa segment of the replacement project will be constructed from approximately June to November 2020. Serra Mesa is included in Section 19, which begins near the intersection of Ridgehaven Ct and Ruffin Rd. The alignment runs through Ruffin Rd., Aero Dr., Sandrock Rd., Murray Ridge Rd., Raejean Ave., Greyling Dr. and Sandmark Ave., until reaching the terminus of Line 1600 at Mission Station.

Questions and answers will follow the 10-15-minute presentation.

***MORE THAN YOU CAN SHAKE A STICK AT !***

# TUNA ♦ DOES ♦ VEGAS ♦

by Jaston Williams,  
Joe Sears, and  
Ed Howard

**Fri, Sat April 24 and 25,  
May 1 and 2, 7:30 p.m.**

Northminster Community Hall  
4324 Clairemont Mesa Blvd, San Diego, CA 92117

**Tickets online at:**

<http://clairemontactone.org/>





## VA Hospital Annex on Aero



Work has begun on 7.7 acres site at 8875 Aero Drive (former bank vault building), Kearny Mesa area. Construction includes:

- Renovation of existing building plus a 25,000-sf addition; total 139,000 sf
- Construction of 4-story 136,000 sf parking structure, 550 parking spaces
- New landscaping
- Westernmost driveway on the site will be removed



Image copied from Protea Aero Drive LLC, developer's website at <https://www.proteaproperties.com/8875aero>

The project will provide services for the U.S. Department of Veterans Affairs (VA), including: Primary Care, Mental Health, some specialty programs, Laboratory and Telehealth Care, Eye Clinic/Low Vision/Blind Rehabilitation, Audiology, Gynecology/Women's Clinic, Podiatry, Physical Therapy, Occupational Therapy and Physical Medicine and Rehabilitation, Mental Health (WAVE and CORE programs) Prosthetics, Radiology and Pharmacy dispensing (limited medications).

Project will pay for

- Construction of concrete raised median to allow left turn in and prohibit right turns along project frontage on Aero Dr
- At Aero Drive/Sandroek Road intersection
  - Northbound approach shall be restriped to provide two dedicated left-turn lanes and share thru/right-turn lane
  - Southbound approach includes replacing existing nine-foot raised median with four-foot raised median, and restripe for shared thru/right-turn lane, ten-foot painted median with chevron markings and dedicated left-turn lane.
  - Provide protected left signal phasing

More details at <http://www.serramesa.org/news-events/>.

| SERRA MESA VILLAGE MARCH 2020   |                                         |                                                                                                              |                                                                                    |                                     |     |                                       |
|---------------------------------|-----------------------------------------|--------------------------------------------------------------------------------------------------------------|------------------------------------------------------------------------------------|-------------------------------------|-----|---------------------------------------|
| ◀ February                      |                                         |                                                                                                              |                                                                                    |                                     |     | April ▶                               |
| Sun                             | Mon                                     | Tue                                                                                                          | Wed                                                                                | Thu                                 | Fri | Sat                                   |
| 1                               | 2<br>12:00 PM - SMV<br>Board Mtg HABC   | 3<br>PEACH BLOSSOM DAY                                                                                       | 4<br>11:15 AM Exercise<br>KH<br>12:00 Ceramics<br>SMRC                             | 5<br>10:00 AM - SMV<br>Trip SM/KM   | 6   | 7                                     |
| 8<br>DAYLIGHT SAVINGS<br>BEGINS | 9<br>PANIC DAY                          | 10<br>1:00 PM SMV Movie<br>HABC                                                                              | 11<br>11:15 AM Exercise<br>KH<br>12:00 Ceramics<br>SMRC                            | 12<br>PLANT A FLOWER DAY            | 13  | 14<br>NAT'L PI DAY<br>(today is 3.14) |
| 15                              | 16<br>EVERYTHING YOU DO IS<br>RIGHT DAY | 17<br>ST. PATRICK'S DAY<br> | 18<br>11:15 AM Exercise<br>KH<br>12:00 Ceramics<br>SMRC                            | 19<br>3:30 PM - SMV<br>Mtg. - SM/KM | 20  | 21<br>10:30 AM HLAA MVCF              |
| 22<br>NAT'L GOOF OFF DAY        | 23                                      | 24<br>1:00 PM SMV Movie<br>HABC                                                                              | 25<br>11:15 AM Exercise<br>KH<br>12:00 Ceramics<br>SMRC<br>6:30 PM - SMCC<br>SM/KM | 26<br>NAT'L SPINACH DAY             | 27  | 28                                    |
| 29                              | 30<br>AM IN CONTRL DAY                  | 31                                                                                                           |                                                                                    |                                     |     |                                       |

MVCF- Mission Village Christian Fellowship - 2650 Melbourne Drive    SM/KM - Serra Mesa/Kearny Mesa Library - 9005 Aero Drive

SMRC - Serra Mesa Rec Ctr - 9020 Village Glen Drive    KH - Katrina's House - 3501 Pomeroy

HABC - Holy Angela Byzantine Church - 2235 Galahad Road    VISIT THE VILLAGE AT SERRAMESAVILLAGE.ORG



## **Serra Mesa-Kearny Mesa Branch Library**

### **March/April 2020 Events/Programs**

All San Diego Public Library Locations will be Closed Wednesday, March 31st in observance of Cesar Chavez Day.

#### **Adult Programs**

**Communicating with Technology – Fridays, 1:00 p.m. - 3:00 p.m. (except 3/30)** Focused on the technologies that we use to communicate. Includes hands on learning with smartphones and tablets, as well as lecture/discussion. Topics include: The Cloud, Productivity, Operating systems, Web browsers, Google, Apple and Microsoft tools, Social networks, Photography, Online safety and more. Bring your own device for more hands-on learning. Geared towards 55+, but everyone 18+ is welcomed. Enroll anytime in the class.

#### **Piano Class: Tuesdays 11:30 a.m. – 4:00 p.m. (except 3/31)**

- **Beginner 1 Level** 11:30 a.m. – 1:30 p.m.
- **Beginner 2 Level** 1:00 p.m. – 2:30 p.m.
- **Intermediate Level** 2:30 p.m. – 4:00 p.m.

Explore your musical talent through learning the fundamentals of piano techniques. Geared towards 55+, but everyone 18+ is welcomed. Enroll anytime in the class.

**Writing Class – Tuesdays, 5:30 p.m. - 7:45 p.m. (except 3/31)** Join a community of writers (beginning-advanced level) and learn techniques for writing autobiographies, fiction, and non-fiction reports. Designed to meet the interests of older adults in writing short stories, poetry, and articles for publication or self-improvement. Course covers writing newspaper articles, outlining and writing autobiographies, fiction techniques for writing short stories and novels, and an introduction to poetry writing. Geared towards 55+, but everyone 18+ is welcomed. Enroll anytime in the class.

#### **Japanese Brush Painting – Thursdays, 12:30 p.m. – 3:30 p.m. (except 4/2)**

Learn how to create beautiful tones of Japanese sumi-ink and paint with unique Japanese brush style. Geared towards 55+, but everyone 18+ is welcomed. Enroll anytime in the class.

**AARP Tax Preparation Assistance – Fridays through April 10, 11:30 a.m. – 3:30 p.m.** The AARP will be providing free tax help for taxpayers with low to moderate income on Fridays, April 7 - April 10. Taxpayer clients may come in on any Friday and sign in on the sheet for TODAY or sign up for ONE (1) date in the future.

**Knitting Circle – Saturdays, 9:30 a.m.** Join the knitting circle. Improve your skills in this traditional art form.

**March 3, 6:00 p.m. Friends of the Library Meeting.** Join members of your community to discuss ways to support the library.

**March 4, 1:00 p.m. OASIS at the Library: Vegetable Gardening 101.** This class will provide the basics for a successful and bountiful harvest, whether in the ground or in pots. We will cover location, size, soil preparation, choosing vegetables, irrigation, harvesting, and seed saving. Whether you are just starting or already have a garden, there is always something new to learn. Handouts will be provided.

**March 10, 6:45 p.m. Serra Mesa Library Book Club.** Join members of your community to discuss *The Immortalists* by Chloe Benjamin.



Continued from page 20

**March 18, 11:30 a.m. Kearny Mesa Planning Group.** A community meeting for an organization that advises the city on land use issues.

**March 19, 3:30 p.m. Serra Mesa Village Meeting.** Join members of your community for presentations on healthy lifestyles for older adults.

**March 19, 7:00 p.m. Serra Mesa Planning Group.** A community meeting for an organization that advises the city on land use issues.

**March 25, 6:30 p.m. Serra Mesa Community Council.** A meeting to provide information and act as a forum for identifying and solving community problems.

**April 1, 1:00 p.m. OASIS at the Library: Traveling Light and Easy.** Is travel or backpacking in your future plans? Come learn how to pack lightly for a more enjoyable trip. Join traveler and Camino walker Amanda Schaffer as she offers tips on traveling light for any adventure. Discover what it means to go “ultralight” and find out how to find travel gear bargains. Examples of gear will be shown, including clothing, essentials, and eco-friendly products. A resource handout will be given that includes a sample Camino packing list. Every ounce counts!

**April 1, 6:00 p.m. Understanding Back Pain, Prevention and Management.** Attend a free health workshop, presented by Sharp HealthCare, to learn about the body mechanics that cause lower back pain, how it can be managed through physical therapy and how to prevent it from occurring.

**April 14, 6:45 p.m. Serra Mesa Library Book Club.** Join members of your community to discuss *The Feather Thief* by Kirk W. Johnson.

**April 15, 11:30 a.m. Kearny Mesa Planning Group.** A community meeting for an organization that advises the city on land use issues.

**April 16, 3:30 p.m. Serra Mesa Village Meeting.** Join members of your community for presentations on healthy lifestyles for older adults.

**April 16, 7:00 p.m. Serra Mesa Planning Group.** A community meeting for an organization that advises the city on land use issues.

### **Children Programs**

**Do Your Homework @ the Library Homework Help -Mondays and Thursdays 3:00 p.m. - 6:00 p.m., Tuesdays and Wednesdays 3:00 p.m. - 7:00 p.m. (except 3/31)** Students in Kindergarten through 8th grade can come in for free homework assistance! Bring in your homework to get assistance from one of our Homework Coaches!

**Monday Morning Storytime – Mondays, 10:00 a.m.** Join Ms. Carrie every Monday morning for stories, songs, and fun that foster early literacy skills!

**Baby/Toddler Explore Time – Fridays, 10:00 a.m.** Come let your baby or toddler learn about the world by exploring. Little ones are able to make noise, play, and meet new friends. This is a loosely structured, baby-led program of play, music, art, stories, songs and more. For babies and toddlers 0-2 years.

**Paws to Read with Love on a Leash – 2<sup>nd</sup> and 4<sup>th</sup> Mondays, 3:00 p.m.** Children can read aloud to trained and certified therapy dogs. “Paws to Read” is designed to help children improve their reading skills and confidence in reading out loud.

**March 4 & 18, 4:00 p.m. LEGO Builder Club.** Join us to build Lego creations that will be displayed in the library.



# Serra Mesa Little League

## 2020 Spring Registration

**We are looking for players of all skills and abilities!**  
**(Ages 4-14 on or before August 31, 2020)**

**We are also looking for volunteers, coaches, managers, and umpires. No experience? No problem! Training will be provided.**

| Division                                                                                                           | Age   | Cost  |
|--------------------------------------------------------------------------------------------------------------------|-------|-------|
| T-Ball*                                                                                                            | 4-6   | \$160 |
| Rookie*                                                                                                            | 5-6   | \$160 |
| Caps*                                                                                                              | 7-8   | \$180 |
| Minors*                                                                                                            | 9-10  | \$180 |
| Majors*                                                                                                            | 11-12 | \$180 |
| Juniors**                                                                                                          | 13-14 | \$160 |
| *Included in registration fee is a \$50 snack bar deposit which is refunded when 2 snack bar shifts are completed. |       |       |
| ** No deposit required.                                                                                            |       |       |
| Registration fees are NON-REFUNDABLE.                                                                              |       |       |

**Registration includes:**

**team hat, shirt, socks, belt, team picture and trophy.**

### Important Dates

|                        |         |
|------------------------|---------|
| Player Assessments     | 1/18/20 |
|                        | 1/25/20 |
| Cap Day                | 2/8/20  |
| Opening Day Ceremonies | 3/7/20  |
| Picture Day            | 3/14/20 |

**Online registration available at [www.serramesalittleleague.org](http://www.serramesalittleleague.org)**

**March 7, 1:00 p.m. Your Amazing Brain.** In this interactive workshop, students will discover how brains work by examining sheep brains, building neurons out of pipe cleaners and harnessing the power of music to make a cockroach leg dance. Using tools like those used by real neuroscientists, students will explore the anatomy of our brains and experience first-hand how our brains communicate with our senses. Program is for students 6th-8th grade. Space is limited. **Registration required.** [SanDiego.gov/LibraryNext](https://sandiego.gov/LibraryNext)

**March 11, 4:00 p.m. After School Krafternoon Craft.** Join us for a fun and free craft geared towards ages 4-10.

**March 25, 4:30 p.m. Spring into STEAM: Zovargo.** How many different animal species call the rainforest home? Millions! Grab your magnifying glass and get ready to GO WILD as you discover some of the beautiful animals that make up the rainforest. You'll also learn what we can do to help these animals that are in danger of becoming extinct! All ages welcome. Geared for ages 9-12.

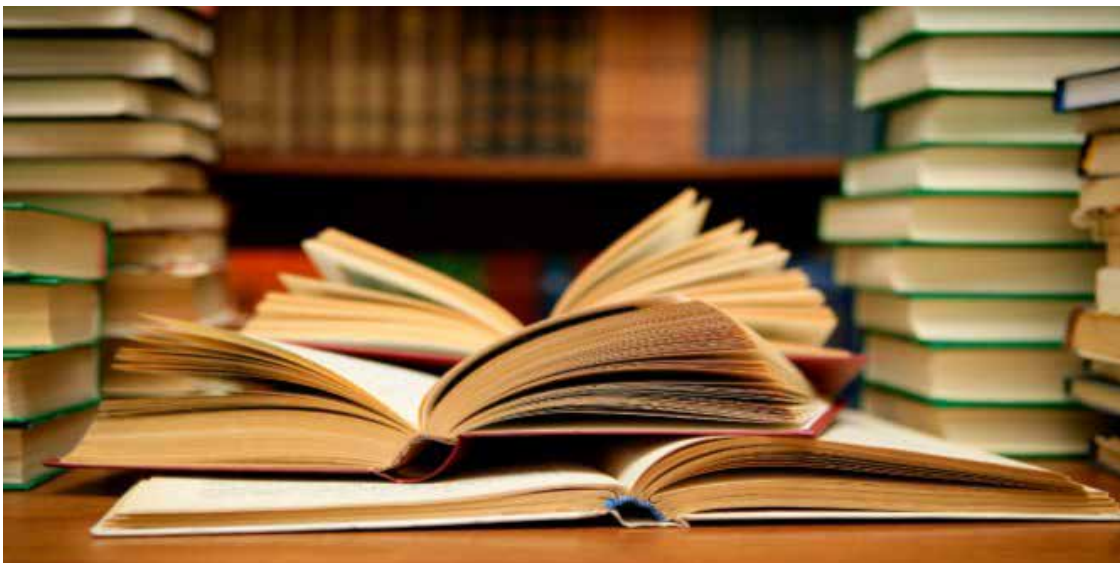
**April 1 & 15, 4:00 p.m. LEGO Builder Club.** Join us to build Lego creations that will be displayed in the library.

**April 4, 1:00 p.m. Spring into STEAM: Making a Manguaré.** Learn how the Bora-Huitoto People, one of the many tribes living on the Amazon forest, make and use their drums to communicate among themselves and between villages. Create and decorate a small drum replica and learn rhythmic patterns for music and communication purposes. Geared for ages 9-12. **Registration required.** <https://sandiego.librarymarket.com/events/making-manguare>

**April 8, 4:00 p.m. After School Krafternoon Craft.** Join us for a fun and free craft geared towards ages 4-10.

**Apply for a Free Computer!! Computers 2 Kids, Basic Computer Class for Adults at the Serra Mesa-Kearny Mesa Library – Classes on March 28 and April 25.**

The San Diego Public Library and Computers 2 Kids are teaming up to provide computers for families with children. Volunteers will guide you through an introductory computer class at the library. Attendance at this class is required before you can receive a computer. Computers 2 Kids will give you a Technology Assistance Program application. They will review it and notify you whether you qualify based on your verified income. Sign-up at the Serra Mesa-Kearny Mesa Branch Library or call 858-573-1396 starting on the 1<sup>st</sup> of each month.



## Why a Census?

The founding fathers of the Constitution of the United States chose population to be the basis for sharing political power, not wealth or land. A nationwide census is mandated per the Constitution of the United States, Article I, Section 2.

A census to count the entire population of our nation, and at the location where each person usually lives, began in 1790 and has been repeated every ten years to this date of 2020. The census asks questions of people in homes and group living situations, including how many people live or stay in each home, and the sex, age and race of each person. The goal is to count everyone once, only once, and in the right place.

## How the Census Benefits Your Community

Federal funds, grants and support to states, counties and communities are based on population totals and breakdowns by sex, age, race and other factors. Your community benefits the most when the census counts everyone. When you respond to the census, you help your community gets its fair share of nearly \$700 billion per year in federal funds spent on schools, hospitals, highways and roads, police and fire services, and other vital programs.

Businesses use census data to decide where to build factories, offices and stores, and this creates jobs. Developers use the census to build new homes and revitalize old neighborhoods. Local governments use the census for planning public services and emergency preparedness. Residents use the census to support community initiatives involving legislation, quality-of-life and consumer advocacy.

In broad terms, the census helps us see how our country is changing. For example, in the 2010 census, 308.7 million people were counted in the United States, an increase of 9.7% from the 2000 census population. The highest rates of population growth were reported in urban areas at +12.7%. Among states, Texas and Florida grew the most, while 6 states increased and other 10 states declined in representation.

## Representation

Our whole representative democracy is based on census data. The census ensures that each community gets the right number of representatives in government. Because representation is based on population, an up-to-date tally is essential.

## Privacy

Personal information like names and addresses are safeguarded and can never be released. Statistical summaries of the data for geographic areas and political units are available on the Web, but there is no way that individual households could be identified based on their responses. Confidentiality even excludes the sharing of specific Census information with other federal agencies such as the IRS, Immigration, and various law enforcement agencies. The Census Bureau conducts a background check to screen its employees and provides training to ensure that collected data is handled responsibly.





# Be A Census Taker

- ✓ Extra income
- ✓ Flexible hours
- ✓ Weekly pay
- ✓ Paid training

Apply Online  
[2020CENSUS.GOV/JOBS](https://2020CENSUS.GOV/JOBS)

**\$21.00 Hour**

For more information or help applying, please call  
 1-855-JOB-2020

Federal Relay Service: 1-800-877-8339 TTY/ASCII  
[www.gsa.gov/fedrelay](https://www.gsa.gov/fedrelay)

The U.S. Census Bureau is an Equal Opportunity Employer.

D-405 | April 2019

Shape  
 your future  
 APPLY NOW >

United States<sup>®</sup>  
**Census  
 2020**

***Serra Mesa Observer***  
Editor: *Ronda Adams*  
Post Office Box 23315  
San Diego, CA 92193

# Dated Material

